



Longhorsley Tree

The newsletter for the Parish of St Helen's
April 2024 Issue 123

Newsletter website:

sites.google.com/site/LonghorsleyTree

or tinyurl.com/LonghorsleyTree

or Google "Longhorsley Tree"

Flower Arranging in Longhorsley

I sometimes like to look back in my old diary to see what I was doing a year ago. Today, as I write this, I saw that the flower arranging classes began in the Village Hall. So I thought you might be interested in how the classes have progressed. After we had all been very busy with the Flower Festival, which celebrated the life of our new King, over the Coronation weekend, we had a break until September.

During the break I applied to the Wingates Wind Farm Trust for some financial help in setting up a Flower Club, and was very pleased when they awarded us a Grant. Over the last few months we have attracted some new members and had demonstrations from four different arrangers.

These have included how to get the very best out of supermarket flowers, how to do a tied bouquet, an advent wreath, a Christmas decoration, a Spring arrangement and one about sustainability, when no floral foam was used.

On **19th April** the demonstration will be "An introduction to Ikebana".

"Fun with Flowers" is held on the third Friday of the month in Longhorsley Village Hall from 2.30 - 4pm, and the cost is £5 per person. It's very informal and friendly, and we all support each other. So, if you would like to learn a new skill, please contact me. You will be very welcome.

Olive Light ✉ olivelight72@gmail.com or ☎ **07907 714455**

Update on South Road Housing Development

In the past weeks some clearance work has been done to create access to the South Road site. The developers are hoping to be able to start building some time this summer.

The **Longhorsley Tree** is edited and delivered by a team of volunteers organised by St Helen's Church. We are indebted to Longhorsley Parish Council for funding the publication.

Longhorsley Parish Council

The next Parish Council meeting will be held on Wednesday, **10th April**, in the Village Hall, starting at 7pm, with a parishioner slot at 8pm.

Meeting notices are displayed on village notice boards, with minutes and other information found on the Parish Council website at:

northumberlandparishes.uk/longhorsley

Contact details for the current members are detailed below:

Clerk: Gillian Turner, 4 Lowther Close, Seaton Manor, Ashington, NE63 0HY

☎ **01670 812704** or ✉ parishclerk@longhorsley-pc.gov.uk

Chairman: Norman Douglas ☎ **07485 174529**

✉ norman.douglas@longhorsley-pc.gov.uk

Councillors: Sarah Alcock, Kirsty Bell, Peter Boyle, Jennie Parker, Anne Peat and Trevor Potts.

Important Date for your Diary!

Every English Parish, by law, must hold an Annual Parish Meeting/ Assembly, which is a relatively informal event for the whole community.

This is an opportunity for the Parish Council to report to its electorate what it has accomplished in the preceding year. It is also an opportunity for residents to ask questions and provide feedback to the Council.

The Longhorsley Annual Parish Assembly will take place on Wednesday **22nd May** at 6.30pm in the Village Hall – this is your chance to air your views or indeed to raise any issues. All are welcome.

Forthcoming Elections

Residents are reminded about the recent changes introduced regarding the need to bring photo ID to vote at a polling station. The following items can be used:

- A valid Passport
- Driving Licence
- Blue Badge
- Bus Pass
- Identity Card

Please remember that without valid photo ID you will **NOT** be able to vote.

Church View Play Area

The official opening of the refurbished play area took place on 15th March. The opening was undertaken by our Chairman, Cllr Norman Douglas, with representatives from Wicksteed also in attendance. Children from Longhorsley Explorers had a great time and each child received a Wicksteed goody-bag together with some fresh fruit.



The Chairman thanked the contractors for being able to carry out the works within the given timescales despite the dreadful weather.

Your County Councillor

I'm hoping the police will agree to placing the camera van in the village. There is a meeting between our highways staff and the relevant officers before Easter. I'll keep you posted on progress on this.

As always please let me know if I can help with anything.

Glen Sanderson 07730 979737 glen.sanderson@northumberland.gov.uk

Obituary - Muriel Florentine

Muriel Florentine, a previous resident of the village, who set up the Art Group and did the artwork for the Millennium Wall hanging in the village hall, passed away on Monday 18th March. Our thoughts are with her family.

Penny Ford

X14 Bus Times Effective From Sunday 24th March

There are no changes to the Longhorsley bus times. However a number of existing services will now also stop at Cragside. The updated timetable is shown below, with services stopping at Cragside in **green**. All times are from Longhorsley Green.

To Morpeth and Newcastle											Not to NCL				
M-F	7.08	8.08	9.23	10.23	11.23	12.23	13.23	14.23	15.23		16.33	17.33	18.38	19.38	
Sat		8.23	9.23	10.23	11.23	12.23	13.23	14.23	15.23		16.28	17.38	18.33	19.33	
Sun				10.48		12.48		14.48			16.48		18.48		
To Rothbury and Thropton											To L'fram only				
M-F	7.00		9.15	10.15	11.15	12.15	13.15	14.15		16.00	16.25	17.35	18.35	19.30	
Sat			9.15	10.15	11.15	12.15	13.15	14.15	15.15		16.20	17.25	18.25	19.30	
Sun			9.35		11.40		13.40		15.40			17.40			

Longhorsley Village Hall Sweepstake - March Winners

1st Prize	£50	David Wood	3rd Prize	£15	Val Douglas
2nd Prize	£25	Stephen Cochrane	4th Prize	£10	Tim Fish

There are still some spare numbers left in the sweepstake. If you would like to take part, or even take out another number, then please get in touch with **Garry** or **Janice Ritchie** ☎ **07713 583311** ✉ garry7256@aol.com

May Edition - The last date for submissions is **20th April**.

Jan and Sheena Haveman 07834 740649 longhorsley.tree@gmail.com

GROUP ACTIVITIES

Toddlers' Group		Every Thu	9.15am-11am	L'horsley V Hall	Term-time	Joanna Reilly 07739 321737
Mission Baby & Toddler Group		Every Tue	9.30am-11.30am	Mission	Term-time	Win Pagan 788263
Bible Club		Every Fri	3.15pm-4.30pm	Mission	Term-time	Ian Neilly 01670 518202
Longhorsley Explorers		Every Mon-Thu	7.30am-6pm	L'horsley V Hall	Term-time	07522 486910 07522 486953
		Every Fri	7.30am-1.30pm			
Junior Football Club	U8's	Every Mon	6pm-7pm	MUGA	Oct-Apr Note: May-Sep on the Common	Steven Dick 07803 026786 Ben McMorrow 07970 840587 Andrew Archibald 07810 115152
	U6's		5pm-6pm			
	U9's		6pm-7pm			
	U12's Giras		7pm-8pm			
	U7's	Every Wed	5pm-6pm			
	U11's		6pm-7pm			
	U13's		7pm-8pm			
	U8's	Every Thu	5pm-6pm			
	U12's Zebs		6pm-7pm			
U14's	7pm-8pm					
Longhorsley Carpet Bowls		Every Mon	7pm-9pm	L'horsley V Hall	Sept-June	Olive Light 07907 714455
Wingates Carpet Bowls		Every Wed	7.30pm	Wingates V I Hall	Oct-Mar	Heather 01670 778413
Wingates Bridge Club		Every Tue	7.30pm-9.30pm	Wingates V I Hall		Robert Famelton 01669 620512
Wingates Reading Group		2nd Thu	7.30pm	WG/NW V Halls		
Embroidery Group		1st Fri	2pm	L'horsley V Hall	5th Apr	Val Douglas 788338
Art Group		2nd, 4th Fri	2pm-4pm	L'horsley V Hall	12th Apr 26th Apr	Val Douglas 788338
Local History Society		2nd Tue alt months	7.30pm	L'horsley V Hall	14th May	Derek Knox 788329
St Helen's Coffee Morning		1st Sat	10am	St Helen's Church	6th Apr	Mary Stephenson 788232
Wildlife Trust		1st Mon	7.30pm	Jubilee Rothbury	8th Apr	Conrad Chilvers 788351
Longhorsley WI		1st Thu	7.30pm	L'horsley V Hall	4th Apr	Audrey Wiggins 788692

Women Together	Every Thu	10.45am-12pm	Mission		Win Pagan 788263
Christian Vision for Men	Last Sat	8.30am	Anglers Arms	27th Apr	Jim Cockburn 510130
Walking Group	1st Mon 3rd Thu	10am	Start of walk	See below	Jan & Sheena 07801 005634
Keep Fit Class	Every Mon	9.15am-10.15am	L'horsley V Hall	NOT 1st April	Mary Stephenson 788232
Adult 5-a-side	Every Sun	6.30-7pm	MUGA or Common		Steven Bates 07793 888 311
Ladies Lunch Group	Every Month	Lunch time	Varies	23rd Apr	Frances Murphy 07909 992046
Warm Space	Every Wed	10am-12pm	L'horsley V Hall		Jane Pringle 07729 182511

St. Helen's Coffee Morning

Our next Coffee Morning will be held on Saturday **6th April** at 10am in St. Helen's Church. There will be raffle and stall as usual. All are welcome.

Mary Stephenson ☎ **788232**



Walking Group

The walks are usually 4 to 6 miles long and it's a good idea to bring a drink and energy snack on the walk. Our first walk in March was one of the few days with glorious sunshine. We had a nice walk along the beach at Longhoughton, followed by lunch in the Running Fox



The next upcoming walks are:

Thursday **18th April**: Wooler, led by Leigh and Neil ☎ **787115**

Monday **6th May**: Ponteland, led by Estelle ☎ **07803 137279**

New walkers are always welcome. For more information please contact **Sheena & Jan** ☎ **07801 005634**

Keep Fit Class

We continue to exercise in the Village Hall on Monday mornings, between 9.15 and 10.15am. Our aim is to have fun while exercising and new members are most welcome.

Please note we will **not** meet on Easter Monday 1st April.

Shirley Forster is our Instructor and sessions are in conjunction with Age UK.

Mary Stephenson ☎ **788232**

GROUP ACTIVITIES

Ladies Lunch Group

The April Ladies Lunch will be at the Northumberland Arms on the **23rd April** at 12.30pm. Could those intending to come please let me know at ✉ francesmurphy48@gmail.com, and copy to ✉ olivelight72@gmail.com

Christian Vision for Men

The Christian Vision for Men group has monthly breakfasts at the Angler's Arms. Our next breakfast will be on Saturday **27th April** at 8.30am. Our speaker that morning will be Rob Parson, who is pastor of Wooler Evangelical Church. His title is "Being a Country Parson". The charge for those attending the breakfast is £11 (cash only).

For more information and to book a place, please contact

Jim Cockburn on ☎ **01670 510130** or ✉ jim.cockburn@btinternet.com

Longhorsley WI

Sophie Kirkup, from Todburn Soaps, was the delightful speaker we had at last month's meeting. Her talk about her goats, and the variety of products she now produces, was very much enjoyed by all.

Our next meeting on Thursday **4th April** will be a Members Table Top Games night.

For any information about joining or visiting please contact:

Audrey Wiggins, Secretary ☎ **788692** or ✉ swigginsa@btinternet.com

Longhorsley Local History Society

The group had a very successful and enjoyable meeting on Tuesday 12th March. We tried a new café style format for seating and offered teas and coffees from 7pm. Our speaker was Martin Light, a local historian who gave a very interesting and informative talk on the Sharp family. Originally from Rothbury and of humble origins, members of the family rose to positions of prominence and always worked for the good of society.

Our next talk will be on Tuesday **14th May**, 7pm for 7.30pm, refreshments available. Our speaker is Jen Teulon on the History of the Howick Bathing House.

All welcome, admission free, meetings held in the Village Hall.

Penny Ford

Wingates Carpet Bowls Club

The bowls club has now finished for the Summer.

GROUP ACTIVITIES

Northumberland Wildlife Trust - Coquetdale Group

We meet on the first Monday of each month from September to April at the Jubilee Hall, Rothbury. Outings/visits are organised in the summer months. Guests are very welcome and a fee of £5 is charged. Doors open at 7pm with tea and coffee available for a small donation.

8th April at 7.30pm: AGM and Members' Talks. This is the final meeting of this season.

Contact **Conrad Chilvers** ☎ **788351**

Longhorsley Junior Football Club

Longhorsley Juniors are nearing the end of the season for some teams, but with all the rain there are a few teams that have quite a few games still to play. Training for some teams will move to the Common from the MUGA in the next few weeks, dependent on the weather and pitch condition.

The club are looking for new players for an U6 team for next season.

Anyone with kids keen to play please contact **Andrew** ☎ **07810 115152** or **Freya** ☎ **07841 536797**. Any parents who are interested in coaching the team please contact the same numbers.

Wingates Bridge Club



We are playing Bridge in Wingates Village Hall on Tuesday nights from 7.30 - 9.30pm.

We are a relaxed social group, you do not have to have a partner, or have played before. We have some new starters at the moment, so if you have ever fancied learning the game then now is a good opportunity.

All are welcome, just turn up any Tuesday at 7.30pm or contact **Robert Famelton** on ☎ **01669 620512** or ✉ robertfamelton@gmail.com

What a Wonderful World 'My Northumberland' Photography Exhibition 3 June - 4 July Alnwick Playhouse

What is your favourite place in Northumberland?

How do we ensure its future?

Submit your images and words to **What A Wonderful World** for inclusion in the 'My Northumberland' Exhibition and 2025 Calendar.

Full details at: whataww.org - entries close 12th April

LOCAL EVENTS



Easter Fun Day

Tuesday 2nd April, 12 - 3pm

Northburn Sports and Community Centre, Cramlington
Egg hunt, inflatables, sports, crafts, face painting, raffle,
chocolate tombola and more!!!

Entry £5 (additional £2 for face painting)

Raising money for Seb and Olivia's Den

Chocolate donations or raffle prizes welcome, can be left with
Louise at Dawn Cottage, opposite the speed camera

Ceilidh in Longhorsley Village Hall

Saturday 18th May, 7pm for 7.30pm

Pooled Supper, BYOB

Adults £5, Children Free

Future Events in the Village Hall

Saturday 7th September: Music Night with Andy Craig

Saturday 12th October: Car Boot / Table Top Sale

There will also be another Wine Tasting Evening later in the year

The Northumbrian Language Society

Saturday 27th April: Reed Neet

The society's equivalent of a Burns' Night, the annual commemoration of
its founder, the celebrated local dialect poet Fred Reed,
will be held at the Waterford Lodge, Morpeth.

Join us for a pie and pea supper with a fun evening of entertainment.

Tickets, to be booked in advance, cost £12, available from
the Chairman on ☎ 01668 281462 ✉ iamnltreasurer@gmail.com

For your diary

Longhorsley Flower Festival 'Celebrating Longhorsley'

Saturday 25th May - Monday 27th May
Preview evening Friday 24th May at 6pm

St. Helen's Church



LOCAL EVENTS

 and Wingates Village Institute Hall present	
Mon 25th March to 10th June	Forever Yung Dance. Next block of line dance classes (ballroom & latin). Details from secretarywvi@rothbury.net
Sat 13th April 10am	Heritage Coffee Morning. Display about history of the village hall and other local history. If you are interested in a family history class please contact Julie Famelton (see below)
	Out of the Box - Sun 26th May, 3pm (Highlights) Award winning performer Darryl J Carrington offers world-class juggling, magic, implausible tricks and a constant battle with physics without a word being spoken. It's like Mr. Bean with tricks - a Family-friendly act. Tickets: Adult £8, Child £6, Family £24 (see below)
Thu 13th June 7.30pm	Rum Ragged (Highlights) Newfoundland folk music. Tickets: Adult £12, Child £6 (see below)
Info and bookings from: ✉ famelton@rothbury.net , ☎ 01669 620512 and also online (for a small extra fee) from 🌐 www.highlightsnorth.co.uk	

<h3 style="color: #0070C0;">Netherwitton Village Hall</h3>	
Fri 5th April 7pm-11pm	Pub night. The regular monthly social evening providing the opportunity to mix and socialise with your neighbours.
Sat 13th April 10.30am-noon	Spring Brunch. Selection of brunch food and drinks will be available to buy.
Fri 26th April 10am-1pm	Crafty Friday. Bring your own crafts to work on and enjoy a coffee and a chat.
Contact: Peter Pacepavicius ☎ 07785 577466 or see Netherwitton Village Hall Facebook page.	

	  Morpeth Northumbrian Gathering
<p>Friday 5th April - Sunday 7th April</p> <p>Festival of Northumberland's music and traditions with concerts, workshops, competitions, stories, barn dance, crafts exhibition, street shows, market and procession.</p>	

LOCAL EVENTS



Sunday **7th April**, 10am-4pm
Linden Hall

Selection of local artisan stalls,
refreshments available to purchase
Tickets £3.50 inc a drink, purchase
on the day or scan the QR code



TAKEAWAY FOOD IN LONGHORSLEY

The Shoulder of Mutton is open and offering takeaways every day
Sunday lunches 12 - 6pm ~ Monday to Saturday 5 - 8pm
See their menu at [🌐 shoulderofmuttonpub.com](https://www.shoulderofmuttonpub.com) ~ phone 788236 to order

The Flying Fryer every **Friday** from 4pm - 7pm, or later.
Facebook [The Flying Fryer](#) 📞 07984 426 725

Dou_h&co the first **Thursday** in the month from 4.30pm - 7.30pm
The next visit date is **4th April**.
Pre-order on 📞 07507 834 628 from Monday 9am.
See their menu on [🌐 dou-h.co.uk](https://www.dou-h.co.uk), Instagram or Facebook [Dou_h & Co.](#)

Newspapers for Hedgehogs

Thank you very much to everyone who has responded so generously, over the last few months, to my request for newspapers for bedding for the hedgehogs at the Northumbrian Hedgehog Rescue Centre. It is so kind of you to regularly bring bags of newspapers to our house, particularly through the bad weather!

I now have a good supply of papers in reserve and do not require any more at present - thank you. As the year progresses, we may well need more papers and I will put another request out!

Please can I also ask, now we are all trying to get into our gardens to start work this spring and summer, that extra care is taken when using trimmers, lawn mowers, leaf blowers and putting up netting - that hedgehogs are not in the undergrowth. Some of the hedgehogs we get into the centre have had serious injuries caused by these items.

If you would like to find out more about how to encourage hedgehogs into your gardens and how to help their declining numbers, there is excellent information on the Northumbrian Hedgehog Rescue Trust website.

With very many thanks for all your continued help and support, **Jan Bryce**



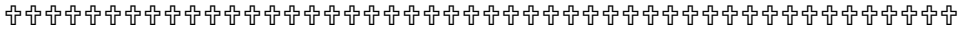
St Helen's Church

Sunday Service:

10am Holy Communion
(1st and 3rd Sundays)

10am Morning Prayer
(2nd, 4th and 5th Sundays)

Everyone is welcome.

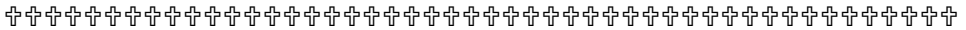


St Helen's Annual General Meeting

Sunday **14th April** - Morning Prayer service 10am, followed at 10.45am by AGM in Church.

PCC Meeting

The next meeting of the PCC is on Wednesday **15th May** at 7.00pm in St Helen's Meeting Room.



St Helen's Contact Details

During the Interregnum the Area Dean will be responsible for the Parish.
Rev. Chris Grocock ☎ **01670 813358** 🌐 www.achurchnearyou.com

Longhorsley Swift Project Update

After a not very swift start, the Longhorsley Swift Project is up and running. After gaining funding last year to build a host of boxes, summer and autumn were filled with construction on a local farm. Since then we have been doing our best to get some of the boxes up. As of mid March we have around 20 boxes up on houses around the village, with plenty more to go.



Unfortunately we are a very small team, working on a purely voluntary basis around full time jobs, so apologies to those still waiting for boxes but we are working around the village and hoping to get to everyone who has signed up before too long!

The swifts are due to start arriving in the village at the end of April, and birds will be using the rest of the summer to identify nesting sites for next year.

If you have any questions about the project, or swifts, feel free to contact the project at ✉ longhorsleyswifts@gmail.com - **Richard**.



St Thomas Catholic Church

Every Monday and Thursday - Mass at 12noon

Every Sunday - Mass at 11.15am

✉ longhorsley.stthomas@rcdhn.org.uk
🌐 www.stthomaslonghorsley.com

Thought for the Month - Getting Wise



Something came into view for me this Lent which I wanted to share – how can I be wiser? At St Helen's we've run a five week Lent course using the film *Chocolat* which helped us to discuss, ponder, reflect, and share. The film from 2000 is about a French woman, Vianne, and her young daughter, Anouk, who open up a chocolate shop in a small remote village that shakes up the rigid morality of the community. Some interesting scenes as well as themes emerged. Also worthy of note is that we enjoyed the hot chocolate, sweets and biscuits! The third week has stuck with me about 'Getting Wise'. Wisdom, from a Christian perspective, encompasses more than mere intellectual knowledge. It extends to the moral and spiritual side of our lives. We can ask God for wisdom and have the Bible to help us consider what is true, right, and lasting. Reflecting on what is good for us, for others, and honours God. This can't be a bad thing?

In week 3, the themes of, power and control exerted by a number of the characters in the film emerged. One of the obvious situations where unhealthy power and control were being used was the mayor, Comte de Reynaud over his parishioners. Interestingly there was a back story as to why he behaved the way he did – no time to explore here. Vianne arguably was wise in some ways; she saw the destruction his power and control had on others. What I found useful was thinking about situations we had faced or encountered. Where something is not quite right and what did we do about it or on reflection should have done about it?

We read verses from the Bible to see what Jesus did. Jesus had numerous disagreements with the religious authorities of his day; he challenged power imbalances and the way people treated each other. As the film drew to a close there had been some good changes for many of the characters. It wasn't a fairy tale ending but I believe people had found wisdom and had done what was truly right and lasting.

Diane Armstrong, St Helen's



Longhorsley Mission Free Church

Sunday Services:

- 11am Family Service and creche
- 5.30pm Prayer in the Mission Hall
- 6pm Evening Worship / Bible Study

For our other group meetings, please see the Group Activities sections. Visitors are always very welcome to all our events.

Contact **Ian Pagan** ☎ **788263** ✉ idpagan@btinternet.com

Website: www.longhorsleymission.org.uk

Mobile Library Visiting Times

The Mobile Library visits Longhorsley once a month, on Fridays between 3pm and 4pm, in the Village Hall car park. The next visits will be on **5th April** and **3rd** and **31st May**.

Post Office in Longhorsley Village Hall

Mon 9.15am-12.15pm ~ Fri 11.30am-1.30pm

Please note that this Outreach Service cannot accept large parcels.

THANKS

St Helen's Coffee Morning

Thank you to all who donated items for the raffle and stall, and all who supported the Coffee Morning on the 2nd March.

We raised £58.50 for St. Helen's Church.

Mary Stephenson ☎ **788232**

Coffee Morning in Memory of Kate Foreman

Thank you very much to everyone who attended, donated, provided cakes and raffle prizes. A lovely morning was had by all, with the sheer number of attendees being a reflection of the level of admiration and respect held for Kate by the community.

A total of £520 was raised, which was divided equally between Cancer Research UK and Great North Air Ambulance.

Val Douglas



FREE to good home

Wooden frame children's 2 seat garden swing.
One seat easily converts from baby to child seat.
For more info please contact ☎ **01670 788547**.

SUPPORT LOCAL BUSINESS



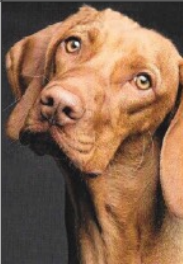
Atom Intruder Alarms

**Commercial & Domestic Security Systems
Alarm and CCTV
Installation & Maintenance**

For a free, no obligation quote contact

Mark Ingram ☎ 0191 4283404

☎ 07860 471000 ✉ mark@atomalarms.co.uk



Helen's House and Pet Sitting

Friendly Tailored Service - Local - Professional

Experienced and reliable pet and house sitter
Also able to help with horses, ponies and smallholdings
Fully insured with references available

☎ **07940 809725** ✉ helen.e.arco@gmail.com



**A WARM WELCOME IN THE HEART
OF NORTHUMBERLAND**

Open daily from 12 noon
Sunday Lunch 12noon - 5pm

The Linden Tree Pub, Linden Hall Hotel, Golf & Spa,
Longhorsley, Morpeth, Northumberland, NE65 8XF
01670 500 000 | lindentreepub.com

SUPPORT LOCAL BUSINESS



Serving good food to eat-in or take-out

Monday to Thursday: 12-3pm and 5-8pm
Friday/Saturday: 12-9pm and Sunday: 12-6pm

 www.shoulderofmuttonpub.com

 The Shoulder of Mutton

LONGSTAFF TREE SURGERY

Ian Longstaff, Rothbury, Northumberland

FREE SURVEY & QUOTES – COMPETITIVE PRICES

 07528 744 011 or 01669 504 060

 ilongstaff2002@gmail.com

 Longstaff Tree Surgery

 www.LongstaffTreeSurgery.com



NORTHUMBERLAND PEST CONTROL

NORTHUMBERLAND PEST CONTROL

Fully licensed and insured pest and vermin control.
Moles, rodents, rabbits, wasps and other insects.

Residential / Agricultural / Estate / Commercial

Contact Rory Brotherton  788174 or 07769 176666

 info@northumberlandpestcontrol.co.uk

 www.northumberlandpestcontrol.co.uk and facebook



Enquiry form 

Expert travel guidance
Personal caring service
ATOL & 100% financial
protection

Emma Rutherford

Your local independent travel agent

01670 720022

emma.rutherford@mytc.com

 @emmarutherfordtravelcounsellor

 @emmastravelescapes



SUPPORT LOCAL BUSINESS



STEPHENSONS GARAGE



Servicing & Repair
Tyres, Batteries & Exhausts
We only use approved parts
Trustworthy, high quality work

Office ☎ 01670 788611

Mobile ☎ 07710 829437

✉ stephensonsgarage@gmail.com

GreenThumb
LAWN TREATMENT SERVICE



Green Thumb

The leading lawn care specialists in the UK.
We offer a free, no obligation, lawn analysis
to assess your lawn's condition.

Prices from just £15 per treatment

Call us now on ☎ **0191 488 6202**

✉ newcastle@greenthumb.co.uk

It's a good time to review your Will



Since you made a Will have you:
Got new family members?
Got married, or lost someone?
What if your partner leaves it to
their own kids when you pass?

**PROTECT
your loved
ones - it's
easy**

**Northland Wills
Trusts & Probate
01670 788200**

FREE safe consultations in
your home OR over Zoom

**Specialists in Wills, Trusts,
Probate & Powers of Attorney**



AFR

Morpeth Carpet Cleaning

Carpet Cleaning ~ Upholstery Cleaning
Stain Removal & Protection ~ Free Estimates

**Professional Carpet & Upholstery Cleaning | Newgate Street, Morpeth
Call Simon on 07506622680 or email info@ufr-carpetcleaning.co.uk**