



Longhorsley Tree

The newsletter for the Parish of St Helen's
May 2024 Issue 124

Newsletter website:
sites.google.com/site/LonghorsleyTree
or tinyurl.com/LonghorsleyTree
or Google "Longhorsley Tree"

Longhorsley Village Fete - Saturday 13th July

We are pleased to be able to announce that Longhorsley Village Fete will be held on the above date at the Village Hall.

We hope to make it a wonderful afternoon to celebrate village life, to include all ages and generally have a great time.

If you would like to come along and be involved, our next organising committee meeting is on Monday **29th April** at 7.00pm in the Village Hall. We are a small and very friendly group, and we'd love to see you.

If you can't come, but have any ideas or thoughts that you'd like to see at the fete, then please email myself at janepringle125@gmail.com.

Thank you so much,

Longhorsley Village Fete Committee



Defibrillator at Longhorsley Village Hall

The defibrillator at the Village Hall is **not working** at the time of writing of this Tree. It is hoped that it will be repaired in the coming weeks. There is also a defibrillator available at The Shoulder of Mutton.

We will report any updates on the Tree website and by Breaking News.

June Edition - The last date for submissions is **20th May**.
Jan and Sheena Haveman 07834 740649 longhorsley.tree@gmail.com

The **Longhorsley Tree** is edited and delivered by a team of volunteers organised by St Helen's Church. We are indebted to Longhorsley Parish Council for funding the publication.

Longhorsley Parish Council

The Annual Parish Council meeting will be held on Wednesday, **8th May**, in the Village Hall, starting at 7pm, with a parishioner slot at 8pm.

Meeting notices are displayed on village notice boards, with minutes and other information found on the Parish Council website at:

northumberlandparishes.uk/longhorsley

Contact details for the current members are detailed below:

Clerk: Gillian Turner, 4 Lowther Close, Seaton Manor, Ashington, NE63 0HY

☎ **01670 812704** or ✉ parishclerk@longhorsley-pc.gov.uk

Chairman: Norman Douglas ☎ **07485 174529**

✉ norman.douglas@longhorsley-pc.gov.uk

Councillors: Sarah Alcock, Kirsty Bell, Peter Boyle, Jennie Parker, Anne Peat and Trevor Potts.

D-Day Anniversary 6th June 2024

Commemorating the Largest Naval, Air and Land Operation in History

We are pleased to announce that Longhorsley has been added to the list of authorities taking part in the official ***Beacon and Lamp Lights of Peace Lighting Ceremony*** to be held on **6th June**. We will be holding our ceremony on the Village Green with the Beacon being lit at 9.15pm. We will also be joining the Nation's Tribute at that time.

Please come along and join us in remembering those who gave their lives at home and abroad during the D-Day landings, whose sacrifice enables us all to enjoy the peace and freedom we have today.

Important Date for your Diary!

Every English Parish, by law, must hold an Annual Parish Meeting/ Assembly, which is a relatively informal event for the whole community.

This is an opportunity for the Parish Council to report to its electorate what it has accomplished in the preceding year. It is also an opportunity for residents to ask questions and provide feedback to the Council.

The Longhorsley Annual Parish Assembly will take place on Wednesday **22nd May** at 6.30pm in the Village Hall – this is your chance to air your views or indeed to raise any issues. All are welcome.

Forthcoming Elections on 2nd May

Residents are reminded about the recent changes introduced regarding the need to bring photo ID to vote at a polling station. The following items can be used:

- A valid Passport
- Driving Licence
- Blue Badge
- Bus Pass
- Identity Card

Please remember that without valid photo ID you will **NOT** be able to vote.

Litter around the Village

During the recently held Litter-Pick event, it was noted that litter and dog poo bags are being left in inappropriate places around the Village, making it look untidy and unkempt. Can we please remind you to use the litter bins provided or to take your litter home?

Your County Councillor

This winter, which doesn't seem to want to end, has been the wettest I am told since 1865. The effects on farmland and on our roads are very clear and, like other County Councils in England, we have had not just large flooding issues but now the job of fixing the damage caused.

We have put more money into the job - £36 million this year - and we will do our very best to get things sorted as soon as we can.

Please report any potholes on FixmyStreet on the website or you can just drop me a line and I will put them into the system. Give us a bit of time but we will get there!!

Glen Sanderson 07730 979737 glen.sanderson@northumberland.gov.uk

Be Aware of Ticket Fraud

Action Fraud has launched a ticket fraud awareness campaign, warning people to be alert to fraudsters trying to catch out people planning for popular and sold-out events. They recommend to only buy tickets from the venue's box office, the promoter, an official agent or a reputable ticket exchange site. Avoid paying for tickets by bank transfer, especially if buying from someone unknown. Credit card or payment services such as PayPal give you a better chance of recovering the money if you become a victim of fraud. For more information see www.actionfraud.police.uk/ticketfraud

Thefts from Vehicles in Morpeth

There have been reports of thefts from unlocked motor vehicles during the night in Morpeth. Police urge everyone not to leave money or items on display and to make sure that your vehicle is always locked and secure.

Longhorsley Village Hall Sweepstake - April Winners

1st Prize	£50	Eileen Yeoman	3rd Prize	£15	Ms Lucker
2nd Prize	£25	Penny Ford	4th Prize	£10	M & M Mosdale

There are still some spare numbers left in the sweepstake. If you would like to take part, or even take out another number, then please get in touch with **Garry** or **Janice Ritchie** ☎ **07713 583311** ✉ garry7256@aol.com

Great North Air Ambulance Service (GNAAS)

Following the success last year of the Flower Festival in St Helen's, Longhorsley, it has been decided to follow this in 2024 by supporting the GNAAS with another Festival.

The Air Ambulance operates every day of the week when called for during daylight hours. Their work following incidents on the roads is well known, but over twice as many call-outs come because of cardiac arrest. Falls and assaults are also among the reasons why the air ambulance or the rapid response vehicle are called out.



Sandra, a member of 'Fun with Flowers', told me that the Great North Air Ambulance Service has a special place in her heart as they came to the aid of her daughter, Lynne, and granddaughter, on Good Friday 8 years ago when they were caught up in a horrific fire in an area near Rothbury. What was supposed to be a lovely walk in the hills surrounding Rothbury turned out to be something catastrophic.

Running the service is expensive and needs our support. You can enjoy the Flower Festival at the same time as supporting this worthy cause.

Olive Light

Find your Voice with Sing Morpeth Choir!

Do you enjoy music? Do you love to sing? Would you like to be part of a well-established Choir? Sing Morpeth Choir is keen to add to their membership and are inviting men and women to find their voice and join us. We are particularly looking to increase our lower voice lines, tenors, and basses but all singing lines are welcome. Being able to read music is NOT necessary and there are no auditions.



The Choir rehearses each Wednesday morning at the New Life Church, 24 Dacre Street Morpeth, during term time from 10.30 to 12.00 and we cover a wide range of music. The first taster session is free and £5 per session after that. So, if you want have fun, make new friends whilst doing something that you really enjoy then come and sing with us!

If you feel you would like to "give it a go", we would be delighted to see you.

Email: singmorpethchoir@gmail.com You can also visit our website at www.singmorpethchoir.co.uk You can also follow us on Facebook at Sing Morpeth Choir.

GROUP ACTIVITIES

Toddlers' Group		Every Thu	9.15am-11am	L'horsley V Hall	Term-time	Joanna Reilly 07739 321737
Mission Baby & Toddler Group		Every Tue	9.30am-11.30am	Mission	Term-time	Win Pagan 788263
Bible Club		Every Fri	3.15pm-4.30pm	Mission	Term-time	Ian Neilly 01670 518202
Longhorsley Explorers		Every Mon-Thu	7.30am-6pm	L'horsley V Hall	Term-time	07522 486910 07522 486953
		Every Fri	7.30am-1.30pm			
Junior Football Club	U8's	Every Tue	6pm-7pm	MUGA	Oct-Apr Note: May-Sep on the Common	Steven Dick 07803 026786 Ben McMorrow 07970 840587 Andrew Archibald 07810 115152
	U6's		5pm-6pm			
	U9's		6pm-7pm			
	U12's Giras		7pm-8pm			
	U7's	Every Wed	5pm-6pm			
	U11's		6pm-7pm			
	U13's		7pm-8pm			
	U8's	Every Thu	5pm-6pm			
	U12's Zebs		6pm-7pm			
U14's	7pm-8pm					
Longhorsley Carpet Bowls		Every Mon	7pm-9pm	L'horsley V Hall	Sept-June	Olive Light 07907 714455
Wingates Carpet Bowls		Every Wed	7.30pm	Wingates V I Hall	Oct-Mar	Heather 01670 778413
Wingates Bridge Club		Every Tue	7.30pm-9.30pm	Wingates V I Hall		Robert Famelton 01669 620512
Wingates Reading Group		2nd Thu	7.30pm	WG/NW V Halls		
Embroidery Group		1st Fri	2pm	L'horsley V Hall	3rd May	Val Douglas 07483 233074
Art Group		2nd, 4th Fri	2pm-4pm	L'horsley V Hall	10th May 24th May	Val Douglas 07483 233074
Local History Society		2nd Tue alt months	7.30pm	L'horsley V Hall	14th May	Derek Knox 788329
St Helen's Coffee Morning		1st Sat	10am	St Helen's Church	4th May	Mary Stephenson 788232
Wildlife Trust		1st Mon	7.30pm	Jubilee Rothbury	Sept-April	Conrad Chilvers 788351
Longhorsley WI		1st Thu	7.30pm	L'horsley V Hall	2nd May	Audrey Wiggins 788692

Women Together	Every Thu	10.45am-12pm	Mission		Win Pagan 788263
Christian Vision for Men	Last Sat	8.30am	Anglers Arms	25th May	Jim Cockburn 510130
Walking Group	1st Mon 3rd Thu	10am	Start of walk	See below	Jan & Sheena 07801 005634
Keep Fit Class	Every Mon	9.15am-10.15am	L'horsley V Hall	NOT 6 & 27th May	Mary Stephenson 788232
Adult 5-a-side	Every Sun	6.30-7pm	MUGA or Common		Steven Bates 07793 888 311
Ladies Lunch Group	Every Month	Lunch time	Varies	15th May	Frances Murphy 07909 992046
Warm Space	Every Wed	10am-12pm	L'horsley V Hall		Jane Pringle 07729 182511

Keep Fit Class

We continue to exercise in the Village Hall on Monday mornings, between 9.15 and 10.15am. Our aim is to have fun while exercising and new members are most welcome.

Please note we will **NOT** meet on the Bank Holidays **6th** and **27th May**. Shirley Forster is our Instructor and sessions are in conjunction with Age UK.

Mary Stephenson ☎ **788232**

Longhorsley WI

Our next meeting, on Thursday **2nd May**, will be our AGM but we will also be celebrating our 40th Birthday. We restarted in 1984 and held meetings in St Helen's Church and Linden Hall before moving to the Village Hall after it was built.

Apart from our Village, we have Members from Netherwitton, Swarland and Longframlington, as well as three who have relocated to Rothbury, Widdrington and New Hartley and who are still travelling to meetings.

For any information contact:

Audrey Wiggins, Secretary ☎ **788692** or ✉ swigginsa@btinternet.com

Christian Vision for Men

The Christian Vision for Men group has monthly breakfasts at the Angler's Arms. Our next breakfast will be on Saturday **25th May** at 8.30am. Our speaker that morning will be Paul Gask, who is regional worker for Christian Vision for Men. Paul is always a popular speaker when he comes to our meetings. The charge for those attending the breakfast is £11 (cash only).

For more information and to book a place, please contact

Jim Cockburn on ☎ **01670 510130** or ✉ jim.cockburn@btinternet.com

GROUP ACTIVITIES

Walking Group

The walks are usually 4 to 6 miles long and it's a good idea to bring a drink and energy snack on the walk.

Our April walk from Wooler Common was very bracing in the wet and windy weather, so unfortunately no pictures were taken as our hands were frozen!

The next upcoming walks are:

Monday **6th May**: Ponteland, led by Estelle ☎ **07803 137279**

Thursday **16th May**: TBC

Monday **3rd June**: Penschaw, led by Sheena and Jan.

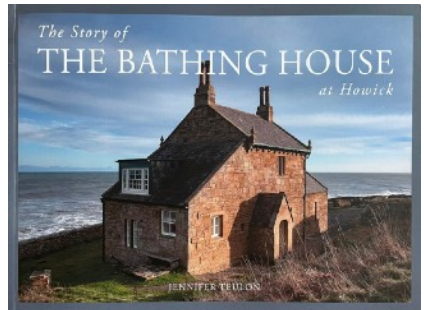
New walkers are always welcome. For more information please contact **Sheena & Jan** ☎ **07801 005634**

Longhorsley Local History Society

Our next meeting will be on Tuesday **14th May** in the Village Hall, 7 for 7.30pm. Refreshments available from 7pm.

Our speaker is a local author, Jen Teulon, on the History of the Howick Bathing House.

Like many of us, Jen became interested in the Bathing House after passing it on the coastal footpath, and later stayed in it with her family. She began to research the history of the Bathing House, its origins, uses and occupants. She gathered so much information that she has been able to publish her findings as an informative and well illustrated book.



Come along and hear all about this local landmark. All are welcome, admission is free.

Penny Ford

Longhorsley Village Hall Baby & Toddler Group

Join us every Thursday morning, 9.15 - 11.15am, for a play, chat and snacks. Only £2 per child (under 6 months free). Everyone is welcome! No booking necessary. Follow our Facebook page for updates.

Can you help?

We are looking for new people to take over the running of the group, now our own "toddlers" are at school! Please contact Joanna Reilly for an informal chat, so we can keep this important community group going.

GROUP ACTIVITIES

Ladies Lunch Group

The May Ladies Lunch will be at the Snowy Owl, Cramlington, at 12.30pm on the **15th May**. Could those intending to come please let me know at ✉ francesmurphy48@gmail.com, and copy to ✉ olivelight72@gmail.com

St. Helen's Coffee Morning

Our next Coffee Morning will be held on Saturday **4th May** at 10am in St. Helen's Church. There will be a raffle, and stall as usual. All are welcome.

Mary Stephenson ☎ **788232**



LOCAL EVENTS

 and Wingates Village Institute Hall present	
<p>Sat 25th May 6pm</p>	<p>Curry Night. £17 per person, £10 for under-10s. Includes welcome drink, three course meal, music. Join us for a night of delicious authentic Indian food. Starters include a sharing platter of poppadoms and dips, Aloo Tikki, Samosa and Onion & Broccoli Bhajis. Main dishes of Chicken Tikka Masala and Vegetarian Dhansak served with pilau rice, naan breads and Bombay Aloo. Followed by sorbet, coffee and cream. To book (£5 deposit per person) please contact ✉ secretarywvi@rothbury.net or ☎ 07501 383138.</p>
	<p>Out of the Box - Sun 26th May, 3pm (Highlights) Award winning performer Darryl J Carrington offers world-class juggling, magic, implausible tricks and a constant battle with physics without a word being spoken. It's like Mr. Bean with tricks - a Family-friendly act. Tickets: Adult £8, Child £6, Family £24 (see below)</p>
	<p>Rum Ragged - Thu 13th June, 7.30pm (Highlights) Rum Ragged take a bold approach to the distinct music of their home Newfoundland, Canada. They have performed at some of the world's premier folk, Celtic and roots venues and have recorded four award-winning studio albums. Tickets: Adult £12, Child £6 (see below)</p>
<p>Info and bookings from: ✉ famelton@rothbury.net, ☎ 01669 620512 and also online (for a small extra fee) from 🌐 www.highlightsnorth.co.uk</p>	

LOCAL EVENTS

Family Ceilidh

Longhorsley Village Hall

Saturday **18th May**, 7pm

Adults £5, Children Free

Tea/Coffee/Juice Available, Pooled Supper, BYOB



**Longhorsley
Village Hall**

Drummonds Close, Longhorsley, NE65 8UR

Future Events in the Village Hall

<p>Sun 30th June</p>	<p>Male Voice Choir. Adults £3, Children Free. Includes Afternoon Tea.</p>
<p>Sat 7th September</p>	<p>Music Night with Andy Craig. Adults £5, Children Free. Tea/Coffee/Juice Available. Pooled Supper - BYOB</p>
<p>Sat 12th October October (TBC) Fri 29th November Sat 7th December</p>	<p>Car Boot / Table Top Sale Family Quiz Wine Tasting Wreath Making</p>



Longhorsley Flower Festival

‘Celebrating Longhorsley’

St. Helen’s Church

Cash donations welcome for GNAAS

Preview: Friday **24th May** at 6pm
 Saturday **25th May** 10am - 4pm
 Sunday **26th May** 11.30am - 4pm
 Monday **27th May** 10am - 4pm

LOCAL EVENTS

Events at Forget Me Not Country Park

In Aid Of



TEARDROP SUPPORT GROUP

supporting families through baby loss due to miscarriage, stillbirth, neonatal death or termination

<p>Sat 4th May 10 - 11.30am</p>	<p>Charity Coffee Morning - join us in the bar for a hot drink, some beautiful bakes and a chat. Drinks and bakes require a cash donation. Any bakes / donations are welcome.</p>
<p>Sun 5th, 12th & 19th May 6.30 - 8.30pm</p>	<p>Three week Knitting Workshop, £60 for 3 sessions. Includes free tea and coffee throughout the workshops. Cash payment on booking.</p>
<p>Sat 25th May 6pm</p>	<p>Auction Fundraiser. Bid on lots of items! Bidding starts at 7pm. Cash only on the night.</p>
	<p>Separately, also on 25th May: El Classico - Classic Car Open Day, 12 noon - 3pm. A free event to launch the new development on the park.</p>



2024 Open Gardens

Bookings: scan the QR code, or
www.hospicecare-nn.org.uk/open-gardens-2024

Sun 26th May Hedgeley Hall

Sat 1st June Whitton Grange Fizz & Jazz

Sat 15th June Ilderton Glebe Fizz & Jazz

Sun 23rd June Lesbury Village

Sat 29th June Longhoughton Village

Post Office in Longhorsley Village Hall

Mon 9.15am - 12.15pm ~ Fri 11.30am - 1.30pm

Please note that this Outreach Service cannot accept large parcels.

TAKEAWAY FOOD IN LONGHORSLEY

The Shoulder of Mutton is open and offering takeaways every day
Sunday lunches 12 - 6pm ~ Monday to Saturday 5 - 8pm
See their menu at [🌐 shoulderofmuttonpub.com](http://shoulderofmuttonpub.com) ~ phone 788236 to order

The Flying Fryer every **Friday** from 4pm - 7pm, or later.
Facebook [The Flying Fryer](#) 📞 07984 426 725

Dou_h&co will visit the **second Thursday** in May from 4.30pm - 7.30pm
The next visit date is **9th May**.
Pre-order on 📞 07507 834 628 from Monday 9am.
See their menu on [🌐 dou-h.co.uk](http://dou-h.co.uk), Instagram or Facebook [Dou_h & Co.](#)

Mobile Library Visiting Times

The Mobile Library visits Longhorsley once a month,
on Fridays between 3pm and 4pm, in the Village Hall car park.
The next visits will be on the **3rd** and **31st May**.

THANKS

St Helen's Coffee Morning

Thank you to all who donated items for the raffle and stall, and all who supported the Coffee Morning on the 6th April.

We raised £64.50 for St. Helen's Church.

Mary Stephenson 📞 **788232**

CAN YOU HELP?



Thanks to those of you who have left food donations in our Longhorsley collection bin recently. Donations are always very much appreciated.

You can find out what items are urgently needed by checking on the website [🌐 wansbeckvalleyfoodbank.org](http://wansbeckvalleyfoodbank.org)

The current list includes: breakfast cereal, tinned rice pudding, baked beans, packets of biscuits, boxes of cup-a-soup, packets of custard, packets of potato (Smash or similar) and tinned ham.

Our collection bin is just inside the Village Hall entrance.

Many thanks, **Sue Etchells**



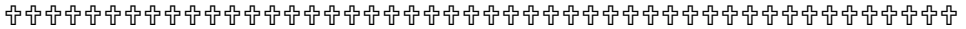
St Helen's Church

Sunday Service:

10am Holy Communion
(1st and 3rd Sundays)

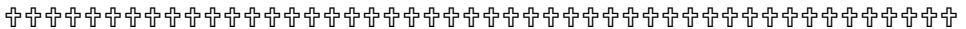
10am Morning Prayer
(2nd, 4th and 5th Sundays)

Everyone is welcome.



PCC Meeting

The next meeting of the PCC is on Wednesday **15th May** at 7.00pm in St Helen's Meeting Room.



St Helen's Contact Details

During the Interregnum the Area Dean will be responsible for the Parish.

Rev. Chris Grocock ☎ **01670 813358** 🌐 www.achurchnearyou.com



St Thomas Catholic Church

Every Monday and Thursday - Mass at 12noon

Every Sunday - Mass at 11.15am

✉ longhorsley.stthomas@rcdhn.org.uk

🌐 www.stthomaslonghorsley.com



Longhorsley Mission Free Church

Sunday Services:

11am Family Service and creche

5.30pm Prayer in the Mission Hall

6pm Evening Worship / Bible Study

For our other group meetings, please see the Group Activities sections.

Visitors are always very welcome to all our events.

Contact **Ian Pagan** ☎ **788263** ✉ idpagan@btinternet.com

Website: www.longhorsleymission.org.uk

Thought for the Month - New Beginnings

At last a glimpse of spring. I was beginning to get an inkling of how it was for Noah. The pervading whiff of damp dog, wet coats dripping over the bath, muddy wellingtons lined up at the door; how it must have felt when he opened the window of the ark and at last saw blue sky. A window of hope. We all love the story, the animals walking into the ark two by two, cuddly lions, friendly giraffes, all bobbing about on a brightly coloured boat under a blue sky - really?

The reality was undoubtedly smellier and messier and a logistical nightmare; and darker. God felt pain, so much pain in his heart at the evil and violence which was in the world that he vowed to destroy the creation he loved, and sent a flood to wipe out every living thing; except for Noah. Noah believed in God, was faithful to God, and trusted him, whatever life threw at him. So God was faithful to Noah and spared him, and his family, and trusted him with a remnant of creation to make a new beginning.

I don't know what greeted Noah when he finally opened the door, probably a lot of mud, and we've seen farms around the country underwater, crops unable to be planted or to grow. But he also saw the most beautiful phenomena spanning the sky, a rainbow. God's covenant promise that he would never again destroy life and that the seasons would never fail as long as the earth would last.

He has kept that promise, and that first rainbow has now become a symbol of hope for good.

The world however does not seem so different to Noah's day, violence and evil appear to have the upper hand, but God made another promise, hope for a new beginning when life can seem hopeless. He promised a child, Jesus his son, who would become the mediator for our rebellious humanity. Each Christmas we celebrate this promise fulfilled; and we celebrate Easter, Jesus' crucifixion and resurrection from death, with a new symbol of hope, the Cross, God's new covenant promise.

'For God so loved the world that he gave his one and only son that whoever believes in him will not die but have eternal life.'

John 3:16

To separate ourselves from God, from that hope, is death; to believe in him promises life, now.

Lesley Smith, Longhorsley Mission

Energy Advice from Community Action Northumberland

Energy Advisers are helping people in rural Northumberland to keep warmer and spend less on energy. If you would like a free home visit then please get in touch on ✉ energy@ca-north.org.uk or to find out more about their energy advice see 🌐 energyadvicenorthumberland.org.uk

SUPPORT LOCAL BUSINESS



Enquiry form

Emma Rutherford

Your local independent travel agent

01670 720022

emma.rutherford@mytc.com



Expert travel guidance
Personal caring service
ATOL & 100% financial
protection

@emmarutherfordtravelcounsellor

@emmastravelescapes



NORTHUMBERLAND PEST CONTROL

Fully licensed and insured pest and vermin control.
Moles, rodents, rabbits, wasps and other insects.

Residential / Agricultural / Estate / Commercial

Contact Rory Brotherton 788174 or 07769 176666

info@northumberlandpestcontrol.co.uk

www.northumberlandpestcontrol.co.uk and [facebook](#)



LONGSTAFF TREE SURGERY

Ian Longstaff, Rothbury, Northumberland

FREE SURVEY & QUOTES – COMPETITIVE PRICES

07528 744 011 or 01669 504 060

ilongstaff2002@gmail.com

Longstaff Tree Surgery

www.LongstaffTreeSurgery.com



Serving good food to eat-in or take-out

Monday to Thursday: 12-3pm and 5-8pm

Friday/Saturday: 12-9pm and Sunday: 12-6pm

www.shoulderofmuttonpub.com

The Shoulder of Mutton

SUPPORT LOCAL BUSINESS



Atom Intruder Alarms

Commercial & Domestic Security Systems
Alarm and CCTV
Installation & Maintenance

For a free, no obligation quote contact

Mark Ingram ☎ 0191 4283404

☎ 07860 471000 ✉ mark@atomalarms.co.uk



Prince William Bar & Grill

Situated in 5* Forget Me Not Country Park, Longhorsley.
Enjoy exceptionally high-quality fresh food in our cosy,
modern but classic establishment.
Adults only room, pool table, soft play, outdoor playpark.
Bingo Thursday 7pm.
Open to all, from 12 noon, 7 days a week.



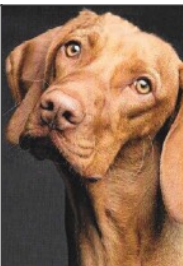
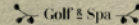
Golf Memberships

at Linden Hall Hotel

yearly prices from
£425

Contact 01670 500 011
for bookings and info.

Linden Hall Hotel



Helen's House and Pet Sitting

Friendly Tailored Service - Local - Professional

Experienced and reliable pet and house sitter
Also able to help with horses, ponies and smallholdings
Fully insured with references available

☎ **07940 809725** ✉ helen.e.arco@gmail.com

SUPPORT LOCAL BUSINESS

GreenThumb
LAWN TREATMENT SERVICE



Green Thumb

The leading lawn care specialists in the UK.
We offer a free, no obligation, lawn analysis
to assess your lawn's condition.

Prices from just £15 per treatment

Call us now on ☎ **0191 488 6202**

✉ newcastle@greenthumb.co.uk

Do you need a Power of Attorney [LPA]



LPA's allow people you trust to deal with your affairs and make decisions for you in later life if you can't. Once you lose capacity it's court and that's expensive!

**Please
don't wait
until it's far
too late**

**Northland Wills
Trusts & Probate
01670 788200**

FREE safe consultations in
your home OR over Zoom

**Specialists in Wills, Trusts,
Probate & Powers of Attorney**



AFR

Morpeth Carpet Cleaning

Carpet Cleaning ~ Upholstery Cleaning
Stain Removal & Protection ~ Free Estimates

Professional Carpet & Upholstery Cleaning | Newgate Street, Morpeth
Call Simon on 07506622680 or email info@ afr-carpetcleaning.co.uk



STEPHENSONS GARAGE

**MOT
Centre**

Servicing & Repair

Tyres, Batteries & Exhausts

We only use approved parts

Trustworthy, high quality work

Office ☎ 01670 788611

Mobile ☎ 07710 829437

✉ stephensonsgarage@gmail.com