



Longhorsley Tree

The newsletter for the Parish of St Helen's
July/August 2024 Issue 126

Newsletter website:
sites.google.com/site/LonghorsleyTree
or tinyurl.com/LonghorsleyTree
or Google "Longhorsley Tree"

Northern Ark Summer Update

It's been a hectic summer so far at Northern Ark Nursery and Hedgeley Honey, with the nursery open Thursday-Saturday from 11am-4pm. We've also been attending lots of markets (Morpeth, Kelso and Hexham), Flower Power Fairs and one-off shows across the North East. Check our Facebook page and www.northernarknursery.co.uk to see the latest events.

Essential jobs to do in the garden this summer:

- Liquid feed container plants and keep well watered in dry spells.
- Watch out for aphids on stems and leaves of young shoots.
- Ensure newly planted trees and shrubs do not dry out.
- Deadhead flower borders regularly to prolong flowering. Disbud and dead-head dahlias if growing for large blooms. Leave roses that produce attractive hips.
- Mulching borders can help retain moisture, and keep down weeds.
- Dig out perennial weeds.
- Collect seed from hardy annuals such as calendula, poppy and nigella.
- Take semi-ripe cuttings of shrubs. Root them in pots of gritty compost in a cold frame or even with a plastic bag tied over them.

At Hedgeley Honey, we have been feeding syrup to the bees, now the oil seed rape has passed over. A poor crop from this year, as the temperatures have been too cold for a nectar flow. The blackberries are now just coming out so there will be some honey from these. Our next big move for the bees is away down to East Anglia for the Borage crop. Meanwhile we are dealing with the inevitable swarms, now we have some heat in the weather. For more information on our online shop and stockists, visit www.hedgeleyhoney.co.uk.

The **Longhorsley Tree** is edited and delivered by a team of volunteers organised by St Helen's Church. We are indebted to Longhorsley Parish Council for funding the publication.

Longhorsley Parish Council

The next Parish Council meeting will be held on Wednesday, **10th July**, in the Village Hall, starting at 7pm, with a parishioner slot at 8pm.

Meeting notices are displayed on village notice boards, with minutes and other information found on the Parish Council website at:

northumberlandparishes.uk/longhorsley

Contact details for the current members are detailed below:

Clerk: Gillian Turner, 4 Lowther Close, Seaton Manor, Ashington, NE63 0HY
☎ **01670 812704** or ✉ parishclerk@longhorsley-pc.gov.uk

Chairman: Norman Douglas ☎ **07485 174529**

✉ norman.douglas@longhorsley-pc.gov.uk

Councillors: Sarah Alcock, Kirsty Bell, Peter Boyle, Jennie Parker, Anne Peat and Trevor Potts.

Final Accounts 2023/24

At the Parish Council Meeting held on 12th June 2024, Members received the Annual Internal Audit Report 2023/24. Members also received, considered and approved the Annual Governance Statement, Annual Accounting Statements and supporting documents for 2023/24.

All financial statements and supporting documents have now been forwarded to our External Auditors, MAZARs for review and therefore please note that all Accounting Statements are currently “unaudited and subject to change”.

The Notice of Electors Rights and Inspection dates, running from 17th June to 26th July, were also agreed and have been placed on the website and Village noticeboard.

D Day Anniversary 6th June 2024

Commemorating the Largest, Naval, Air and Land Operation in History

We were pleased that so many residents came to watch and take part in the official Beacon and Lamp Lights of Peace Lighting Ceremony held at 9.15pm on 6th June.

Our Chairman, Cllr Norman Douglas, read the Nation’s Tribute remembering those who gave their lives at home and abroad during the D Day landings, whose sacrifice

enables us all to enjoy the peace and freedom we have today. Our thanks also go to Cllrs Potts and Alcock for preparing and lighting the beacon – which looked amazing.



Defibrillator at the Village Hall

The Village Hall have paid for a new defibrillator, which is now installed and ready to use in emergencies. The old one unfortunately could not be fixed.

Jane Pringle

Longhorsley Parish Clerk Vacancy

Are you an experienced administrator or existing Clerk looking for an interesting and mostly home-based role? Longhorsley Parish Council is looking for an enthusiastic and self-motivated person to fill the role of Clerk to the Council and Responsible Financial Officer.

Experience as a Parish or Town Clerk and holding the Certificate in Local Council Administration (CILCA) is desirable. The post is for 8 hours a week and is based on working from home, with meetings normally taking place at the Village Hall on the second Wednesday of the month. A bi-monthly Committee meeting of the Moor is held on the first Wednesday of the month during April to October.

The salary will be paid in accordance with experience and in line with the National Joint Council Salary Scale LC1 rates SCP 13 to 17. The current hourly rate is £13.97 to £14.95 per hour.

For more information please see the online Tree, or contact the current Parish Clerk. Closing date: 31st July 2024. Interviews will be held mid-September 2024 for an anticipated start date of 4th November 2024.

GROUP ACTIVITIES

Ladies Lunch Group

The next Ladies Lunch will be at the Ad Gefrin Bistro in Wooler at 12.30pm on the **16th July**. The August outing will be at the Beresford Arms in Whalton at 12.30pm on the **14th August**.

Could those intending to come please let me know at

✉ francesmurphy48@gmail.com, and copy to ✉ olivelight72@gmail.com

Longhorsley WI

After Chasing Eclipses around the world last month we will be learning about Mary's Meals at our next Meeting.

This will be on Thursday **4th July** at 7.30pm when we will hear about the charity which was started with the aim of delivering one meal per day to school children in poor areas of the world. Visitors would be very welcome.

For any information contact:

Audrey Wiggins, Secretary 📞 **788692** or ✉ swigginsa@btinternet.com

Art Group

There is **NO** meeting on the 12th July (setting up for the fete). There is a meeting on **26th July**.

There will be **NO** meetings in August.

Val Douglas

GROUP ACTIVITIES

Longhorsley Local History Society

The history society held it's AGM on the 11th of June; here is an extract from the Chairman's report:

"We have had another very good year of interesting talks, well researched and presented and a very interesting visit to Cresswell Pele Tower last July. We have changed our format to a café style seating and now offer refreshments from 7pm, which has been well received.

There was a break in at the village hall recently and 2 of our 3 cabinets were damaged, but we are still able to lock them and nothing was taken. The British Association of Local History Societies publish booklets, which we have available and also hold talks on line. Please let me have your email address if you are interested in these.

The local projects we would like to develop are: Longhorsley water mill, Be-Ro flour research, the village wells and springs, transcribing the WW2 oral history project, Longhorsley pubs past and present and the history of the coal mine on Longhorsley Moor.

We have also been approached for advice about publishing a book of poems about Northumberland places and characters and Glyn Scott is working on a new edition of a book on Longhorsley history by Billy Ricalton. Please let us know if you're interested in helping with any of these projects. We are delighted to welcome Laurence Upton to the committee."

The AGM was followed by fascinating talk on the Census, by Garry Ritchie. He told us of the early history (much longer ago than you might think!), how it evolved and why, and taxation usually featured! Garry then brought us right up to date with modern developments and his work transcribing the older census records.

Penny Ford, Chairman

Christian Vision for Men

The Christian Vision for Men group has monthly breakfasts at the Angler's Arms. Our breakfast in July will be on Saturday **27th July** at 8.30am. The speaker that morning will be one of our own members, Tony Patrick, who will be speaking on the subject "Getting Ready for the Wedding".

Our breakfast in August will be on Saturday **31st August** at 8.30am. The speaker that morning will be Chris Chayera, a visual mouth artist from Africa. With his disabilities, he has a powerful testimony about his life serving God.

The charge for those attending the breakfast is £11 (cash only).

For more information and to book a place, please contact

Jim Cockburn on ☎ **01670 510130** or ✉ jim.cockburn@btinternet.com

GROUP ACTIVITIES

Keep Fit Class

We continue to exercise in the Village Hall on Monday mornings, between 9.15 and 10.15am. New members are most welcome.

In July we meet on the **8th** and **15th**, and if we decide to continue with two more in July, then members will be notified.

We then have a break during August and restart on the **2nd September**.

Shirley Forster is our Instructor and sessions are in conjunction with Age UK.

Mary Stephenson ☎ **788232**

Walking Group

The walks are usually 4 to 6 miles long and it's a good idea to bring a drink and energy snack on the walk. The next upcoming walks are:

Monday **1st July**: Etal and Ford, led by Penny ☎ **788278**.

Thursday **18th July**: Ponteland circular, led by Estelle ☎ **07803 137279**.

Monday **5th August**: Rothbury, led by Tracey ☎ **07528 014772**.

Thursday **15th August**: TBC, led by Keren ☎ **07547 566669**.

New walkers are always welcome. For more information please contact **Sheena & Jan** ☎ **07801 005634**

St. Helen's Coffee Morning

Instead of Coffee Morning on the **6th July**, the Church will be open for coffee and chat. All welcome.

PLEASE NOTE: **NO** Coffee Morning in August, the next one will be **7th September**.

Mary Stephenson ☎ **788232**



Embroidery Group

The meetings will be on **5th July** and **2nd August**.

Val Douglas

Longhorsley Local History Society

This year's summer outing will be on **9th July** to see LV50, the lightship, at Blyth. There will be a guided tour of one of the last preserved lighthouse ships in the country. Built in 1879, it is moored at Blyth harbour. The tour starts at 2.30pm, leaving Longhorsley Village Hall car park about 1.45pm.

We need to know how many are coming, so please inform **Derek Knox** by

✉ derekknox6710@gmail.com or **Glyn Scott** on ☎ **01670 788499**.

LOCAL EVENTS

Longhorsley Village Hall

is delighted to present

VoiceMale

Northumberland's Premier Male Folk Choir
with conductor - Jon Doran

Sunday **30th June**, 2.30pm-5.30pm

£3 on the door, entry includes tea and cakes



“Fun with Flowers”

Longhorsley Village Hall

Friday **19th July** and Friday **16th August**

2.30 - 4pm



Everyone welcome. Please book your place by emailing
Olive ✉ olivelight72@gmail.com or phone ☎ **07907 714455**
£5 each, which includes refreshments

Wingates Village Institute Hall

Saturday **31st August**
2pm - 6pm

Summer BBQ and live music

We will have a licensed bar and children's activities. Cost is £5 each, which includes Sausages, Salads and Bread.



The Longhorsley Ball



Just a reminder that this year's Longhorsley Ball will be held at Linden Hall Hotel on Saturday **7th December**. Tickets are £55pp to include a glass of fizz on arrival, 3 course sit down dinner, entertainment from our fabulous close up magician, and dancing to live music from the wonderful Shakedown, followed by a disco.

It's always a perfect way to start the festive period, and a great fundraiser for local causes in the village.

Tickets are on sale now, so please do get in touch - it would be fantastic to see you there.

Lizzy Prescott ☎ **07595 909510** and **Karen Fish** ☎ **07803 603376**



Village Green/Millennium Green **12.30pm - 2.00pm**
Dog Show (registration from 12:00), Hilltop Animal Sanctuary,
Dogs Trust, Northumberland Hedgehog Rescue Centre

Longhorsley First School **2.00pm - 5.00pm**
Local Business Stalls, Deja Bru Coffee Van, Fire Brigade, Police, Fun Races and
Games for all the Family!

Longhorsley Village Hall **2.00pm - 5.00pm**
Industrial Section, Cream Teas, Northumbrian Pipers, Musical Entertainment,
Face Paints, Treasure Hunt, Raffle, Tombola, Mobile Bar, Barbeque, Football Fun

Around the Village

Whilst taking part in our Treasure Hunt, we hope you enjoy spotting some of the scarecrows for our Scarecrow Competition, the well-tended allotments and beautiful gardens!

Entry is free, but there will be donation buckets at various points.
All funds raised will go towards future events!

**MORE VOLUNTEERS WILL BE NEEDED ON THE DAY - PLEASE CONTACT US IF YOU
WOULD LIKE TO HELP MAKE THIS A DAY TO REMEMBER!**

For more information, please follow:

 Longhorsley Village Fete -  @longhorsleyvillagefete
or email longhorsleyfete@gmail.com

PRE-FETE DAY EVENTS

SCARECROW COMPETITION - THEME: Television Characters

We're so excited to bring you the Longhorsley Fete Scarecrow Competition! This fun event will show off the imagination and creative skills of our residents, to create a scarecrow based on a TV Character/Characters. We'd love to see your scarecrows still displayed on Fete Day, but to make it easier for our judges we ask you to submit a photograph of your finished scarecrow - with your name and address - to longhorsleyfete@gmail.com by Friday 5th July 2024, at 5pm.

Judges will be looking at the variety of materials used and how they've been constructed – recycling and reusing materials is an important element!

- All entries must be within the Parish of Longhorsley.
- The scarecrow must be on display and have its photograph submitted by Friday 5th July at 5pm.
- Only ONE entry per house / class / business or group.
- The scarecrows must be handmade and family appropriate, and must not be supported or hung by the neck.
- The scarecrow must be displayed on your own property / school / business.
- Judging of the scarecrows will be completed by 12th July 2024.
- Photographs will be displayed and the winners will be announced at the Fete.

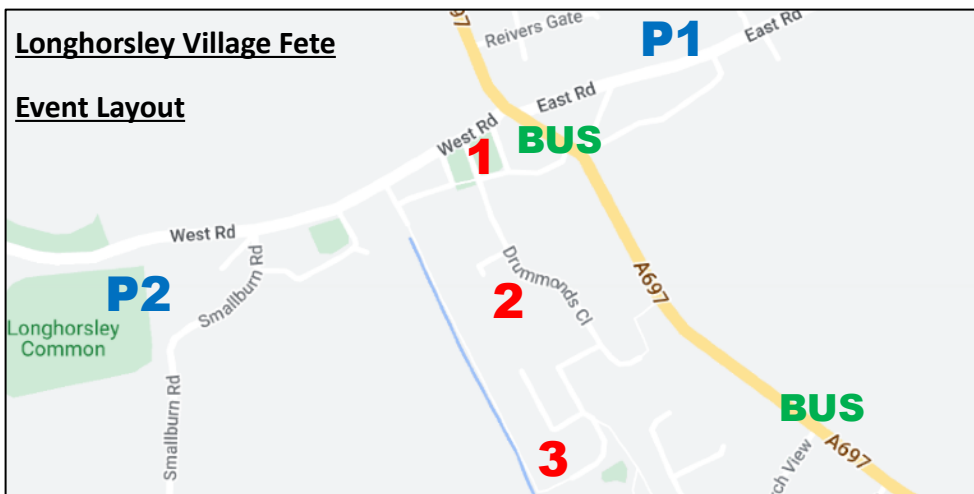
BEST GARDEN / BEST ALLOTMENT

We have some wonderfully well-kept gardens and allotments in Longhorsley, and if you would like your garden or allotment to be considered for "Best Garden" or "Best Allotment" then please register by **Friday 5th July 2024 at 5pm** using a form from the Village Hall or via email to longhorsleyfete@gmail.com.

THE MAUREEN TAYLOR AWARD FOR CREATIVE WRITING

In honour of our much-missed local resident, Maureen Taylor, we invite children from each of the three age groups to submit a short story entitled "**A Surprise Visitor**".

Entries should be posted into the box in either the Village Hall or Longhorsley First School no later than **5pm on Friday 5th July 2024** to allow for judging.



P	<u>P1 Parking:</u> Mission Field, East Road	1	Village Green
	<u>P2 Overflow Parking:</u> Longhorsley Common, West Road	2	Longhorsley First School
		3	Longhorsley Village Hall
BUS	The X14 bus offers an excellent service to the village - please use it!		

1 - Village Green / Millennium Green (12:30-5pm)

Dog Show (12:30-2:00pm) Dogs Trust Charity
 Hilltop Animal Sanctuary Northumberland Hedgehog Rescue

2 - Longhorsley St Helen's C of E First School (2-5pm)

Local business stalls: - Traybake Fairy - Kate Simpson - Todburn Soaps - Deja Bru
 - Magical Potts - Craft Angel - Kevin Nicholls - Roar North
 - Northern Ark - Book Stall - Morpeth Archery Club

Rescue Vehicles Fun races and games for all the family!

3 - Longhorsley Village Hall (2-5pm)

Indoors

Cream Teas Industrial Section Northumbrian Pipers Raffle

Outdoors

Tombola Treasure Hunt Merry Tipple Mobile Bar
 Barbeque Face Painting Football Games on the MUGA
 Prize giving ceremony (4:40-5:00pm)

Musical Entertainment: Longhorsley Explorers, Richie Gray, Jimi Handtrix, Andy Craig

MORE DETAILED TIMETABLE AVAILABLE ON THE DAY!

DOG SHOW

Woof woof! Calling all our four-legged friends to come and join us on the Village Green from **12:30pm** on Fete Day (registration will start from 12:00). Entry is **free**, but there will be donation buckets at various points. All funds raised will go towards future events!

<u>Class 1</u>	Best puppy (under 12 months)
<u>Class 2</u>	Best dog or bitch (1-7 years)
<u>Class 3</u>	Best veteran (over 7 years)
<u>Class 4</u>	Junior handler (under 14 years of age)
<u>Class 5</u>	Best Rescue
<u>Class 6</u>	Most handsome dog / Prettiest bitch
<u>Class 8</u>	Waggiest Tail
<u>Class 9</u>	Best in Show (1 st and 2 nd from all classes)

Rules:

- ◆ Limited to 12 dogs per class, on a first come first served basis
- ◆ Dogs must be kept on a lead at all times
- ◆ Entries must abide by the competition rules
- ◆ Please do not enter if your bitch is in season
- ◆ Puppies must be fully vaccinated
- ◆ The judge's decision is final
- ◆ Entry is at your own risk

Special Thanks To:

Robson & Prescott Vets
Elaine Carmichael & Linda Henderson
Pickililly Dog Grooming

PLEASE NOTE THAT NO DOGS ARE ALLOWED ON THE SCHOOL GROUNDS OR INSIDE THE VILLAGE HALL (OTHER THAN ASSISTANCE DOGS).

Please keep this in mind before enjoying the rest of the activities the Fete has to offer.

SPECIAL THANKS

We are so grateful to everyone who has made this event happen. This is the first year of Longhorsley Village Fete, and it would not have been possible without the generous donations from:



**Northumberland Estates
Community Fund**



Longhorsley Village Hall

and

Longhorsley Parish Council

...as well as all the local businesses who have so kindly donated to our raffle. We are also grateful for all the donations to our tombola and book stall.

The following also deserve a special mention:

Smallburn Farm, Longhorsley St Helen's CofE First School, Robson & Prescott Vets, Linda Henderson, Elaine Carmichael, Pickililly Dog Grooming, all of our Industrial Section judges, Norman Douglas, Peter Boyle and ALL of our volunteers.

And of course to our amazing Fete Committee. None of this would have happened without everyone giving up their time to arrange this special day.

Thank you, thank you, thank you!

If you would like to get involved next year, we would love to have you. Events like this are only made possible due to the committee and volunteers. We will be holding our AGM shortly, so keep your eyes peeled for more information!

INDUSTRIAL SECTION

The Industrial Section is a traditional part of many village fetes, where everyone has the opportunity to show off their skills and hard work, whilst sharing and enjoying examples of others' work. There is still a healthy competition between friends and neighbours, but by bringing along examples of your work or product to the Fete you will be participating in a celebration of talents that we have around us in Longhorsley!

Arrangements for Exhibiting

Check in exhibits	8:30am - 10:30am
Judging to take place between	10:30am - 11:30am
Village Hall is open	1:00pm - 5:00pm
Collection of exhibits	4:00pm - 5:00pm
Awards Presentation	4:40pm - 5.00pm

RULES OF ENTRY OF EXHIBITS INTO THE INDUSTRIAL SHOW

1. The Industrial Section is open to all who live in the area of Longhorsley.
2. There is a limit of **3** entries per person, per class.
3. All exhibits must be bona-fide property of the exhibitor and not show the identity of the exhibitor.
4. All produce must have roots and tops left intact, unless otherwise stated.
5. Jams/chutneys must have a wax disc and a label showing the date made.
6. Competent Judges have been appointed by the Fete Committee, and the Judges' decisions are final.
7. Points will be awarded as follows:
 - ✓ 3 points for 1st - 2 points for 2nd - 1 point for 3rd
 - ✓ Judges may award an exhibit with Highly Commended if (in their opinion) it was merited, though no points would be attributed.
8. The Committee cannot be held responsible for loss and damage to exhibits.
9. All pots, vases, plates, trays etc. must be provided by the exhibitors.
10. Exhibits must not be removed from the Village Hall until after 4.00pm but should be collected before 5.00pm.

A huge thank you to all our judges! Without their skill and expertise we would not be able to have such a full event, and we are very grateful to them for giving up their time.

INDUSTRIAL SECTION 2024

It is FREE to enter ALL sections

SENIOR SECTIONS

Section 1 – Floral Art

1. Arrangement incorporating a piece of wood
2. Arrangement in an unusual container
3. Arrangement using mostly foliage

Section 2 – Flowers, Fruit & Vegetables

4. 1 lettuce with roots on
5. 2 onions dressed
6. 4 pea pods
7. 2 courgettes
8. 3 beetroot
9. 3 white potatoes
10. Soft fruit (any one variety) 10 on a plate
11. 1 single rose
12. 3 roses
13. Vase of flowers from the garden

Section 3 – Cookery

14. 3 fruit scones
15. 3 pieces of shortbread
16. 3 decorated cupcakes
17. Victoria sandwich cake - jam filled, not sugar dusted
(ingredients: 4oz flour, 4oz sugar, 4oz margarine, 2 eggs)
18. Carrot cake - 3 pieces
19. Loaf of bread (any shape) brown or white
20. Men's cookery class: Lemon drizzle cake
21. Jar of jam
22. Jar of chutney
23. Traybake - 4 pieces

Section 4 – Art & Handicraft

24. A hand knitted article
25. A crochet article
26. An article or item of embroidery to include cross-stitch
27. A photograph (5"x7") – "Village Life"
28. A painting or drawing not exceeding 30"x24"
29. An item of woodwork
30. An item of metalwork
31. An item made from recycled materials
32. A handmade greetings card

JUNIOR SECTION

Young people are also invited to enter any of the Senior Sections.

Section 5 – Children's Section

Entries in Section 5 will be judged in three age groups:

(A) 1-4 years

(B) 5-9 years

(C) 10-13 years

33. A miniature garden in a tin lid
34. A decorated biscuit
35. A vegetable creature
36. An A4 poster for Longhorsley Village Fete 2025
37. A 3D model – in any medium – of a CASTLE

Arrangements for Exhibiting

Check in exhibits: 8:30-10:30am
Judging to take place: 10:30-11:30am
Village Hall is open: 1:00-5:00pm
Collection of exhibits: 4:00-5:00pm
Awards Presentation: 4:40-5:00pm

The Maureen Taylor Award for Creative Writing

In honour of our much-missed local resident, Maureen Taylor, we invite children from each of the three age groups to submit a short story entitled "**A Surprise Visitor**". Entries should be posted into the box in either the Village Hall or Longhorsley First School no later than **5pm on Friday 5th July 2024** to allow for judging. Winners will be announced at the Fete.

LONGHORSLEY VILLAGE FETE – INDUSTRIAL SECTION

ENTRY FORM 2024

ENTRY IS FREE

A SEPARATE ENTRY FORM IS NEEDED FOR EACH PERSON

Please bring a completed entry form with your exhibits. Additional forms are available from the Village Hall, or by emailing longhorsleyfete@gmail.com.

Name	
Contact Details	

Please write the number of exhibits beside each class number.

There is a limit of 3 entries per person, per class.

Senior Sections

<u>Section 1</u> Floral Art	1	2	3		
<u>Section 2</u> Flowers and Vegetables	4	5	6	7	8
	9	10	11	12	13
<u>Section 3</u> Cookery	14	15	16	17	18
	19	20	21	22	23
<u>Section 4</u> Art and Handicraft	24	25	26	27	28
	29	30	31	32	

Junior Sections

Age Group (please tick) 1-4yrs 5-9yrs 10-13yrs

<u>Section 5</u> Junior Sections	33	34	35	36	37
-------------------------------------	----	----	----	----	----

The Maureen Taylor Award entries to be submitted in box at Longhorsley Village Hall or Longhorsley St Helen's C of E First School.

TOTAL NUMBER OF EXHIBITS IN ALL SECTIONS

--

Your County Councillor

The long running saga continues to play out but I am more confident that the Police will activate their camera van in the village this summer.

It has been discovered that there are some Traffic Orders not in place that are needed for them to deploy and prosecute, and they have asked us to cut back vegetation around the signs. So hopefully all this will be done in a month or two and I will continue to be annoying about it. And, in doing so, will keep pressing for the static cameras to get back into life again.

I am not a fan of social media I am sorry to say, so if you need me to help with anything please email me anytime.

Glen Sanderson 07730 979737 glen.sanderson@northumberland.gov.uk

LOCAL EVENTS

 Longhorsley Village Hall <small>Drummonds Close, Longhorsley, NE65 8UR</small>		Future Events in the Village Hall
Sat 7th September 7pm	Music Night with Andy Craig (Blue Sky) Adults £10, Children Free Tea/Coffee/Juice Available. Pooled Supper - BYOB	
Sat 12th October October (TBC) Fri 29th November Sat 7th December	Car Boot / Table Top Sale Family Quiz Wine Tasting Wreath Making	

THANKS

St Helen's Coffee Morning

Thank you to all who supported the Coffee Morning on the 1st June. We are grateful for donations to stall and raffle and we raised £80.50 for St. Helen's Church.

Mary Stephenson ☎ 788232

Flower Festival

Thank you to everyone who supported the Flower Festival in any way. £660 was raised for the Great North Air Ambulance and a letter of appreciation has been received.

Olive Light



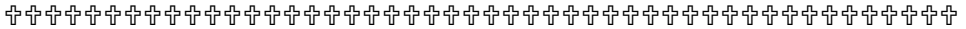
St Helen's Church

Sunday Service:

10am Holy Communion
(1st and 3rd Sundays)

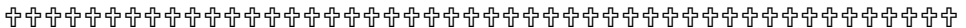
10am Morning Prayer
(2nd, 4th and 5th Sundays)

Everyone is welcome.



PCC Meeting

The next meeting of the PCC is on Wednesday **17th July** at 7.00pm with a parishioner slot at 7.30pm.



St Helen's Contact Details

During the Interregnum the Area Dean will be responsible for the Parish.

Rev. Chris Grocock ☎ **01670 813358** 🌐 www.achurchnearyou.com



St Thomas Catholic Church

Every Monday and Thursday - Mass at 12noon

Every Sunday - Mass at 11.15am

✉ longhorsley.stthomas@rcdhn.org.uk

🌐 www.stthomaslonghorsley.com

Thought for the Month: not provided this month

Post Office in Longhorsley Village Hall

Mon 9.15am - 12.15pm ~ Fri 11.30am - 1.30pm

Please note that this Outreach Service cannot accept large parcels.

Mobile Library Visiting Times

The Mobile Library visits Longhorsley once a month, on Fridays between 3pm and 4pm, in the Village Hall car park.

The next visits will be on the **26th July** and **23rd August**.



Longhorsley Mission Free Church Sunday Services:

11am Family Service and creche
5.30pm Prayer in the Mission Hall
6pm Evening Worship / Bible Study

For our other group meetings, please see the Group Activities sections.
Visitors are always very welcome to all our events.

Longhorsley Mission Bible Convention, 6th and 7th July 2024

Held in Memorial Hall, Longframlington

Speakers: Keith Berry (Hammersmith) and Philip Eveson (Wrexham).

Saturday **6th July** at 3.30pm and 6pm

Sunday **7th July** at 11am, 3.30pm and 6pm

Tea provided each day after the afternoon meetings. All are welcome.

Contact **Ian Pagan** ☎ **788263** ✉ idpagan@btinternet.com

Website: www.longhorsleymission.org.uk

Water fluoridation expansion in the North East

The government are proposing to expand community water fluoridation further in the North East. This will include the water supply to Longhorsley. For further information or to respond to the consultation see the link on our website or visit www.gov.uk/government/consultations.

TAKEAWAY FOOD IN LONGHORSLEY

The Shoulder of Mutton is open and offering takeaways every day

Sunday lunches 12 - 6pm ~ Monday to Saturday 5 - 8pm

See their menu at 🌐 shoulderofmuttonpub.com ~ phone 788236 to order

The Flying Fryer every **Friday** from 4pm - 7pm, or later.

Facebook [The Flying Fryer](https://www.facebook.com/TheFlyingFryer) ☎ 07984 426 725

Dou_h&co visits on one **Thursday** in the month from 4.30pm - 7.30pm

The next visits will be on **4th July** and **22nd August**.

Pre-order on ☎ 07507 834 628 from Monday 9am.

See their menu on 🌐 dou-h.co.uk, Instagram or Facebook [Dou_h & Co](https://www.facebook.com/Dou_h_Co).

September Edition - The last date for submissions is **20th August**.

Jan and Sheena Haveman 07834 740649 longhorsley.tree@gmail.com

Longhorsley Village Hall Sweepstake - June Winners

1st Prize	£50	Alan Etchells	3rd Prize	£15	Stuart Anderson
2nd Prize	£25	Brian Forster	4th Prize	£10	Sally Wooley

There are still some spare numbers left in the sweepstake. If you would like to take part, or even take out another number, then please get in touch with **Garry** or **Janice Ritchie** ☎ **07713 583311** ✉ garry7256@aol.com

SUPPORT LOCAL BUSINESS



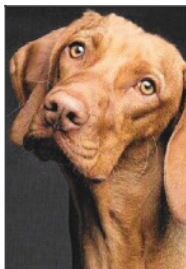
Atom Intruder Alarms

Commercial & Domestic Security Systems
Alarm and CCTV
Installation & Maintenance

For a free, no obligation quote contact

Mark Ingram ☎ 0191 4283404

☎ 07860 471000 ✉ mark@atomalarms.co.uk



Helen's House and Pet Sitting

Friendly Tailored Service - Local - Professional

Experienced and reliable pet and house sitter

Also able to help with horses, ponies and smallholdings

Fully insured with references available

☎ **07940 809725** ✉ helen.e.arco@gmail.com

Golf Memberships

at Linden Hall Hotel

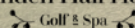
yearly prices from

£425

Contact 01670 500 011

for bookings and info.

Linden Hall Hotel



SUPPORT LOCAL BUSINESS



NORTHUMBERLAND PEST CONTROL

NORTHUMBERLAND PEST CONTROL

Fully licensed and insured pest and vermin control.
Moles, rodents, rabbits, wasps and other insects.

Residential / Agricultural / Estate / Commercial

Contact Rory Brotherton ☎ 788174 or 07769 176666

✉ info@northumberlandpestcontrol.co.uk

🌐 www.northumberlandpestcontrol.co.uk and facebook



Enquiry form

Emma Rutherford

Your local independent travel agent

01670 720022

emma.rutherford@mytc.com



Expert travel guidance
Personal caring service
ATOL & 100% financial
protection

📘 @emmarutherfordtravelcounsellor

📷 @emmastravelescapes



Serving good food to eat-in or take-out

Monday to Thursday: 12-3pm and 5-8pm

Friday/Saturday: 12-9pm and Sunday: 12-6pm

🌐 www.shoulderofmuttonpub.com

📘 The Shoulder of Mutton

LONGSTAFF TREE SURGERY

Ian Longstaff, Rothbury, Northumberland

FREE SURVEY & QUOTES – COMPETITIVE PRICES

☎ 07528 744 011 or 01669 504 060

✉ ilongstaff2002@gmail.com

📘 Longstaff Tree Surgery

🌐 www.LongstaffTreeSurgery.com

SUPPORT LOCAL BUSINESS



Morpeth Carpet Cleaning

Carpet Cleaning ~ Upholstery Cleaning
Stain Removal & Protection ~ Free Estimates

Professional Carpet & Upholstery Cleaning | Newgate Street, Morpeth
Call Simon on 07506622680 or email info@afir-carpetcleaning.co.uk



STEPHENSONS GARAGE



Servicing & Repair
Tyres, Batteries & Exhausts
We only use approved parts
Trustworthy, high quality work
Office ☎ 01670 788611
Mobile ☎ 07710 829437

✉ stephensongarage@gmail.com



Green Thumb

The leading lawn care specialists in the UK.
We offer a free, no obligation, lawn analysis
to assess your lawn's condition.

Prices from just £15 per treatment

Call us now on ☎ **0191 488 6202**

✉ newcastle@greenthumb.co.uk

Do you need a Power of Attorney [LPA]



LPA's allow people you trust to deal with your affairs and make decisions for you in later life if you can't. Once you lose capacity it's court and that's expensive!

**Please
don't wait
until it's far
too late**

**Northland Wills
Trusts & Probate
01670 788200**

FREE safe consultations in
your home OR over Zoom

**Specialists in Wills, Trusts,
Probate & Powers of Attorney**

