



Longhorsley Tree

The newsletter for the Parish of St Helen's
November 2024 Issue 129

Newsletter website:
sites.google.com/site/LonghorsleyTree
or tinyurl.com/LonghorsleyTree
or Google "Longhorsley Tree"

Free Hedge Laying Courses - Places are Limited!

As part of Brinkburn & Hesleyhurst Parish Council's 5-year plan in improving biodiversity, we are offering free hedge laying courses. The courses are run by a local professional hedge layer. This project is open to all ages from 16 onwards and aimed at beginners, but all abilities welcome.

You will learn how to:

- Lay a hedge
- Identify suitable hedges
- Learn hedge laying techniques
- Identify which tools to use
- Identify what PPE to wear
- Understand benefits of hedge laying

The course will involve working on a living hedge which will be laid using the traditional style. All tools, PPE, and training will be provided. Spectators are welcome. The hedge will be located between Longframlington and Longhorsley. One day courses will take place in **early December**. This project has been generously funded by Wingates Community Wind Farm Fund.

To find out more and to book a place contact Brinkburn & Hesleyhurst Parish Council at clerk@brinkburn.net



Dec/Jan Edition - The last date for submissions is **20th November**.
Jan and Sheena Haveman 07834 740649 longhorsley.tree@gmail.com
For a larger print version please contact **Olive** on **07907 714455**.

The **Longhorsley Tree** is edited and delivered by a team of volunteers organised by St Helen's Church. We are indebted to Longhorsley Parish Council for funding the publication.

Longhorsley Parish Council

The next Parish Council meeting will be held on Wednesday, **13th November**, in the Village Hall, starting at 7pm, with a parishioner slot at 8pm. Meeting notices are displayed on village notice boards, with minutes and other information found on the Parish Council website at: northumberlandparishes.uk/longhorsley

Contact details for the current members are detailed below:

Clerk: Gillian Turner, 4 Lowther Close, Seaton Manor, Ashington, NE63 0HY
☎ **01670 812704** or ✉ parishclerk@longhorsley-pc.gov.uk

Chairman: Norman Douglas ☎ **07485 174529**
✉ norman.douglas@longhorsley-pc.gov.uk

Councillors: Sarah Alcock, Kirsty Bell, Peter Boyle, Jennie Parker, Anne Peat and Trevor Potts.

A Big Thank-You.....

To all of our residents who have undertaken garden works over the past few weeks, such as trimming hedges, trees and shrubs to prevent them overhanging and blocking pathways etc.

Parking-up on Pavements

A reminder for all motorists to be considerate when parking in the Village and to have consideration for pedestrians and other users by NOT parking on pavements and pathways. We have received comments from several residents of late, saying that some parking is causing dangerous situations, whereby they are having to walk on busy roads as they cannot get along the pavement.

Disposal of Dog-Poo Bags

If your dog fouls in a public area it is your responsibility to ensure the mess is picked up and properly disposed of. Dog Fouling is one of the top anti-social problems nationwide. Dog mess is unsightly, unpleasant and can spread disease, or in extreme cases, cause blindness.

Dispose of bags in a dog bin, a litter bin, or take it home to dispose of in your household bin. Not disposing of a 'poo' bag correctly is also a dog fouling and littering offence for which a Fixed Penalty Notice or Court fine may be payable. Be aware that we do have several CCTV cameras in operation and we are currently looking into extending their coverage!!

Mobile Library Visiting Times

The Mobile Library visits Longhorsley once a month, on Fridays between 3pm and 4pm, in the Village Hall car park. The next visits will be on the **15th November** and **13th December**.

Your County Councillor

This week we had a visit from USA company QTS and Blackstone top brass. These are the folks who have bought the land at Cambois from us and they will develop A1 Data Centres over the coming years. The investment at £10 billion is the largest of its kind in Europe.

The planning application is due in December.

QTS have a wide range of experience in this field and Blackstone are one of the largest financial institutions in the world.

Despite them being world players I have found them very good to get on with and I believe the deal we have struck will benefit all the County.

When all is signed up NCC will receive £110 million over the period and we have set up a fund entirely ring-fenced for new business growth and jobs across the County. That is a lot of money and we feel we will be able to attract some more investors in manufacturing in the next twelve months.

If you would like any further details on this or any other NCC matter please get in touch anytime.

Glen Sanderson 07730 979737 glen.sanderson@northumberland.gov.uk

Longhorsley Village Hall Sweepstake

A monthly sweepstake is run within the village to raise funds for the Village Hall, all profits from the sweepstake go towards the upkeep and running of the hall and it raises in the region of £800 to £900 per year. This money goes a long way to help keep the Village Hall running and stay an asset to the whole of our community.

The monthly draws have a first prize of £50, second prize of £25, third prize of £15 and a fourth prize of £10. Entry into the draw costs only £1 per month or £12 per year, the money is collected in January.

If you would like to help out the Village Hall and perhaps win some money, please consider entering the sweepstake.

We are also looking for some additional volunteers to help us collect the entry monies each January.

If you would like to enter or are able to help out with collecting, please contact either Garry or Janice Ritchie. We stay at 24 Church View, or our phone number is ☎ **07713 583311**.

Thanking you for your support, **Garry** and **Janice**

Post Office in Longhorsley Village Hall

Mon 9.15am - 11.30am ~ Fri 11.30am - 1.30pm

Please note that this Outreach Service cannot accept large parcels.

GROUP ACTIVITIES

Toddlers' Group		Every Thu	9.15am-11am	L'horsley V Hall	Term-time	Joanna Reilly 07739 321737	
Mission Baby & Toddler Group		Every Tue	9.30am-11.30am	Mission	Term-time	Win Pagan 788263	
Bible Club		Every Fri	3.15pm-4.30pm	Mission	Term-time	Ian Neilly 01670 518202	
Longhorsley Explorers		Every Mon-Thu	7.30am-6pm	L'horsley V Hall	Term-time	07522 486910 07522 486953	
		Every Fri	7.30am-1.30pm				
Junior Football Club	U8's	Every Mon	6pm-7pm	MUGA	Oct-Apr Note: May-Sep on the Common	Steven Dick 07803 026786 Ben McMorrow 07970 840587 Andrew Archibald 07810 115152	
	U6's		5pm-6pm				
	U9's		6pm-7pm				
	U12's Giras	Every Tue	7pm-8pm				
	U7's		Every Wed				5pm-6pm
	U11's						6pm-7pm
	U13's	7pm-8pm					
	U8's	Every Thu	5pm-6pm				
	U12's Zebs		6pm-7pm				
U14's	7pm-8pm						
Longhorsley Carpet Bowls		Every Mon	7pm-9pm	L'horsley V Hall	Sept-June	Olive Light 07907 714455	
Wingates Carpet Bowls		Every Wed	7.30pm	Wingates V I Hall	Sept-Mar	Heather 01670 778413	
Wingates Bridge Club		Every Tue	7.30pm-9.30pm	Wingates V I Hall		Robert Famelton 01669 620512	
Wingates Reading Group		2nd Thu	7.30pm	WG/NW V Halls			
Embroidery Group		1st Fri	2pm	L'horsley V Hall	1st Nov	Val Douglas 07483 233074	
Art Group		2nd, 4th Fri	2pm-4pm	L'horsley V Hall	8th Nov 22nd Nov	Val Douglas 07483 233074	
Local History Society		2nd Tue alt months	7.30pm	L'horsley V Hall	12th Nov	Derek Knox 788329	
St Helen's Coffee Morning		1st Sat	10am	St Helen's Church	2nd Nov	Mary Stephenson 788232	
Wildlife Trust		1st Mon	7.30pm	Jubilee Rothbury	4th Nov	Conrad Chilvers 788351	
Longhorsley WI		1st Thu	7.30pm	L'horsley V Hall	7th Nov	Audrey Wiggins 788692	

Women Together	Every Thu	10.45am-12pm	Mission		Win Pagan 788263
Christian Vision for Men	Last Sat	8.30am	Anglers Arms	30th Nov	Jim Cockburn 510130
Walking Group	1st Mon 3rd Thu	10am	Start of walk	See below	Jan & Sheena 07801 005634
Keep Fit Class	Every Mon	9.15am-10.15am	L'horsley V Hall		Mary Stephenson 788232
Adult 5-a-side	Every Sun	6.30-7pm	MUGA or Common		Steven Bates 07793 888 311
Ladies Lunch Group	Every Month	Lunch time	Varies	13th Nov 5th Dec	Frances Murphy 07909 992046
Warm Space	Every Wed	10am-12pm	L'horsley V Hall		Jane Pringle 07729 182511

Longhorsley WI

We had an enjoyable talk by Joan Howard last month, who came along with her knitted figures depicting notable Morpeth characters. These were immaculately dressed in appropriate costumes and have been displayed in Morpeth Town Hall.

Our next Meeting is on Thursday **7th November** at 7.30pm when we will be Paper Crafting with Member Laurelie.

For any information contact:

Audrey Wiggins, Secretary ☎ **788692** or ✉ swigginsa@btinternet.com

Christian Vision for Men

The Christian Vision for Men group has monthly breakfasts at the Angler's Arms. Our next breakfast will be on Saturday **30th November** at 8.30am. That morning three or four of our members will give short talks about some aspects of their lives. The charge for those attending the breakfast has now risen to £12 (cash only).

For more information and to book a place, please contact:

Jim Cockburn on ☎ **01670 510130** or ✉ jim.cockburn@btinternet.com

Walking Group

The walks are usually 4 to 6 miles long and it's a good idea to bring a drink and energy snack on the walk.

The next upcoming walks are:

Monday **4th November**: Ingram Valley, led by Sheena and Jan.

Thursday **21st November**: Dunstanburgh circular, led by Penny ☎ **788278**.

New walkers are always welcome. For more information please contact **Sheena & Jan** ☎ **07801 005634**

GROUP ACTIVITIES

St. Helen's Coffee Morning

The Coffee Morning on Saturday **2nd November** will be held in St. Helen's Church and will be in aid of the British Legion Poppy Appeal. See the Local Events section for details.



Mary Stephenson ☎ **788232**

Ladies Lunch Group

The next Ladies Lunch will be on the **13th November** at the Cook and Barker at 12.30pm.

The Christmas lunch will be at Linden Hall on the **5th December** at 12.30 for 1pm.

Please let me know if you intend to come to either event at

✉ francesmurphy48@gmail.com, and copy to ✉ olivelight72@gmail.com

Northumberland Wildlife Trust - Coquetdale Group

We meet on the first Monday of each month from September to April at the Jubilee Hall, Rothbury. Outings/visits are organised in the summer months. Guests are very welcome and a fee of £4 is charged. Doors open at 7pm with tea and coffee available for a small donation.

Monday **4th November** at 7.30pm: Geoff Sample will talk about "Tracking Europe's Wild Soundscapes".

Monday **2nd December** at 7.30pm: Jan Wood will talk about his times "From an Apprentice Gardener to Head Gardener at Lilburn Tower".

Contact **Conrad Chilvers** ☎ **788351**.

Keep Fit Class

We continue to exercise in the Village Hall on Monday mornings, between 9.15 and 10.15am. New members are most welcome.

Shirley Forster is our Instructor and sessions are in conjunction with Age UK.

Mary Stephenson ☎ **788232**

Longhorsley Local History Society

The next meeting of the History Society will be on Tuesday **12th November**, 7pm for a 7.30pm start. Our speaker will be Phil Huntley - "New Moor House Edlingham, a crossroad across time". Romans, drove roads, inns and toll gate routes around it.

Light refreshments available from 7pm, all welcome.

LOCAL EVENTS



Warm Space Coffee Mornings!

Please come along and join us for a coffee or tea, cheese scone, great conversation and good company.

We're open **every Wednesday morning**,
10am to 12 noon, in **Longhorsley Village Hall**.

We'd love to see you, everyone welcome, and it's all free!!



British Legion Poppy Appeal Coffee Morning



Saturday **2nd November** from 10am
at St. Helen's Church

Drop in for a warming drink - All are welcome
Raffle - Bring and Buy Stall - Cakes - Books
Donations would be appreciated



Joy of Christmas Fair

Sat/Sun **2nd & 3rd November**
Linden Hall, 10am-4pm



Over 70 stands selling Arts, Crafts, Food and Unique gifts.
Entry: £3.50, includes glass of mulled wine. Tickets: scan the QR code.



Come and join us!!

Cocoa Club is a brand new after school club
for 8-13 year olds

Come and join us for a hot chocolate, biscuits and games every other
Wednesday from 4.15pm until 5.15pm at Longhorsley Village Hall.

If your child would like to attend, please contact:
longhorsleyvillagesocialevents@gmail.com
and you will be sent a Google Form to complete.

Starting Wednesday 6th November 2024
(If demand is great enough, we can run it weekly)

The club will be run by two enhanced DBS checked people.

More info: An example of games available to play are Dobble, Uno,
Guess in 10, Jenga, pop up pirate, Guess Who....

DONATIONS OF GAMES GREATLY APPRECIATED!

LOCAL EVENTS



Quiz Night in the Shoulder of Mutton

Thursday **7th November** at 7pm for 7.30pm start
Entry: £3 per person. Raffle donations welcome.

Raising Funds for the Toby Henderson Trust

An independently funded charity supporting autistic children, young people, adults, their families and carers in the North of England.



**Longhorsley
Village Hall**

Drummonds Close, Longhorsley, NE65 8UR

Coffee Morning

We're raising funds for a new heating boiler!

Saturday **9th November**, 10am - 12noon

RAFFLE - Donations VERY Welcome!



“Fun with Flowers”



Longhorsley Village Hall
Friday **15th November**, 2.30 - 4pm

Everyone welcome. Please book your place by emailing
Olive ✉ olivelight72@gmail.com or phone ☎ **07907 714455**
£5 each, which includes refreshments
No experience necessary

highlights
rural touring scheme

and Wingates Village Institute Hall present

A Lupton, S Cook and K Waymouth, Tuesday 19th Nov, 7.30pm



An exciting award winning Canadian trio performing a glorious mix of beautiful story songs, electrifying fiddle tunes and dazzling step dance.

Tickets: Adult £12, Child £8 (Highlights - see below)

Info and bookings from: ✉ famelton@rothbury.net, ☎ **01669 620512**
and also online (for a small extra fee) from 🌐 www.highlightsnorth.co.uk

LOCAL EVENTS



Cafe at 4

St. Helen's Church, Longhorsley

Sunday 17th November at 4pm

An informal time for all ages.

As we look forward to Advent, come and help us decorate our lovely Christmas Tree, and make a stained glass lantern to take home.

Tea/coffee/squash/cake/healthy snacks etc (gf available)

Stories - Songs - Action - Crafts - Fun

All free. Donations to the Wansbeck Food Bank welcome

Wingates Village Institute

Would like to invite you to the

AGM Friday 22nd Nov 2024 at 7pm

to be held at the institute NE65 8RW.

Doors open at 6.30pm, with a free drink to those who attend, everyone welcome. The main purpose of the business is to report on this year's activities and to appoint next year's committee.

Hope to see you there.



**Longhorsley
Village Hall**

Drummonds Close, Longhorsley, NE65 8UR

**Do you run a group or organisation
that you'd like to bring to Longhorsley
on a regular basis?**

We're looking for more groups and members of the public to use our Village Hall.

A list of some suggestions are:-

Weight Management/Slimming Groups, Yoga/Zumba/Street Dance, Young Farmers Club Meetings, Sports Activities/Taekwondo/Karate, Bridge/Chess, Weddings/Baby Showers/Funeral Wakes, Children's Parties/Family Gatherings, Meetings/Medical Clinics

If you would like to book or require more information, please e-mail longhorsley.hall@gmail.com

Car Parking * Kitchen Facilities * Main Hall * Side Room

LOCAL EVENTS



**Longhorsley
Village Hall**

Drummonds Close, Longhorsley, NE65 8UR

Future Events in the Village Hall

Sat 9th November	Coffee Morning (to raise funds for new hall boiler) 10am - 12 noon
Fri 29th November	Wine Tasting, 7pm - Limited Availability £20 pp - booking essential
Wed 4th December	Christmas Quiz, 7pm for 7.30pm start At Shoulder of Mutton
Sat 7th December	Wreath Making, 2pm £30 pp - booking essential



Stars for Loved Ones

Put the name of a loved one on a star and the School PTA will laminate it and hang it on the village Christmas Tree. Only £1 at the Village Hall until Thursday **28th November**. The PTA are raising money to develop the outside space so the children can use it in all weathers, getting lots of exercise and fresh air.
Thank you for your support, Longhorsley PTA.

The Longhorsley Masquerade Ball

Last chance to buy tickets for this year's Longhorsley Ball. Start the festive season on Saturday **7th December** at Linden Hall, 6.30pm to 1am.

Glass of fizz on arrival, 3 course sit down dinner, raffle, dancing to live music from Shakedown, disco.

Come and support this local event - all profit is donated back to local causes including the first school, church, junior football club, and playgroup. The more we raise, the more we give back! Tickets £55pp.

Please contact **Lizzy** ☎ **07595 909510**, **Karen** ☎ **07803 603376** or **Clare** ☎ **07825 291806** by mid November to buy.



St Thomas Catholic Church

Every Monday and Thursday - Mass at 12noon

Every Sunday - Mass at 11.15am

✉ longhorsley.stthomas@rcdhn.org.uk

🌐 www.stthomaslonghorsley.com

Longhorsley Village Hall Sweepstake - September Winners

1st Prize	£50	Mr N Cunningham	3rd Prize	£15	Glyn Scott
2nd Prize	£25	Michael Hall	4th Prize	£10	Marian Chilvers

There are still some spare numbers left in the sweepstake. If you would like to take part, or even take out another number, then please get in touch with **Garry** or **Janice Ritchie** ☎ **07713 583311** ✉ garry7256@aol.com

TAKEAWAY FOOD IN LONGHORSLEY

The Shoulder of Mutton is open and offering takeaways every day
 Sunday lunches 12 - 6pm ~ Monday to Saturday 5 - 8pm
 See their menu at 🌐 shoulderofmuttonpub.com ~ phone 788236 to order

The Flying Fryer every **Friday** from 4pm - 7pm, or later.
 Facebook [The Flying Fryer](https://www.facebook.com/TheFlyingFryer) ☎ 07984 426 725

Dou_h&co visits on one **Thursday** in the month from 4.30pm - 7.30pm
 The next visit date is **14th November**.
 Pre-order on ☎ 07507 834 628 from Monday 9am.
 See their menu on 🌐 dou-h.co.uk, Instagram or Facebook [Dou_h & Co](https://www.facebook.com/Dou_h_Co).

X14 Bus Time Changes From Sunday 3rd November

There are no changes to the Longhorsley bus times. However a number of services will **no longer** stop at Cragside, listed below. These changes reflect Cragside's winter opening times.

From Cragside: Mon-Fri 17.33, Sat 16.28 and 17.38, Sun 16.48

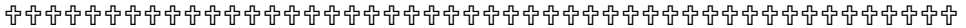
To Cragside: Mon-Sat: no change, Sun 9.35

All times are from Longhorsley Green.

St Helen's Church

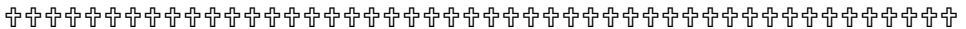
Sunday Service:

- 10am Holy Communion
(1st Sunday of month)
- 10.30am Holy Communion at **Netherwiton**
(3rd Sunday of month)
- 10am Morning Prayer
(2nd, 4th and 5th Sundays)



PCC Meeting

The next meeting of the PCC is on **22nd January 2025**.



St Helen's Contact Details

During the Interregnum the Area Dean will be responsible for the Parish.

Rev. Chris Grocock ☎ **01670 813358** 🌐 www.achurchnearyou.com

Thought for the Month - Remembrance

Remembrance is a profound act that transcends time, connecting us to our past while shaping our understanding of the present and future. It serves as a reminder of the sacrifices made by countless individuals, often in the name of duty, love, and freedom. Whether commemorating fallen soldiers, honouring ancestors, or recalling personal milestones, remembrance carries a weight that invites us to reflect deeply on our shared humanity.



One of the most poignant aspects of remembrance is its ability to foster empathy. When we pause to remember, we engage not only with historical events but also with the emotions and stories of those who lived through them. Each name inscribed on a memorial, each photograph held in a family album, represents a life filled with dreams, struggles, and triumphs.

In commemorating events such as wars or social movements, we are compelled to confront the darker aspects of our history. This reflection can be uncomfortable, as it forces us to acknowledge injustice, suffering, and loss. However, it can allow us to grow. By facing these truths, we cultivate a collective responsibility to honour those who endured by striving for a better future. This is particularly relevant today as we think about global challenges.

On a personal level, remembrance often serves as a source of comfort. Recalling cherished moments with loved ones, whether joyous or bittersweet, allows us to celebrate their influence on our lives. Memories can be powerful anchors in a world that often feels chaotic. They remind us of who we are, our values, and the connections that sustain us. In times of grief, remembering can also provide solace, as we find ways to keep the essence of those, we've lost alive in our hearts.

As we gather this month in Longhorsley at the village green we may realise this act of remembrance is also inherently communal. This communal aspect fosters solidarity, as we come together to recognize our shared history and its impact on our identities. Church is a community where remembrance plays a vital role. The Christian Eucharist, often called Communion, is a special time when we remember Jesus and what He did for us. This time of remembrance is a sacred act that invites us to reflect on Jesus' sacrifice on the cross, allowing His love and grace to transform our hearts and guide our lives.

In a rapidly changing world, where the pace of life often accelerates, the importance of remembrance cannot be overstated. It invites us to slow down, reflect, and engage with our history - both personal and collective. Ultimately, remembrance is not just about looking back; it is about using our reflections to illuminate the path forward. So that we can build a world and community rooted in love, compassion and respect for every human being.

In fields of honour, silence falls,
We gather, hear the calls.
For those who fought, both brave and true,
Their sacrifices, we remember you.

Diane Armstrong, St Helen's Longhorsley



Longhorsley Mission Free Church Sunday Services:

11am Family Service and Sunday School

Other Sunday services by arrangement, information thereof being available from our Contact below.

For our other group meetings, please see the Group Activities sections. Visitors are always very welcome to all our events.

Contact **Ian Pagan** ☎ **788263** ✉ idpagan@btinternet.com

Website: www.longhorsleymission.org.uk

THANKS

Macmillan Coffee Morning

Huge thanks to everyone who attended the Macmillan Coffee morning. It was so lovely to have a full hall, everyone enjoying the coffee, cheese scones and cakes, and all for an excellent cause.

We raised just over £500 for this very worthwhile cause, which is fantastic, so thank you so much! **Anne and Jane**

SUPPORT LOCAL BUSINESS



Enquiry form

Emma Rutherford

Your local independent travel agent

01670 720022

emma.rutherford@mytc.com



Expert travel guidance
Personal caring service
ATOL & 100% financial
protection

@emmarutherfordtravelcounsellor

@emmastravelescapes



NORTHUMBERLAND PEST CONTROL

Fully licensed and insured pest and vermin control.
Moles, rodents, rabbits, wasps and other insects.

Residential / Agricultural / Estate / Commercial

Contact Rory Brotherton 788174 or 07769 176666

info@northumberlandpestcontrol.co.uk

www.northumberlandpestcontrol.co.uk and [facebook](#)



LONGSTAFF TREE SURGERY

Ian Longstaff, Rothbury, Northumberland

FREE SURVEY & QUOTES – COMPETITIVE PRICES

07528 744 011 or 01669 504 060

ilongstaff2002@gmail.com

Longstaff Tree Surgery

www.LongstaffTreeSurgery.com

SUPPORT LOCAL BUSINESS



Serving good food to eat-in or take-out

Monday to Thursday: 12-3pm and 5-8pm
Friday/Saturday: 12-9pm and Sunday: 12-6pm

 www.shoulderofmuttonpub.com

 The Shoulder of Mutton



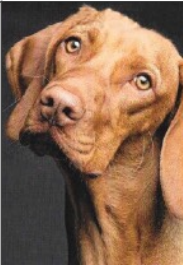
Make it a Magical
Christmas

CHRISTMAS PARTY NIGHTS
6th, 13th & 14th December

NEW YEARS EVE BLACK-TIE GALA DINNER
31st December

specialevents.linden@macdonald-hotels.co.uk

THE LINDEN & TREE | Linden Hall Hotel
Golf & Spa



Helen's House and Pet Sitting **Friendly Tailored Service - Local - Professional**

Experienced and reliable pet and house sitter
Also able to help with horses, ponies and smallholdings
Fully insured with references available

 **07940 809725**  helen.e.arco@gmail.com



Atom Intruder Alarms

Commercial & Domestic Security Systems
Alarm and CCTV
Installation & Maintenance

For a free, no obligation quote contact

Mark Ingram  0191 4283404

 07860 471000  mark@atomalarms.co.uk

SUPPORT LOCAL BUSINESS



Now is a good time to make a Will

Protect your estate from

- The tax man
- Care fees
- New partners

Maximise what
you leave your
loved ones

Northland Wills
Trusts & Probate
01670 788200

FREE consultations in
your home OR over Zoom

Specialists in Wills, Trusts,
Probate & Powers of Attorney



Morpeth Carpet Cleaning

Carpet Cleaning ~ Upholstery Cleaning
Stain Removal & Protection ~ Free Estimates

Professional Carpet & Upholstery Cleaning | Newgate Street, Morpeth
Call Simon on 07506622680 or email info@afrcarpetcleaning.co.uk



STEPHENSONS GARAGE

MOT
Centre

Servicing & Repair
Tyres, Batteries & Exhausts
We only use approved parts
Trustworthy, high quality work
Office ☎ 01670 788611
Mobile ☎ 07710 829437

✉ stephensonsgarage@gmail.com

GreenThumb
LAWN TREATMENT SERVICE



Green Thumb

The leading lawn care specialists in the UK.
We offer a free, no obligation, lawn analysis
to assess your lawn's condition.

Prices from just £15 per treatment

Call us now on ☎ 0191 488 6202

✉ newcastle@greenthumb.co.uk