



Longhorsley Tree

The newsletter for the Parish of St Helen's
September 2024 Issue 127

Newsletter website:

sites.google.com/site/LonghorsleyTree
or tinyurl.com/LonghorsleyTree
or Google "Longhorsley Tree"

September Tweets along Archie's Pond

As the season of Autumn progresses many birds become much more easily seen as they complete their moult and there is less foliage to hide behind. It is the last chance to see the warbler species such as Chiffchaff, Blackcap and Willow Warbler, as they move southwards on their migration. On fine days Chiffchaff will still sing. Blackbirds also begin to be visible in greater numbers, as they become less skulking and more arrive from further north. Robins will be bolder and more numerous and will try and establish their "patch" for the winter. They will sing too, but without the volume and vigour of their spring song.

As December approaches, you may be lucky and encounter a busy flock of small birds. They will usually have Coal, Great and Blue Tits, some Finches, and hopefully Treecreepers and Goldcrests. The latter two you are unlikely to see in your garden unless you have some mature trees nearby. Just stand still and see what joins in. The local birds such as Dunnock, Wren and Robin will join in the activity but remain behind as the flock progresses. These mixed species feeding flocks can be seen in hedgerows and woodlands all around the village, and indeed in forests throughout Europe and the world, temperate or tropical.

Andrew Brunt ☎ **788352**

For more information about birds in Northumberland, visit the Northumberland and Tyneside Bird Club website at www.ntbc.org.uk

October Edition - The last date for submissions is **20th September**.
Jan and Sheena Haveman 07834 740649 longhorsley.tree@gmail.com
For a larger print version please contact **Olive** on **07907 714455**.

The **Longhorsley Tree** is edited and delivered by a team of volunteers organised by St Helen's Church. We are indebted to Longhorsley Parish Council for funding the publication.

Longhorsley Parish Council

The next Parish Council meeting will be held on Wednesday, **11th September**, in the Village Hall, starting at 7pm, with a parishioner slot at 8pm. Meeting notices are displayed on village notice boards, with minutes and other information found on the Parish Council website at:

northumberlandparishes.uk/longhorsley

Contact details for the current members are detailed below:

Clerk: Gillian Turner, 4 Lowther Close, Seaton Manor, Ashington, NE63 0HY
☎ **01670 812704** or ✉ parishclerk@longhorsley-pc.gov.uk

Chairman: Norman Douglas ☎ **07485 174529**

✉ norman.douglas@longhorsley-pc.gov.uk

Councillors: Sarah Alcock, Kirsty Bell, Peter Boyle, Jennie Parker, Anne Peat and Trevor Potts.

CCTV System

We are looking into extending and upgrading the current CCTV system operating in the Village, to cover additional areas such as the newly refurbished Church View play area.

Church View Play Area

A replacement balance beam has been recently installed on site and an additional hopscotch infill will be added to the surfacing over the summer.

Old Church Entrance Improvements

The access to the Old Church has been the subject of concern and discussion within the parish for some time. Getting into and out of the site is a safety hazard for a number of reasons:

- Firstly, the entrance off the A697 is very difficult to see, even if you know where it is, when travelling from the North in particular. It is also very difficult to leave the site because the traffic to the North is obscured by the overgrown tree line. This restricted visibility makes it dangerous for those trying to pull off the road to enter the track as well as for those trying to leave it. This not only impacts those attending funerals but also those people trying to visit graves.
- The current “throat” access point is too narrow and does not provide sufficient run in from the A697 to get a funeral cortege off road and safely away from oncoming traffic.
- There is no indication to motorists to make allowance for the Old Church junction. We would like to see road signage, including a change to the double centre white line outside of the track, to give motorists sufficient warning of the entrance.

We are currently speaking to Northumberland County Council to determine what improvements can be made to improve road safety connected not only with access and egress but also generally on this stretch of the carriageway.

Creation of the Allotment Community Area

You may have noticed the new Community Area created on the allotment site? Our thanks go to the Wingates Wind Farm Community Fund for the grant which enabled us to carry out this work. Our thanks also go to Cllr Peter Boyle, who worked tirelessly to erect the summerhouse and make all of the land preparations too.



Allotments

One of the allotments in the village is about to become available. There is currently no waiting list and so, anybody within the Parish that is interested should contact the Parish Clerk.

Your County Councillor

As students wait for their exam results they can all be proud of helping to get the Northumberland's Ofsted schools ratings into the top quartile for schools in England - this is a very big improvement over the years where we were once in the lower quartile. Thanks to teachers and to the County Hall team who have just been judged "Outstanding" for Childrens Services. This is a very special rating which few Councils manage to achieve.

To keep this momentum the County Council are building three new "superschools" in Seaton Valley, Amble and Berwick, and putting new money into KEVI.

As always if I can help with any Council issues please let me know.

Glen Sanderson 07730 979737 glen.sanderson@northumberland.gov.uk

Longhorsley Village Hall Sweepstake					
July Winners					
1st Prize	£50	Mrs Alcock	3rd Prize	£15	David Stephenson
2nd Prize	£25	Peter Blake	4th Prize	£10	Rosemary Clark
August Winners					
1st Prize	£50	Kate & Craig	3rd Prize	£15	Linda Dean
2nd Prize	£25	Val Douglas	4th Prize	£10	Patricia Forster
There are still some spare numbers left in the sweepstake. If you would like to take part, or even take out another number, then please get in touch with Garry or Janice Ritchie ☎ 07713 583311 ✉ garry7256@aol.com					

GROUP ACTIVITIES

Toddlers' Group		Every Thu	9.15am-11am	L'horsley V Hall	Term-time	Joanna Reilly 07739 321737
Mission Baby & Toddler Group		Every Tue	9.30am-11.30am	Mission	Term-time	Win Pagan 788263
Bible Club		Every Fri	3.15pm-4.30pm	Mission	Term-time	Ian Neilly 01670 518202
Longhorsley Explorers		Every Mon-Thu	7.30am-6pm	L'horsley V Hall	Term-time	07522 486910 07522 486953
		Every Fri	7.30am-1.30pm			
Junior Football Club	U8's	Every Tue	6pm-7pm	MUGA	Oct-Apr Note: May-Sep on the Common	Steven Dick 07803 026786 Ben McMorrow 07970 840587 Andrew Archibald 07810 115152
	U6's		5pm-6pm			
	U9's		6pm-7pm			
	U12's Giras		7pm-8pm			
	U7's	Every Wed	5pm-6pm			
	U11's		6pm-7pm			
	U13's		7pm-8pm			
	U8's	Every Thu	5pm-6pm			
	U12's Zebs		6pm-7pm			
U14's	7pm-8pm					
Longhorsley Carpet Bowls		Every Mon	7pm-9pm	L'horsley V Hall	Sept-June	Olive Light 07907 714455
Wingates Carpet Bowls		Every Wed	7.30pm	Wingates V I Hall	Sept-Mar	Heather 01670 778413
Wingates Bridge Club		Every Tue	7.30pm-9.30pm	Wingates V I Hall		Robert Famelton 01669 620512
Wingates Reading Group		2nd Thu	7.30pm	WG/NW V Halls		
Embroidery Group		1st Fri	2pm	L'horsley V Hall	6th Sept	Val Douglas 07483 233074
Art Group		2nd, 4th Fri	2pm-4pm	L'horsley V Hall	13th Sept 27th Sept	Val Douglas 07483 233074
Local History Society		2nd Tue alt months	7.30pm	L'horsley V Hall	10th Sept	Derek Knox 788329
St Helen's Coffee Morning		1st Sat	10am	St Helen's Church	7th Sept	Mary Stephenson 788232
Wildlife Trust		1st Mon	7.30pm	Jubilee Rothbury	2nd Sept	Conrad Chilvers 788351
Longhorsley WI		1st Thu	7.30pm	L'horsley V Hall	5th Sept	Audrey Wiggins 788692

Women Together	Every Thu	10.45am-12pm	Mission		Win Pagan 788263
Christian Vision for Men	Last Sat	8.30am	Anglers Arms	28th Sept	Jim Cockburn 510130
Walking Group	1st Mon 3rd Thu	10am	Start of walk	See below	Jan & Sheena 07801 005634
Keep Fit Class	Every Mon	9.15am-10.15am	L'horsley V Hall		Mary Stephenson 788232
Adult 5-a-side	Every Sun	6.30-7pm	MUGA or Common		Steven Bates 07793 888 311
Ladies Lunch Group	Every Month	Lunch time	Varies	19th Sept	Frances Murphy 07909 992046
Warm Space	Every Wed	10am-12pm	L'horsley V Hall		Jane Pringle 07729 182511

Walking Group

The walks are usually 4 to 6 miles long and it's a good idea to bring a drink and energy snack on the walk. Our first walk in August had beautiful weather and good views of the heather in bloom around Rothbury.

The next upcoming walks are:

Monday **2nd September**: Elsdon, led by Leigh and Neil ☎️ **787115**.

Thursday **19th September**: Ingram, led by Sheena and Jan.

New walkers are always welcome. For more information please contact **Sheena & Jan** ☎️ **07801 005634**



Longhorsley WI

After enjoying a Summer Outing and a Picnic in August, our next Meeting will be on Thursday **5th September** at 7.30pm in the Village Hall. We are looking forward to welcoming Gerry Tierney, a Magistrate with many years of experience, representing The Magistrates Association.

Visitors would be very welcome to join us to hear what should be a very interesting talk. For any information contact:

Audrey Wiggins, Secretary ☎️ **788692** or ✉️ swigginsa@btinternet.com

Keep Fit Class

We continue to exercise in the Village Hall on Monday mornings, between 9.15 and 10.15am. New members are most welcome.

Shirley Forster is our Instructor and sessions are in conjunction with Age UK.

Mary Stephenson ☎️ **788232**

GROUP ACTIVITIES

Northumberland Wildlife Trust - Coquetdale Group

We meet on the first Monday of each month from September to April at the Jubilee Hall, Rothbury. Outings/visits are organised in the summer months.

Guests are very welcome and a fee of £4 is charged. Doors open at 7pm with tea and coffee available for a small donation.

Monday **2nd September** at 7.30pm: Philip Munro will talk about "The South of Scotland Golden Eagle Project".

Monday **7th October** at 7.30pm: Peter Matthewson will talk about "Creating the Private Nature Reserve in Morpeth, Clarks Bog".

Contact **Conrad Chilvers** ☎ **788351**.

Christian Vision for Men

The Christian Vision for Men group has monthly breakfasts at the Angler's Arms. Our next breakfast will be on Saturday **28th September** at 8.30am. Our speaker that morning will be one of our own members, Ian Dunsire. The title of Ian's talk is "God at Work". He will be speaking about his experience in the Middle East and South-East Asia.

The charge for those attending the breakfast is £11 (cash only).

For more information and to book a place, please contact

Jim Cockburn on ☎ **01670 510130** or ✉ jim.cockburn@btinternet.com

St. Helen's Coffee Morning

Our next Coffee Morning will be held on Saturday **7th September** at 10am in St. Helen's Church.

There will be a raffle and stall as usual. All are welcome.



Mary Stephenson ☎ **788232**

Longhorsley Indoor Bowls Club

After a summer break we meet again on Monday **30th September** 7pm in the Village Hall. No experience necessary. Come and see what it's all about.

For more information email the secretary, Olive, olivelight72@gmail.com.

Ladies Lunch Group

The next Ladies Lunch will be at The Old Boat House in Amble at 12.30pm on the **19th September**.

Could those intending to come please let me know at

✉ francesmurphy48@gmail.com, and copy to ✉ olivelight72@gmail.com

GROUP ACTIVITIES

Longhorsley Local History Society

Longhorsley Local History Society will be starting the new season of talks on Tuesday **10th September**. The speaker will be Neil Storey on “Newcastle Battalions in Action on the Somme”.

The talk will start at 7.30pm in the Village Hall and doors will be open from 7pm for light refreshments.

All are welcome, annual membership will be £10 individual / £15 joint or a small charge per meeting. Future speakers:

Tuesday 12th November - Phil Huntly - New Moor House, Edlingham

Tuesday 14th January - Open evening

Penny Ford, Chairman

LIST OF VILLAGE DAY TROPHIES AND WINNERS INDUSTRIAL SECTION 2024

Section/Class	For	Winner
1 Floral Art	Most points section 1	Olive Light
2 Flowers, Fruit and Veg	Most points in section 2	Kevin Woods
	Best exhibit section 2	Olive Light
3 Cookery	Most points	Julia Coomber
	Most outstanding exhibit	Julia Coomber
4 Arts and Handicraft	Most points	Val Douglas
	Most outstanding exhibit	Val Douglas
5 Childrens		
A 1-4 years	Most points 5A	Arthur Gray
	Best in 5A	Zac Pickup
B 5-9 years	Most points 5B	Noah Taylor
	Best 5B	Sophia Meagher
C 10-13 years	Most points 5C	Not Awarded
	Best 5C	Not Awarded
Best Allotment		Rob and Nicky Murdoch
Best Garden		Ben and Sarah Alcock
Best Scarecrow		Atkinson Family, Smallburn Road
Maureen Taylor Short Story Competition		Emilia Turnbull Angharad Gunn
Overall Show Winner	Most points in adult section	Kevin Woods

LOCAL EVENTS



Warm Space Coffee Mornings!

After a small break in August the Warm Space coffee mornings return on Wednesday **4th September**, 10am to 12 noon in the Village Hall.

Anne Peat and Jane would love to see all our regulars back again, plus anyone who would like to pop along. It is such a lovely morning, enjoyed by many in the village. Open to anyone and everyone, there will always be the warmest of welcomes into the hall. Come and enjoy a coffee, cheese scones and great conversation - such a lovely atmosphere!

Looking forward to seeing you all then, **Jane and Anne**

Big Sky Music Night

Longhorsley Village Hall

Saturday **7th September** at 7pm

£10 per adult, children free

BYOB - Pooled Supper - Tea/Coffee/Juice Available

Book in advance

✉ Longhorsleyvillagesocialevents@gmail.com



“Fun with Flowers”

Longhorsley Village Hall

Friday **20th September**, 2.30 - 4pm



Everyone welcome. Please book your place by emailing **Olive** ✉ olivelight72@gmail.com or phone ☎ **07907 714455** £5 each, which includes demonstration and refreshments. Come and try something new!

The Longhorsley Masquerade Ball

This year's Ball is on Saturday **7th December** at Linden Hall. Tickets are £55pp to include a glass of fizz, three course dinner, close up magician, the wonderful band Shakedown, followed by a disco.

Tickets are on sale now, so please do get in touch!

Lizzy Prescott ☎ **07595 909510**, **Karen Fish** ☎ **07803 603376**
and **Clare Percy** ☎ **07825 291806**

LOCAL EVENTS

highlights and Wingates Village Institute Hall present
rural touring scheme

Carpet Bowls restarting on **4th September** at 7.30pm

Quiz Night with Heather as our quiz master on Saturday **21st September** at 7.30pm, bar and pooled supper.

Forever Yung Dance. Latin and Ballroom classes restarting Monday nights. Contact Ken ✉ yungdance@icloud.com or see Facebook.

Needle Felted Herdwick Sheep, Sunday **15th September**, 11am



Create your own delightful needle felted Herdwick sheep (or other breeds) with artist Claire Priestley. This workshop is suitable for beginners, as well as those wishing to refine their felting skills. All materials and equipment included.
Tickets: Adult £35 (Highlights - see below)

Set Menu: The Best of George Egg, Tuesday **22nd October**, 7.30pm



Comic chef, food prepared in unusual ways with the chance to sample. It's time for the funniest recipes and the most delicious jokes!
Tickets: Adult £12, Child £8 (Highlights - see below)

A Lupton, S Cook and K Waymouth, Tuesday **19th Nov**, 7.30pm



An exciting award winning Canadian trio performing a glorious mix of beautiful story songs, electrifying fiddle tunes and dazzling step dance.
Tickets: Adult £12, Child £8 (Highlights - see below)

Info and bookings from: ✉ famelton@rothbury.net, ☎ **01669 620512**
and also online (for a small extra fee) from 🌐 www.highlightsnorth.co.uk



Saturday 12th October

A torch-lit 6km fully marshalled route
up Humbleton Hill



Light up the Glendale Night Guided Walk

Registration at Cheviot Centre, Wooler, at 5.30pm
£10 Adult, £5 Child (Sponsorship per family £25)
Scan the QR code, or telephone

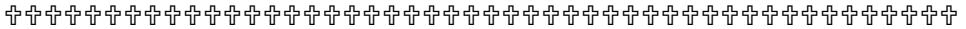
01665 606515 or **01289 309997** for more information



St Helen's Church

Sunday Service:

- 10am Holy Communion
(1st Sunday of month)
- 10.30am Holy Communion at **Netherwitton**
(3rd Sunday of month)
- 10am Morning Prayer
(2nd, 4th and 5th Sundays)

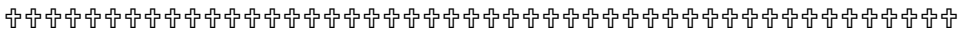


Services in September

- | | | |
|-------------|---|---------|
| 1st | Holy Communion | 10am |
| 8th | Morning worship | 10am |
| 15th | Coffee and prayer in Longhorsley | 10am |
| 15th | Holy Communion at Netherwitton St. Giles
Please meet at St. Helen's Church at 10am if
you need transport, or if you can offer transport. | 10.30am |
| 22nd & 29th | Morning worship | 10am |

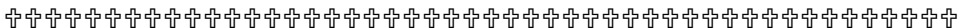
Refreshments served after the Service. Everyone is welcome.

PLEASE NOTE - From the 15th September, there will not be a Service at St. Helen's Church on the third Sunday of the month. We will be worshipping at St. Giles, Netherwitton, at 10.30am on this and subsequent third Sundays, for service of Holy Communion.



PCC Meeting

The next meeting of the PCC is on Wednesday **25th September** at 7.00pm with a parishioner slot at 7.30pm.



St Helen's Contact Details

During the Interregnum the Area Dean will be responsible for the Parish.
 Rev. Chris Grocock ☎ **01670 813358** 🌐 www.achurchnearyou.com

Mobile Library Visiting Times

The Mobile Library visits Longhorsley once a month, usually on Fridays between 3pm and 4pm, in the Village Hall car park.
 This September the van will visit on a **Monday** due to holiday.
 The next visits will be on the **16th September** and **18th October**.



St Thomas Catholic Church

Every Monday and Thursday - Mass at 12noon

Every Sunday - Mass at 11.15am

✉ longhorsley.stthomas@rcdhn.org.uk

🌐 www.stthomaslonghorsley.com

Thought for the Month

Dear family,

As we come to the end of August we celebrate our one year anniversary since the Spiritans (Holy Ghost Fathers) arrived in Northumberland. We are working in the two parishes of St Aidan's, Ashington and St Thomas of Canterbury, Longhorsley. For our history we share our mission with those we work with. We are a religious congregation with a pontifical right. We live in a community. We accept work for which the church finds it difficult to get workers.

At the moment we work in parishes, as chaplains in hospitals, in prison ministry and youth ministry. We also work with refugees and asylum seekers, with inter-religious dialogue, issues of justice and peace and the integration of creation. Our superior in England is referred to as Provincial Superior. He makes contact and contracts with the local churches, especially with the bishops. We are grateful to the Diocese of Hexham and Newcastle for giving us a place to share our charism and apostleship.

We have not only been here in Northumberland. Before we came to Ashington and Longhorsley we served for two years in the diocese in the Washington and Peshaw area. Therefore, we have now been three years in the diocese of Hexham and Newcastle. We thank the Bishop for his support. We thank the Vicar General and all the priests in the diocese.

To our family in Longhorsley and Ashington we wish to thank you for your strong and unwavering faith. We wish to encourage all to protect our common home, the earth. We are in a very beautiful area. We need to keep our environment free of garbage and take care of the elderly and weak.

In September we will start a second year locally. We wish to deepen our commitment to hospital and prison ministries. We call on everyone to continue to support our ministry as Spiritans (Holy Ghost Fathers).

Fr. Ascensio Vincent Waiga CSSp



Longhorsley Mission Free Church Sunday Services:

11am Family Service and Sunday School

Other Sunday services by arrangement, information thereof being available from our Contact below.

For our other group meetings, please see the Group Activities sections. Visitors are always very welcome to all our events.

Contact **Ian Pagan** ☎ **788263** ✉ idpagan@btinternet.com

Website: www.longhorsleymission.org.uk

Northern Ark Autumn Update

We've travelled all over the North East this summer with Northern Ark Nursery and Hedgeley Honey. Stints at Alnwick have joined our usual Saturday markets at Morpeth, Kelso and Hexham. You'll also find us at county shows through September - check our website www.northernarknursery.co.uk and Facebook page for details. As ever, the nursery is open Thursday-Saturday from 11am - 4pm.



Essential jobs to do in the garden in early autumn:

- Catch earwigs in upturned pots crammed with newspaper or straw on canes among dahlias and destroy any you find.
- Prepare soil to plant evergreen shrubs and conifers by digging it over and incorporating lots of organic matter.
- Prune rambling roses, removing shoots that have finished flowering.
- Plant conifers, shrubs and hedging.
- Buy spring-flowering bulbs like tulips, crocuses, narcissus and fritillaries.
- Remove suckers from roses, shrubs and around the base of trees.
- Pot up herbs, such as tarragon, to use in winter.
- Divide any overgrown or tired-looking clumps of alpines and herbaceous perennials. This will invigorate them, and improve flowering and overall shape, for next year.
- Some tall-flowering perennials, such as asters, may still need staking to stop them from being blown over.

At Hedgeley Honey the bees have been busy pollinating the borage crops in Yorkshire and East Anglia, resulting in some long days of driving for us. The weather for this has been really good, making up for the very poor start to the year. The bees have brought in a good borage crop this year: a lovely light, sweet, mild honey.

Our other bees in Northumberland are now all on the heather moors. Hopefully, in the warm days we have had, they will have been bringing in the dark caramel tasting ling heather honey.

By the end of September all the bees will be back in Northumberland, in their winter apiaries being made ready for winter.

For more information on our online shop and stockists, visit www.hedgeleyhoney.co.uk.

Longhorsley Village Fete

On behalf of the Fete committee, we would like to say a huge thank you to everyone who came along and supported our first village Fete for several years. Despite the awful weather, we had a brilliant day. It was fantastic to see so many people out and about, having a great time. It certainly made all the hard work leading up to the Fete worthwhile.

Also huge thanks to everyone who kindly gave prizes, rosettes, volunteering their time and judging expertise - we could not have managed without you all, thank you so much.

We also raised some money, which will give us a great platform to start financing next years Fete. We have decided to donate some of the money to local groups as well as a charitable donation. If anyone has any suggestions regarding this donation, please email them to the fete committee ✉ longhorsleyfete@gmail.com. A decision will be made regarding the recipient of the donation at our AGM.

The AGM will be held on Tuesday **17th September**, 7.00pm in the Village Hall. Everyone is welcome to come along.

Once again many thanks to all who supported our wonderful Fete day!
Till next year!

TAKEAWAY FOOD IN LONGHORSLEY

The Shoulder of Mutton is open and offering takeaways every day

Sunday lunches 12 - 6pm ~ Monday to Saturday 5 - 8pm

See their menu at shoulderofmuttonpub.com ~ phone 788236 to order

The Flying Fryer every **Friday** from 4pm - 7pm, or later.

Facebook [The Flying Fryer](#) ☎ 07984 426 725

Dou_h&co visits on one **Thursday** in the month from 4.30pm - 7.30pm

Pre-order on ☎ 07507 834 628 from Monday 9am.

See their menu on dou-h.co.uk, Instagram or Facebook [Dou_h & Co.](#)

Post Office in Longhorsley Village Hall

Mon 9.15am - 11.30am ~ Fri 11.30am - 1.30pm

Please note the change to the operating hours on Monday.

The Post Office has been very quiet lately and Head Office have contemplated closing outreaches due to cost/lack of business.

The reduced hours will hopefully suffice going forward.

Please note that this Outreach Service cannot accept large parcels.

SUPPORT LOCAL BUSINESS

LONGSTAFF TREE SURGERY

Ian Longstaff, Rothbury, Northumberland

FREE SURVEY & QUOTES – COMPETITIVE PRICES

☎ 07528 744 011 or 01669 504 060

✉ ilongstaff2002@gmail.com

📘 Longstaff Tree Surgery

🌐 www.LongstaffTreeSurgery.com



NORTHUMBERLAND PEST CONTROL

NORTHUMBERLAND PEST CONTROL

Fully licensed and insured pest and vermin control.
Moles, rodents, rabbits, wasps and other insects.

Residential / Agricultural / Estate / Commercial

Contact Rory Brotherton ☎ 788174 or 07769 176666

✉ info@northumberlandpestcontrol.co.uk

🌐 www.northumberlandpestcontrol.co.uk and facebook



Enquiry form

Emma Rutherford

Your local independent travel agent

01670 720022

emma.rutherford@mytc.com



Expert travel guidance
Personal caring service
ATOL & 100% financial
protection

📘 @emmarutherfordtravelcounsellor

📷 @emmastravelescapes



SUPPORT LOCAL BUSINESS



Serving good food to eat-in or take-out

Monday to Thursday: 12-3pm and 5-8pm
Friday/Saturday: 12-9pm and Sunday: 12-6pm

 www.shoulderofmuttonpub.com

 The Shoulder of Mutton



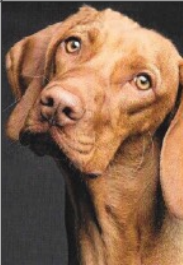
Atom Intruder Alarms

Commercial & Domestic Security Systems
Alarm and CCTV
Installation & Maintenance

For a free, no obligation quote contact

Mark Ingram  0191 4283404

 07860 471000  mark@atomalarms.co.uk



Helen's House and Pet Sitting

Friendly Tailored Service - Local - Professional

Experienced and reliable pet and house sitter
Also able to help with horses, ponies and smallholdings
Fully insured with references available

 **07940 809725**  helen.e.arco@gmail.com

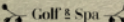


Golf Memberships

at Linden Hall Hotel

yearly prices from
£425

Contact 01670 500 011
for bookings and info.

Linden Hall Hotel


SUPPORT LOCAL BUSINESS



STEPHENSONS GARAGE



Servicing & Repair
Tyres, Batteries & Exhausts
We only use approved parts
Trustworthy, high quality work

Office ☎ 01670 788611

Mobile ☎ 07710 829437

✉ stephensonsgarage@gmail.com

GreenThumb
LAWN TREATMENT SERVICE



Green Thumb

The leading lawn care specialists in the UK.
We offer a free, no obligation, lawn analysis
to assess your lawn's condition.

Prices from just £15 per treatment

Call us now on ☎ **0191 488 6202**

✉ newcastle@greenthumb.co.uk

It's a good time to review your Will



Since you made a Will have you:
Got new family members?
Got married, or lost someone?
What if your partner leaves it to
their own kids when you pass?

**PROTECT
your loved
ones - it's
easy**

**Northland Wills
Trusts & Probate
01670 788200**

FREE safe consultations in
your home OR over Zoom

**Specialists in Wills, Trusts,
Probate & Powers of Attorney**



AFR

Morpeth Carpet Cleaning

Carpet Cleaning ~ Upholstery Cleaning
Stain Removal & Protection ~ Free Estimates

**Professional Carpet & Upholstery Cleaning | Newgate Street, Morpeth
Call Simon on 07506622680 or email info@ufr-carpetcleaning.co.uk**