



# Longhorsley Tree

The newsletter for the Parish of St Helen's  
October 2024 Issue 128

Newsletter website:

[sites.google.com/site/LonghorsleyTree](https://sites.google.com/site/LonghorsleyTree)

or [tinyurl.com/LonghorsleyTree](https://tinyurl.com/LonghorsleyTree)

or Google "Longhorsley Tree"

## Northern Ark Update

After a busy summer, the season is winding down for the Nursery and Hedgeley Honey. While the nursery will close on the **12th October**, you can still buy plants at our regular market stalls at Alnwick every Saturday and at our usual pitches at Morpeth, Kelso and Hexham. We will also have an honesty box at our road end with honey for sale.

You'll also find us at county shows through October - check our website [www.northernarknursery.co.uk](http://www.northernarknursery.co.uk) and Facebook page for details.

Essential jobs to do in the garden in mid-autumn:

- Place fallen leaves on the compost heap or into chicken wire pens or bags to rot down into leaf mould. Shredding leaves will help them break down quicker.
- Plant bare-root fruit trees, such as cherries, apples, plums, and pears, before the ground gets too hard. Apply grease bands to trees and their stakes to deter pests.
- Leave bean plant roots in the soil – they add nitrogen. Dig them in later. Sow broad beans in pots in a cold greenhouse, cloche, or cold frame for an early crop.
- Prune bush roses now, as reducing their height will prevent wind rock. Climbing roses can be pruned now, unless the variety is late flowering. Pick up and burn any diseased rose leaves.
- Plant spring bulbs if the soil isn't too wet. If your garden has had tulip fire, wait until next month or December.
- Plant up containers with Hippeastrum (Amaryllis) bulbs for a new year display.
- Sweet peas can be sown early, in the glasshouse, for next spring.

At Hedgeley Honey we have almost completed bringing the hives back from the heather moors to their sheltered winter apiaries. The hives are fed sugar syrup and treated against varroa mites in preparation for the winter.

For more information on our online shop and stockists, visit [www.hedgeleyhoney.co.uk](http://www.hedgeleyhoney.co.uk).

## Longhorsley Parish Council

The next Parish Council meeting will be held on Wednesday, **9th October**, in the Village Hall, starting at 7pm, with a parishioner slot at 8pm. Meeting notices are displayed on village notice boards, with minutes and other information found on the Parish Council website at:

[northumberlandparishes.uk/longhorsley](http://northumberlandparishes.uk/longhorsley)

Contact details for the current members are detailed below:

**Clerk:** Gillian Turner, 4 Lowther Close, Seaton Manor, Ashington, NE63 0HY

☎ **01670 812704** or ✉ [parishclerk@longhorsley-pc.gov.uk](mailto:parishclerk@longhorsley-pc.gov.uk)

**Chairman:** Norman Douglas ☎ **07485 174529**

✉ [norman.douglas@longhorsley-pc.gov.uk](mailto:norman.douglas@longhorsley-pc.gov.uk)

**Councillors:** Sarah Alcock, Kirsty Bell, Peter Boyle, Jennie Parker, Anne Peat and Trevor Potts.

### Conclusion of External Audit 2023/24

The signed-off annual audit documents have now been received back from our External Auditors, MAZARs LLP, and were presented to Council at the meeting held on 11th September. No concerns were raised and there were no matters arising from the audit review to bring to the Council's attention. Further details can be found on our website and noticeboard, including your "Rights of Inspection".

### Jobs for the Autumn – Reminder to all Residents

At the end of the nesting season it is a good time to carry out all of those jobs that have been put off during the summer months, such as trimming hedges, trees and shrubs to prevent them overhanging and blocking pathways etc. Residents are also reminded not to park up on grassed areas, such as those in the Whitegate Estate, to prevent the areas being churned-up during the winter months.

---

### Longhorsley Village Hall AGM

The AGM for the Longhorsley Village Hall is to be held in the village hall on Tuesday **15th October** starting at 7pm.

Members of the community are welcome to attend and can raise any points they may have with the committee.

An agenda will be produced and will be displayed on the village notice boards prior to the meeting.

**Jackie Frier** ✉ [jjfrier@yahoo.com](mailto:jjfrier@yahoo.com)

---

The **Longhorsley Tree** is edited and delivered by a team of volunteers organised by St Helen's Church. We are indebted to Longhorsley Parish Council for funding the publication.

## Your County Councillor

I am pleased to say that after a long campaign to get this it now looks like we will get our fixed speed camera up and running in the next twelve months. Our Council is part of a partnership including other Councils and Northumbria Police and I need all of them to agree to the move to modernise the boxes but I am hoping to get that in the next nine months.

Meanwhile, the camera van is preparing to pay us a visit - so beware!!!

As always, any NCC issues please let me know and I'll be glad to try to help.

**Glen Sanderson 07730 979737 [glen.sanderson@northumberland.gov.uk](mailto:glen.sanderson@northumberland.gov.uk)**

---

## Leaving Longhorsley

As I leave Longhorsley after 18 years, I just wanted to express my thanks to the Longhorsley community, my Longhorsley friends and acquaintances, the school, the Village Hall, the churches, the allotments and the shop who have served me and my family well, making it a place we will always remember fondly.

I'd like to give a special mention to the Village Hall social group, and in particular two stalwarts Vicky and Tanya. Without Vicky's cooking and Tanya's "this is the way to do it" we would never have made it! We've had such fun over the years putting on bands, quizzes and New Years Eve parties. Thanks to all my partners in crime for making these a great success and creating such fun memories!

Please welcome Bobbie and Michael Brown and their family now living at Oak Tree House into the village... they are enjoying it so far!

Of course if anyone wants to learn to ride a bike, please get in touch with "Cycle With Jan"...

**Jan Chisholm**

---

## TAKEAWAY FOOD IN LONGHORSLEY

**The Shoulder of Mutton** is open and offering takeaways every day

Sunday lunches 12 - 6pm ~ Monday to Saturday 5 - 8pm

See their menu at [🌐 shoulderofmuttonpub.com](http://shoulderofmuttonpub.com) ~ phone 788236 to order

**The Flying Fryer** every **Friday** from 4pm - 7pm, or later.

**They will not be here on Fridays 4th and 11th October.**

Facebook [The Flying Fryer](#) 📞 07984 426 725

Dou\_h&co visits on one **Thursday** in the month from 4.30pm - 7.30pm

Pre-order on 📞 07507 834 628 from Monday 9am.

See their menu on [🌐 dou-h.co.uk](http://dou-h.co.uk), Instagram or Facebook [Dou\\_h & Co.](#)

## GROUP ACTIVITIES

Toddlers' Group		Every Thu	9.15am-11am	L'horsley V Hall	Term-time	Joanna Reilly 07739 321737
Mission Baby & Toddler Group		Every Tue	9.30am-11.30am	Mission	Term-time	Win Pagan 788263
Bible Club		Every Fri	3.15pm-4.30pm	Mission	Term-time	Ian Neilly 01670 518202
Longhorsley Explorers		Every Mon-Thu	7.30am-6pm	L'horsley V Hall	Term-time	07522 486910 07522 486953
		Every Fri	7.30am-1.30pm			
Junior Football Club	U8's	Every Mon	6pm-7pm	MUGA	Oct-Apr  Note: May-Sep on the Common	Steven Dick 07803 026786  Ben McMorrow 07970 840587  Andrew Archibald 07810 115152
	U6's		5pm-6pm			
	U9's		6pm-7pm			
	U12's Giras		7pm-8pm			
	U7's	Every Wed	5pm-6pm			
	U11's		6pm-7pm			
	U13's		7pm-8pm			
	U8's	Every Thu	5pm-6pm			
	U12's Zebs		6pm-7pm			
U14's	7pm-8pm					
Longhorsley Carpet Bowls		Every Mon	7pm-9pm	L'horsley V Hall	Sept-June	Olive Light 07907 714455
Wingates Carpet Bowls		Every Wed	7.30pm	Wingates V I Hall	Sept-Mar	Heather 01670 778413
Wingates Bridge Club		Every Tue	7.30pm-9.30pm	Wingates V I Hall		Robert Famelton 01669 620512
Wingates Reading Group		2nd Thu	7.30pm	WG/NW V Halls		
Embroidery Group		1st Fri	2pm	L'horsley V Hall	<b>4th Oct</b>	Val Douglas 07483 233074
Art Group		2nd, 4th Fri	2pm-4pm	L'horsley V Hall	<b>11th Oct 25th Oct</b>	Val Douglas 07483 233074
Local History Society		2nd Tue alt months	7.30pm	L'horsley V Hall		Derek Knox 788329
St Helen's Coffee Morning		1st Sat	10am	St Helen's Church		Mary Stephenson 788232
Wildlife Trust		1st Mon	7.30pm	Jubilee Rothbury	<b>7th Oct</b>	Conrad Chilvers 788351
Longhorsley WI		1st Thu	7.30pm	L'horsley V Hall	<b>3rd Oct</b>	Audrey Wiggins 788692

Women Together	Every Thu	10.45am-12pm	Mission		Win Pagan 788263
Christian Vision for Men	Last Sat	8.30am	Anglers Arms	<b>26th Oct</b>	Jim Cockburn 510130
Walking Group	1st Mon 3rd Thu	10am	Start of walk	<b>See below</b>	Jan & Sheena 07801 005634
Keep Fit Class	Every Mon	9.15am-10.15am	L'horsley V Hall		Mary Stephenson 788232
Adult 5-a-side	Every Sun	6.30-7pm	MUGA or Common		Steven Bates 07793 888 311
Ladies Lunch Group	Every Month	Lunch time	Varies	<b>15th Oct</b>	Frances Murphy 07909 992046
Warm Space	Every Wed	10am-12pm	L'horsley V Hall		Jane Pringle 07729 182511

## Longhorsley WI

After a fascinating talk about the work of Magistrates at our September Meeting, we are looking forward to welcoming Joan Howard from Morpeth in October. Our Meeting is on Thursday **3rd October** at 7.30pm in the Village Hall when Joan will be telling us about her knitted figures.

Visitors always welcome. For any information contact:

**Audrey Wiggins**, Secretary ☎ **788692** or ✉ [swigginsa@btinternet.com](mailto:swigginsa@btinternet.com)

---

## Christian Vision for Men

The Christian Vision for Men group has monthly breakfasts at the Angler's Arms. Our next breakfast will be on Saturday **26th October** at 8.30am. Our speaker that morning will be Doctor Mark Lee, a consultant in palliative care. The title of his talk will be "Assisted Dying Some Thoughts". The charge for those attending the breakfast is £11 (cash only).

For more information and to book a place, please contact

**Jim Cockburn** on ☎ **01670 510130** or ✉ [jim.cockburn@btinternet.com](mailto:jim.cockburn@btinternet.com)

---

## Northumberland Wildlife Trust - Coquetdale Group

We meet on the first Monday of each month from September to April at the Jubilee Hall, Rothbury. Outings/visits are organised in the summer months. Guests are very welcome and a fee of £4 is charged. Doors open at 7pm with tea and coffee available for a small donation.

Monday **7th October** at 7.30pm: Peter Matthewson will talk about "Creating the Private Nature Reserve in Morpeth, Clarks Bog".

Monday **4th November** at 7.30pm: Geoff Sample will talk about "Tracking Europe's Wild Soundscapes".

Contact **Conrad Chilvers** ☎ **788351**.

## GROUP ACTIVITIES

### St. Helen's Coffee Morning

THANK YOU to those who supported a successful Coffee Morning on the 7th September.

There will **NOT** be a Coffee Morning in October.

**Mary Stephenson** ☎ 788232



---

### Ladies Lunch Group

The next Ladies Lunch will be at The Turk's Head in Rothbury at 12.30pm on the **15th October**.

Could those intending to come please let me know at

✉ [francesmurphy48@gmail.com](mailto:francesmurphy48@gmail.com), and copy to ✉ [olivelight72@gmail.com](mailto:olivelight72@gmail.com)

---

### Walking Group

The walks are usually 4 to 6 miles long and it's a good idea to bring a drink and energy snack on the walk.

Our last walk in September was a lovely quiet amble along the beach between Alnmouth and Boulmer.

The next upcoming walks are:

Monday **7th October**: TBC, led by Mike ☎ **07780 943426**.

Thursday **17th October**: Ingram Valley, led by Sheena and Jan.

New walkers are always welcome. For more information please contact **Sheena & Jan** ☎ **07801 005634**



---

### Keep Fit Class

We continue to exercise in the Village Hall on Monday mornings, between 9.15 and 10.15am. New members are most welcome.

Shirley Forster is our Instructor and sessions are in conjunction with Age UK.

**Mary Stephenson** ☎ 788232

---

### Mobile Library Visiting Times

The Mobile Library visits Longhorsley once a month, on Fridays between 3pm and 4pm, in the Village Hall car park.

The next visits will be on the **18th October** and **15th November**.

## LOCAL EVENTS



### Warm Space Coffee Mornings!

Please come along and join us for a coffee or tea, cheese scone, great conversation and good company.

We're open **every Wednesday morning**,  
10am to 12 noon, in **Longhorsley Village Hall**.

We'd love to see you, everyone welcome, and it's all free!!

### Longhorsley Indoor Bowls Club

#### Open Evening

Monday **14th October** at 7pm

Longhorsley Village Hall

Come along and have a go.

You will be most welcome and there will be light refreshments.

All free.



### "Fun with Flowers"



Longhorsley Village Hall  
Friday **18th October**, 2.30 - 4pm

Everyone welcome. Please book your place by emailing  
**Olive** ✉ [olivelight72@gmail.com](mailto:olivelight72@gmail.com) or phone ☎ **07907 714455**  
£5 each, which includes demonstration and refreshments.  
Come and try something new!



### Cafe at 4

**St. Helen's Church, Longhorsley**

Sunday **20th October** at 4pm

An informal time for all ages to celebrate our farming community,  
with special guest Farmer John,  
who will talk briefly about the ups and downs of farming life.  
Join us for tea/coffee/cake etc.

**Stories - Songs - Action - Crafts - Fun**

## LOCAL EVENTS



### Car Boot and Tabletop Sale

Longhorsley Village Hall

Sunday **13th October**, open to public 10am - 12 noon

**FREE ENTRY**

Car Boots and Tables **MUST** be pre-booked and paid for in advance.

£10 per table      £10 per car boot

Contact: ✉ [longhorsleyvillagesocialevents@gmail.com](mailto:longhorsleyvillagesocialevents@gmail.com)

### Wine Tasting

Longhorsley Village Hall

Friday **29th November** at 7pm

**£20 pp, including entry into raffle  
and Cheese and Biscuits**



Booking essential, tickets are limited (£10 deposit pp)

✉ [longhorsleyvillagesocialevents@gmail.com](mailto:longhorsleyvillagesocialevents@gmail.com)

Led by Preet Sahota (Edgmond Wines)

Opportunity to order wines on the night from Preet



### Christmas Get Together

Longhorsley Village Hall

Saturday **7th December** 2pm

Come and have some fun and try your hand at making a festive wreath. Materials will be supplied, or bring your own to personalise your wreath.

Tea/Coffee, Mince Pies and Mulled Wine.

Places are limited so make sure to book - £30 pp

Contact: ✉ [longhorsleyvillagesocialevents@gmail.com](mailto:longhorsleyvillagesocialevents@gmail.com)

## LOCAL EVENTS



**Longhorsley  
Village Hall**

Drummonds Close, Longhorsley, NE65 8UR

### Future Events in the Village Hall

Sun <b>13th October</b>	Car Boot/Table Top Sale (Date Changed) 10am - 12 noon
Sat <b>9th November</b>	Coffee Morning (to raise funds for new hall boiler) 10am - 12 noon
Fri <b>29th November</b>	Wine Tasting, 7pm £20 pp - booking essential
Wed <b>4th December</b>	Christmas Quiz, 7pm for 7.30pm start <b>At Shoulder of Mutton</b>
Sat <b>7th December</b>	Wreath Making, 2pm £30 pp - booking essential



**Saturday 12th October**

A torch-lit 6km fully marshalled route  
up Humbleton Hill



**HospiceCare**  
NORTH NORTHUMBERLAND  
Caring for Life



### Light up the Glendale Night Guided Walk

Registration at Cheviot Centre, Wooler, at 5.30pm  
£10 Adult, £5 Child (Sponsorship per family £25)  
Scan the QR code, or telephone

**01665 606515** or **01289 309997** for more information



### Stars for Loved Ones

Put the name of a loved one on a star and the School PTA will laminate it and hang it on the village Christmas Tree.  
Only £1 at the Village Hall until Thursday **28th November**.  
The PTA are raising money to develop the outside space so the children can use it in all weathers, getting lots of exercise and fresh air.

Thank you for your support, Longhorsley PTA.

## LOCAL EVENTS

**The Northumbrian Language Society presents**  
on Saturday **19th October** at the County Hotel, Newcastle

### **The 2024 Roland Bibby Memorial Lecture**

by linguist Adam Mearns

As the NLS is hosting this year's National Dialect Festival, as well as the lecture, there will be 3 competitions and an evening entertainment provided by all the Societies from around the country that are taking part. It is free to attend so come and join in the fun. To ensure we save you a seat, please contact our Chairman/Treasurer to book a place, although you are also welcome just to come along on the day.

See the website for full details: [www.northumbrianlanguagesociety.co.uk](http://www.northumbrianlanguagesociety.co.uk)  
Email: [iamtreasurer@gmail.co.uk](mailto:iamtreasurer@gmail.co.uk)

**highlights** and Wingates Village Institute Hall present  
rural touring scheme

**Set Menu: The Best of George Egg**, Tuesday **22nd October**, 7.30pm



Comic chef, food prepared in unusual ways with the chance to sample. It's time for the funniest recipes and the most delicious jokes!

Tickets: Adult £12, Child £8 (Highlights - see below)

**A Lupton, S Cook and K Waymouth**, Tuesday **19th Nov**, 7.30pm



An exciting award winning Canadian trio performing a glorious mix of beautiful story songs, electrifying fiddle tunes and dazzling step dance.

Tickets: Adult £12, Child £8 (Highlights - see below)

Info and bookings from: ✉ [famelton@rothbury.net](mailto:famelton@rothbury.net), ☎ **01669 620512**  
and also online (for a small extra fee) from 🌐 [www.highlightsnorth.co.uk](http://www.highlightsnorth.co.uk)

## *The Longhorsley Masquerade Ball*

This year's Ball is on Saturday **7th December** at Linden Hall.  
Tickets are £55pp to include a glass of fizz, three course dinner, close up magician, the wonderful band Shakedown, followed by a disco.

Tickets are on sale now, so please do get in touch!

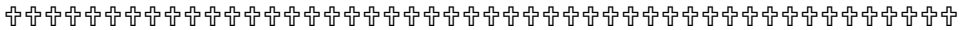
**Lizzy Prescott** ☎ **07595 909510**, **Karen Fish** ☎ **07803 603376**  
and **Clare Percy** ☎ **07825 291806**



## St Helen's Church

### Sunday Service:

- 10am Holy Communion  
(1st Sunday of month)
- 10.30am Holy Communion at **Netherwitton**  
(3rd Sunday of month)
- 10am Morning Prayer  
(2nd, 4th and 5th Sundays)



### St Helen's Contact Details

During the Interregnum the Area Dean will be responsible for the Parish.  
Rev. Chris Grocock ☎ **01670 813358** 🌐 [www.achurchnearlyou.com](http://www.achurchnearlyou.com)

---

### CAN YOU HELP?



The people at Wansbeck Valley Food Bank believe that in our community no one should go hungry.

However, we live in a world where almost overnight life and wellbeing can so easily be disrupted and without realising many of us tread this fine line. Every day we hear of shops, pubs or restaurants and other businesses closing down which means people losing their jobs. The foodbank is totally committed to relieving food poverty.

Please help if you can. Urgently needed items currently are:

Breakfast cereals, Jam and Marmalade (Not home made), Tinned rice pudding, UHT milk, Boxes of cup-a-soup, Tinned soup, Packets of potato (Smash or equivalent), Hot dogs/meatballs, Childrens toothbrushes, Nappies – sizes 6 & 7.

Collection points are in the Village Hall entrance and in the bar area of the Shoulder of Mutton. Many thanks, **Sue Etchells**

### Post Office in Longhorsley Village Hall

Mon 9.15am - 11.30am ~ Fri 11.30am - 1.30pm

Please note that this Outreach Service cannot accept large parcels.

**November Edition** - The last date for submissions is **20th October**.  
**Jan and Sheena Haveman 07834 740649** [longhorsley.tree@gmail.com](mailto:longhorsley.tree@gmail.com)  
For a larger print version please contact **Olive** on **07907 714455**.



## **Longhorsley Mission Free Church Sunday Services:**

11am Family Service and Sunday  
School

Other Sunday services by arrangement, information thereof being available from our Contact below.

For our other group meetings, please see the Group Activities sections. Visitors are always very welcome to all our events.

### **Longhorsley Mission Harvest Thanksgiving Service**

Sunday **6th October** at 11am

Speaker: Rob Parsons (Wooler Evangelical Church)

All are welcome.

All gifts will, once again, be donated to Wansbeck Valley Food Bank.

Contact **Ian Pagan** ☎ **788263** ✉ [idpagan@btinternet.com](mailto:idpagan@btinternet.com)

Website: [www.longhorsleymission.org.uk](http://www.longhorsleymission.org.uk)

---

### **Thought for the Month**

This September was the 23rd anniversary of the 9/11 attack on New York City. I will never forget the time we visited Ground Zero in 2014 on a cold February morning. We heard from two of the First Responders who were present on that day, and it was very moving to see how it still affected them as they told of their experiences and the colleagues, they remembered, who were tragically killed. Three thousand people died but around fourteen thousand were able to be rescued from the burning buildings. Many decisions had to be made in short periods of time. Janice Brooks worked for a brokerage firm on the 84th floor of the South Tower when the first plane hit the North Tower. She and her fellow workers had to make a decision on whether to stay or leave. She decided to leave even although the advice through the building's communication speakers was that everyone should stay at their desks. She survived. Her co-workers who stayed died.

I hope, like everyone else, I shall never be in a similar situation. I do not know what I would have done had I been in her shoes. We all face potential life changing decisions sometimes without realizing the full meaning of our choices. Jesus called many people to follow Him. The disciples Peter and Andrew, James and John left their fisherman's nets to follow him. They were unaware of all that was going to happen but they knew Jesus was the promised Messiah and he was worth following.

Even when others left Jesus, they were asked by the Lord, “Do you want to go away too?” Peter replied, “Lord, to whom shall we go? You have the words of eternal life, and we have believed, and have come to know, that you are the Holy One of God.” John chapter 6 verses 68-69.

Jesus told a parable about two sons (Matthew chapter 21 verses 28-32) who were asked by their father to work in his vineyard. One said he would go but didn't and the other said he would not go but changed his mind and went. “Which one did the will of his father?” Jesus asked. “The one who went.” They replied. We might think we have made our decision about Jesus. Circumstances in our life can force us to think again! We can see Jesus through different eyes and we can change our mind. He wants us to follow Him, believe in Him, know our sins forgiven in Him and experience the joy of the Eternal life that only He can give. It is our choice whether we do or not.

**Ian Neilly**, Longhorsley Mission.



### **St Thomas Catholic Church**

Every Monday and Thursday - Mass at 12noon

Every Sunday - Mass at 11.15am

✉ [longhorsley.stthomas@rcdhn.org.uk](mailto:longhorsley.stthomas@rcdhn.org.uk)

🌐 [www.stthomaslonghorsley.com](http://www.stthomaslonghorsley.com)

### **New X16 Wooler to Newcastle Bus now Stopping in Longhorsley**

This service will make **infrequent** stops in Longhorsley. It may be used to visit Morpeth, Newcastle, Wooler or Kelso.

The 710 service no longer runs. The X14 service is unchanged.

See the relevant X16 times below, a=arrival time, d=departure time.

<b>To NCL</b>	Kelso	Wooler	<b>Longhorsley</b>	Morpeth	Newcastle
Mon-Fri		6.52	<b>7.38</b>	7.53a - 7.58d	8.47
Sat	8.19	9.05a - 9.10d	<b>9.53</b>	10.08a - 10.13d	10.47
		14.10	<b>14.53</b>	15.08a - 15.13d	15.47
<b>From NCL</b>	Newcastle	Morpeth	<b>Longhorsley</b>	Wooler	Kelso
Mon-Fri	17.03	17.47a - 17.50d	<b>18.05</b>	18.51	
Sat	10.53	11.27a - 11.35d	<b>11.50</b>	12.33	
	15.58	16.30a - 16.35d	<b>16.50</b>	17.33a - 17.39d	18.24

## Longhorsley Village Hall Sweepstake - September Winners

1st Prize	£50	Peter Blake	3rd Prize	£15	Oliver Staines
2nd Prize	£25	Patricia Forster	4th Prize	£10	Eileen Yeoman

There are still some spare numbers left in the sweepstake. If you would like to take part, or even take out another number, then please get in touch with **Garry** or **Janice Ritchie** ☎ **07713 583311** ✉ [garry7256@aol.com](mailto:garry7256@aol.com)

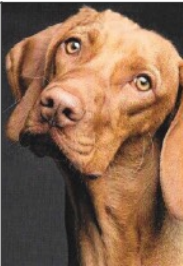
## SUPPORT LOCAL BUSINESS



**A WARM WELCOME IN THE HEART OF NORTHUMBERLAND**

Open daily from 12 noon  
Sunday Lunch 12noon - 5pm

The Linden Tree Pub, Linden Hall Hotel, Golf & Spa,  
Longhorsley, Morpeth, Northumberland, NE65 8XF  
01670 500 000 | [lindentreepub.com](http://lindentreepub.com)



## Helen's House and Pet Sitting

**Friendly Tailored Service - Local - Professional**

Experienced and reliable pet and house sitter  
Also able to help with horses, ponies and smallholdings  
Fully insured with references available

☎ **07940 809725** ✉ [helen.e.arco@gmail.com](mailto:helen.e.arco@gmail.com)



## Atom Intruder Alarms

**Commercial & Domestic Security Systems**  
**Alarm and CCTV**  
**Installation & Maintenance**

For a free, no obligation quote contact

Mark Ingram ☎ 0191 4283404

☎ 07860 471000 ✉ [mark@atomalarms.co.uk](mailto:mark@atomalarms.co.uk)

## SUPPORT LOCAL BUSINESS



NORTHUMBERLAND PEST CONTROL

### NORTHUMBERLAND PEST CONTROL

Fully licensed and insured pest and vermin control.  
Moles, rodents, rabbits, wasps and other insects.

**Residential / Agricultural / Estate / Commercial**

Contact Rory Brotherton ☎ 788174 or 07769 176666

✉ [info@northumberlandpestcontrol.co.uk](mailto:info@northumberlandpestcontrol.co.uk)

🌐 [www.northumberlandpestcontrol.co.uk](http://www.northumberlandpestcontrol.co.uk) and facebook



## LONGSTAFF TREE SURGERY

Ian Longstaff, Rothbury, Northumberland

**FREE SURVEY & QUOTES – COMPETITIVE PRICES**

☎ 07528 744 011 or 01669 504 060

✉ [ilongstaff2002@gmail.com](mailto:ilongstaff2002@gmail.com)

📘 Longstaff Tree Surgery

🌐 [www.LongstaffTreeSurgery.com](http://www.LongstaffTreeSurgery.com)



### Serving good food to eat-in or take-out

Monday to Thursday: 12-3pm and 5-8pm

Friday/Saturday: 12-9pm and Sunday: 12-6pm

🌐 [www.shoulderofmuttonpub.com](http://www.shoulderofmuttonpub.com)

📘 The Shoulder of Mutton



Enquiry form

*Emma Rutherford*

Your local independent travel agent

01670 720022

[emma.rutherford@mytc.com](mailto:emma.rutherford@mytc.com)



Expert travel guidance  
Personal caring service  
ATOL & 100% financial  
protection

📘 @emmarutherfordtravelcounsellor

📷 @emmastravelescapes



## SUPPORT LOCAL BUSINESS

**GreenThumb**  
LAWN TREATMENT SERVICE



### Green Thumb

The leading lawn care specialists in the UK.  
We offer a free, no obligation, lawn analysis  
to assess your lawn's condition.

**Prices from just £15 per treatment**

Call us now on ☎ **0191 488 6202**

✉ [newcastle@greenthumb.co.uk](mailto:newcastle@greenthumb.co.uk)



## Now is a good time to make a Will

Protect your estate from

- The tax man
- Care fees
- New partners

**Maximise what  
you leave your  
loved ones**

Northland Wills  
Trusts & Probate  
01670 788200

**FREE consultations in  
your home OR over Zoom**

**Specialists in Wills, Trusts,  
Probate & Powers of Attorney**

**fsb**  
Experts in Business



Institute of  
Professional  
Willwriters  
MEMBER



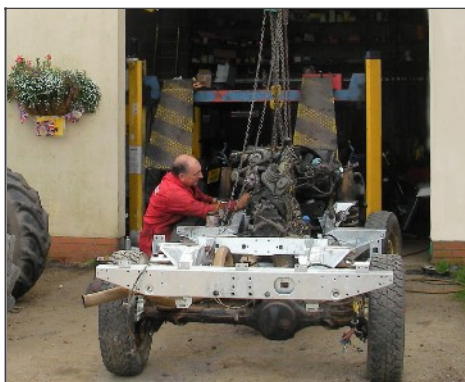
APPROVED CODE  
TRADING STANDARDS UK

# AFR

## Morpeth Carpet Cleaning

Carpet Cleaning ~ Upholstery Cleaning  
Stain Removal & Protection ~ Free Estimates

**Professional Carpet & Upholstery Cleaning | Newgate Street, Morpeth**  
Call Simon on 07506622680 or email [info@ afr-carpetcleaning.co.uk](mailto:info@ afr-carpetcleaning.co.uk)



## STEPHENSONS GARAGE

**MOT  
Centre**

Servicing & Repair

Tyres, Batteries & Exhausts

We only use approved parts

Trustworthy, high quality work

Office ☎ 01670 788611

Mobile ☎ 07710 829437

✉ [stephensongarage@gmail.com](mailto:stephensongarage@gmail.com)