

SEWAGE POLLUTION IN THE NORTH TYNE

JULY 2023

Raw sewage discharged into English rivers 375,000 times by water firms

Data from 2021 released at same time as government plan to stop 40% of untreated sewage releases by 2040



📷 The number of raw sewage discharges in 2021 was down slightly on the previous year
Photograph: Maureen McLean/Rex/Shutterstock

Sewage spills by water firms have risen 29-fold over the last five years

Senior water executive says it is up to the public to decide whether or not to swim where sewage has recently been released

By Camilla Turner, CHIEF POLITICAL CORRESPONDENT

18 August 2022 • 7:50pm

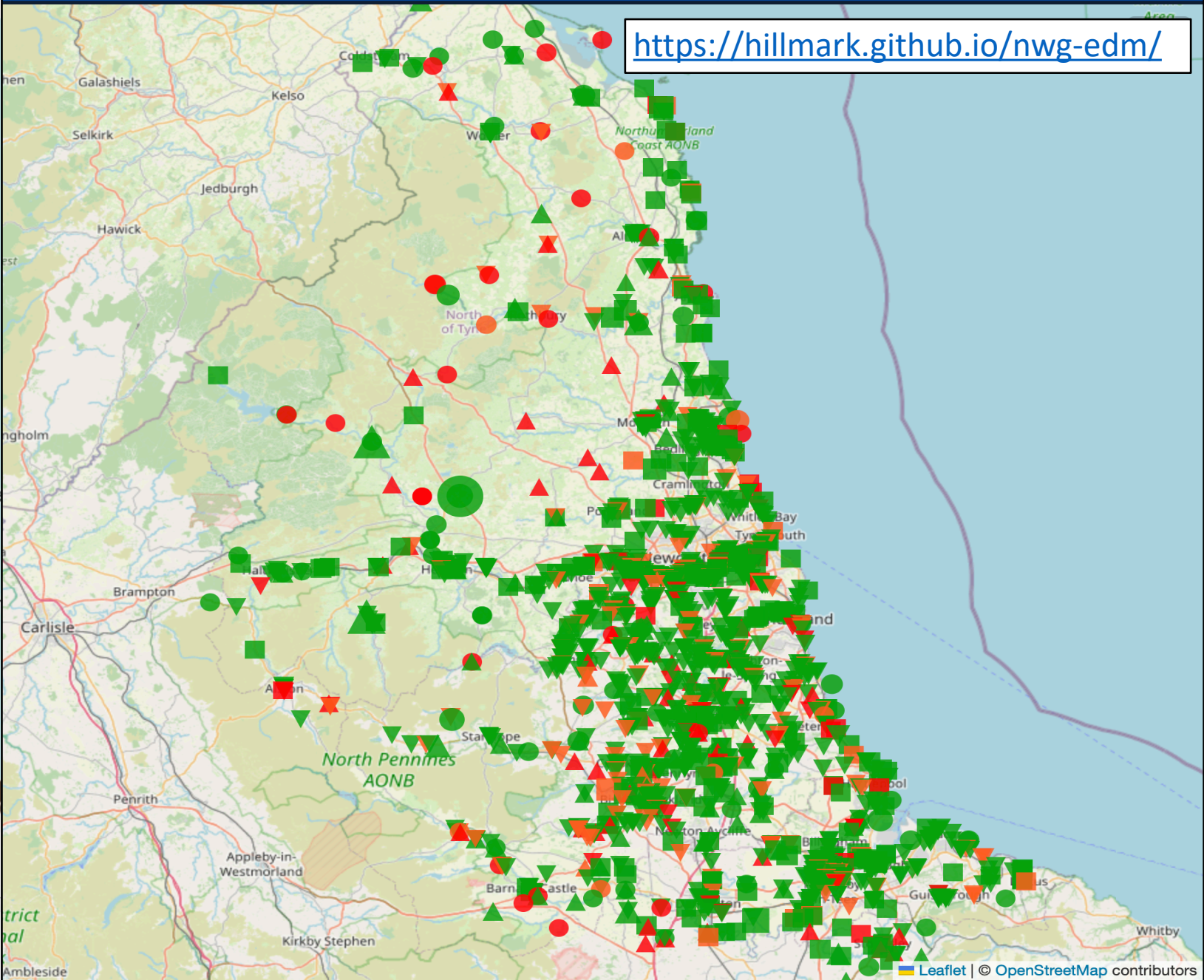
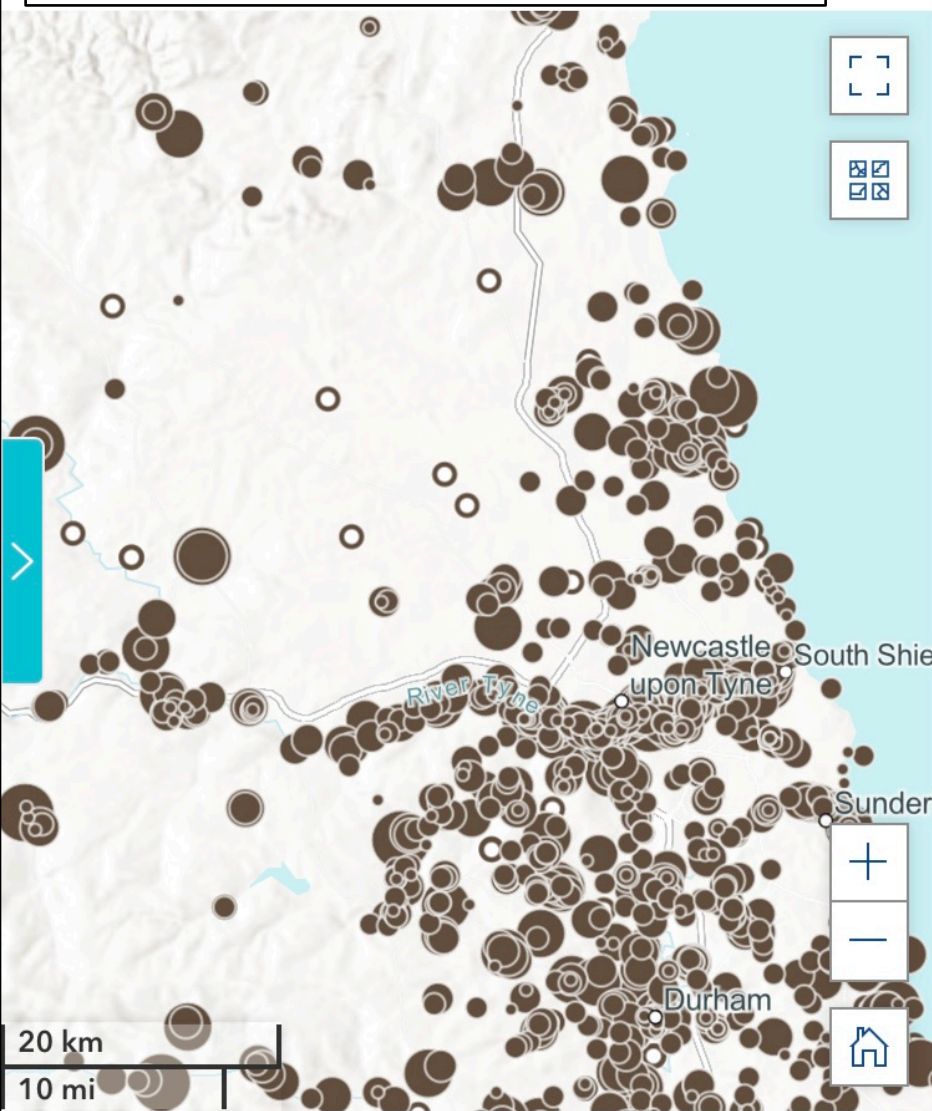


Raw sewage was reportedly discharged off the coast in Seaford on Wednesday following heavy rain | CREDIT: Dan Kitwood

| A | B | C | D | E | F | G | H | I | J | K | L | M |
|--|-----------------------------------|---|--|---|------------------------------|------------------------------------|---|---|---|--|---|---|
| EDM STORM OVERFLOW REGULATORY ANNUAL RETURN 2022 | | | | | | | | | | | | |
| Water Company Name | Site Name (EA Consents Database) | Site Name (WaSC operational) [optional] | EA Permit Reference (EA Consents Database) | WaSC Supplementary Permit Ref. [optional] | Activity Reference on Permit | Storm Discharge Asset Type | Outlet Discharge NGR (EA Consents Database) | WFD Waterbody ID (Cycle 2) (discharge outlet) | WFD Waterbody Catchment Name (Cycle 2) (discharge outlet) | Receiving Water / Environment (common name) (EA Consents Database) | Shellfish Water (only populate for storm overflow with a Shellfish Water EDM requirement) | Bathing Water (only populate for storm overflow with a Bathing Water EDM requirement) |
| Northumbrian | 20 DERWENT DALE CUTLERS RD | 6NW800949 | 234/1113 | 234/1113 | | SO on sewer network | NZ0901752447 | GB103023074790 | Derwent from Burnhope Burn to Riv | RIVER DERWENT | | |
| Northumbrian | 20 PEARSON STREET CSO SE 01 | 6NW801224 | 243/1000 | 243/1000 | | SO on sewer network | NZ2837033580 | GB103024077410 | Croxdale Beck from Source to Wea | EAST HOWLE BECK, TRIBUTARY OF | | |
| Northumbrian | 20 WANSBECK STREET NORTH 6 | 6NW801353 | 225/1063 | 225/1063 | | SO on sewer network | NZ2944085393 | GB510302210100 | WANSBECK | WANSBECK ESTUARY | | |
| Northumbrian | XXX GENEVA ROAD CSO | 6NW801356(1) | #TBC | #TBC | Permit Anomaly | To be permitted for | NZ3069012933 | GB103025072160 | Neasham Stell Catchment (trib of T | Cree Beck into Kent Beck | | |
| Northumbrian | 29 FIRST ROW | 6NW800329 | 224/0969 | 224/0969 | | SO on sewer network | NZ2646891153 | GB103022076820 | Lyne from Source to Tidal Limit | POTLAND BURN (TRIB OF R.LYNE) | | |
| Northumbrian | XX/XX NORTH ROAD CSO | 6NW801452 | #TBC | #TBC | Permit Anomaly | To be permitted for | NZ3543562357 | GB103023075690 | Don from Source to Tidal Limit | River Don | | |
| Northumbrian | 33 DOCK ROAD CSO | 6NW800830 | 210/1345 | 210/1345 | | SO on sewer network | NT9973552213 | GB5102022110000 | TWEED | RIVER TWEED (SALINE ESTUARY) | | Spittal |
| Northumbrian | 4 AYCLIFFE AVENUE CSO | 6NW801313 | 235/1955 | 235/1955 | | SO on sewer network | NZ3060059900 | GB103023075690 | Don from Source to Tidal Limit | DON | | |
| Northumbrian | 5 SOUTH STREET CSO, CROOKI | 6NW800963 | 244/0919 | 244/0919 | | SO on sewer network | NZ1214050620 | GB103024077330 | Smallhope Burn from Source to Bro | STOCKERLEY BURN TRIBUTARY | | |
| Northumbrian | XX Oxclose Crescent Spennymoc | 6NW800055 | #TBC | #TBC | Permit Anomaly | | NZ2558834626 | GB103024077350 | Valley Burn from Source to Wear | Valley Burn | | |
| Northumbrian | 50 WOODSIDE GARDENS CSO | 6NW801112 | 245/1309 | 245/1309 | | SO on sewer network | NZ2095551570 | GB103024077590 | Twizell Burn from Source to Cong E | STANLEY BURN TRIB | | |
| Northumbrian | 66 ROSS LEA CSO | 6NW801411 | 245/1370 | 245/1370 | | SO on sewer network | NZ3235051888 | GB103024077630 | Herrington Burn from Source to Lur | HERRINGTON BURN | | |
| Northumbrian | 85 SNOWS GREEN ROAD CALULC | 6NW800951 | 234/1087 | 234/1087 | | SO on sewer network | NZ0968053110 | GB103023074790 | Derwent from Burnhope Burn to Riv | SNOWS GREEN BURN | | |
| Northumbrian | A CSO AT SMITHS DOCK ROAD | 6NW800669 | QC.25/04/1590 | QC.25/04/1590 | S1 | Storm discharge at pumping station | NZ5290022000 | GB510302509900 | TEES | THE RIVER TEES | | |
| Northumbrian | A1068 ROAD BRIDGE CSO | 6NW800868 | 223/0871 | 223/0871 | | SO on sewer network | NJ2483206265 | GB510302203000 | COQUET | COQUET ESTUARY | | Warkworth & Amble Link |
| Northumbrian | A66 RIDER SEWER CSO | 6NW801559 | 254/0937 | 254/0937 | | SO on sewer network | NZ4678718620 | GB510302509900 | Tees | OLD RIVER TEES | | |
| Northumbrian | A690 SLIP ROAD CSO, SU27 | 6NW801427 | 245/1357 | 245/1357 | | SO on sewer network | NZ3345049090 | GB103024077580 | Lumley Park Burn from Source to H | RAINTON BURN | | |
| Northumbrian | A692 CSO | 6NW800940 | 234/1117 | 234/1117 | | SO on sewer network | NZ0850049000 | GB103023074790 | Derwent from Burnhope Burn to Riv | DENE BURN | | |
| Northumbrian | ABATTOIR ST CSO | 6NW801537 | 254/1860 | 254/1860 | | SO on sewer network | NZ4312017250 | GB103025072550 | Lustrum Beck Catchment (trib of T | TRIB OF HARTBURN BECK | | |
| Northumbrian | ABBEY COURT (AMPLEFORTH A) | 6NW801595 | 254/1855 | 254/1855 | | SO on sewer network | NZ5475118719 | 10 | Cross Beck (river Tees) | CROSS BECK | | |
| Northumbrian | ACKLAM STREET OUTFALL | 6NW800648 | QR.25/04/1512 | QR.25/04/1512 | A1 | Storm discharge at pumping station | NZ4956521392 | GB510302509900 | Tees | River Tees | | |
| Northumbrian | ACOMB CRESCENT (CATHEDRAL | 6NW801152 | 235/1609 | 235/1609 | | SO on sewer network | NZ2296069880 | GB103023075780 | Ouse Burn from Source to Tyne | OUSE BURN | | |
| Northumbrian | ACOMB CSO | 6NW800893 | 233/G/0243 | 233/G/0243 | | SO on sewer network | NY9264465247 | GB103023075801 | Tyne from Watersmeet to Tidal Limi | RIVER TYNE | | |
| Northumbrian | ACOMB PUMPING STATION | 6NW800495 | 233/1041 | 233/1041 | 233/1041-01 | Storm discharge at pumping station | NY9306065460 | GB103023075730 | Red Burn (Trib of Tyne) | BIRKLEY BURN (RIVER TYNE) | | |
| Northumbrian | ADDERLANE SCHOOL CSO (TD0 | 6NW800960 | 233/1249 | 233/1249 | | SO on sewer network | NZ1037263365 | GB103023075801 | Tyne from Watersmeet to Tidal Limi | ADDERLANE GILL TRIB PARK BURN | | |
| Northumbrian | ADDISON VILLAGE CSO UNIT 3 | 6NW800246 | 233/1023 | 233/1023 | | SO on sewer network | NZ1697664214 | GB510302310200 | TYNE | TYNE | | |
| Northumbrian | AINSLEY STREET CSO | 6NW800323 | NPSWQD002839 | NPSWQD002839 | | SO on sewer network | GB103024077621 | GB103024077621 | Wear from Croxdale Beck to Lumle | CLVRTRD TRIB OF RIVER WEAR | | |
| Northumbrian | AISLABY QUAY SPS | 6NW800615 | 254/1928 | 254/1928 | A1 | Storm discharge at pumping station | NZ4071712229 | GB103025072595 | Tees from Skerne to Tidal Limit | RIVER TEES | | |
| Northumbrian | ALBANY ROAD/SALTMEADOWS 1 | 6NW801243 | 235/1659 | 235/1659 | | SO on sewer network | NZ2669063657 | GB510302310200 | TYNE | TYNE SALINE ESTUARY | | |
| Northumbrian | ALBION TERRACE STORM RETE1 | 6NW800433 | 255/1092 | 255/1092 | | SO on sewer network | NZ5305733526 | GB650301500005 | Tees Coastal | NORTH SEA | | |
| Northumbrian | ALDBROUGH SEWAGE TREATME | 6NW800742 | 25/02/1079 | 25/02/1079 | 25/02/1079-03 | Storm tank at WwTW | NZ2277010840 | GB103025072060 | Aldbrough Beck from Forcett Park | ALDBROUGH BECK | | |
| Northumbrian | ALDBROUGH ST JOHN SEWAGE | 6NW800743 | 25/02/1081 | 25/02/1081 | 25/02/1081-01 | Storm discharge at pumping station | NZ2059011050 | GB103025072060 | Aldbrough Beck from Forcett Park | ALDBROUGH BECK | | |
| Northumbrian | ALDIN GRANGE CSO | 6NW801180 | 244/1004 | 244/1004 | | SO on sewer network | NZ2448543299 | GB103024077551 | Browney from Smallhope Burn Deer | UNNAMED TRIB OF RIVER BROWNEY | | |
| Northumbrian | ALLENDALE STW | 6NW800700 | 232/1118 | 232/1118 | 232/1118-03 | Storm tank at WwTW | NY8281057030 | GB103023074710 | Allen from Source to West Allen | RIVER EAST ALLEN | | |
| Northumbrian | ALLENSWAY CSO | 6NW800423 | 254/1382 | 254/1382 | | SO on sewer network | NZ4634915842 | GB103025072180 | Stainsby Beck Catchment (trib of T | STAINSBY BECK | | |
| Northumbrian | Allotment Gardens, Shotton Collie | 6NW000039 | #TBC | #TBC | Permit Anomaly | To be permitted for | NZ3962641208 | GB103025075930 | Castle Eden Burn from Source to N | TBC | | |
| Northumbrian | ALN BANK CSO | 6NW800215 | 222/0865 | 222/0865 | | SO on sewer network | NU0711612015 | GB103022076310 | Aln from Callaly Burn to Coe Burn | RIVER ALN | | |
| Northumbrian | ALNMOUTH P STATION | 6NW800476 | 222/0839 | 222/0839 | 222/0839-01 | Storm discharge at pumping station | NU2432010620 | GB510302203000 | ALN | RIVER ALN(SALINE ESTUARY) | | |
| Northumbrian | ALNMOUTH ROAD SSO | 6NW800860 | 222/D/0255 | 222/D/0255 | | SO on sewer network | NU1940013700 | GB103022076350 | Aln from Edlingham Burn to Tidal Li | ALN | | |
| Northumbrian | ALNWICK CASTLE CSO A011 | 6NW800856 | 222/0857 | 222/0857 | | SO on sewer network | NU1885113533 | GB103022076350 | Aln from Edlingham Burn to Tidal Li | BOW BURN | | |
| Northumbrian | ALNWICK CASTLE CSO NO 2 A0 | 6NW800216 | 222/0827 | 222/0827 | | SO on sewer network | NU1913913618 | GB103022076350 | Aln from Edlingham Burn to Tidal Li | RIVER ALN | | |
| Northumbrian | ALNWICK SEWAGE TREATMENT | 6NW800118 | 222/0862 | 222/0862 | A3 | Inlet SO at WwTW | NU2040013200 | GB103022076350 | Aln from Edlingham Burn to Tidal Li | RIVER ALN | | |
| Northumbrian | ALNWICK SEWAGE TREATMENT | 6NW800695 | 222/0862 | 222/0862 | A2 | Storm tank at WwTW | NU2040013200 | GB103022076350 | Aln from Edlingham Burn to Tidal Li | RIVER ALN | | |
| Northumbrian | ALSTON EJECTOR STATION CSC | 6NW800877 | 232/1135 | 232/1135 | A1 | Storm discharge at pumping station | NY7161946248 | GB103023075531 | South Tyne from Black Burn to Tibe | RIVER SOUTH TYNE | | |
| Northumbrian | Alwinton STW | 6NW000046M2 | 223/0419 | 223/0419 | | Inlet SO at WwTW | NT9205006166 | GB103022076770 | Alwin Catchment (trib of Coquet) | Hosedon Burn tributary of River Coquet | | |
| Northumbrian | Alwinton STW | 6NW000046M3 | 223/0419 | 223/0419 | | | | | | | | |
| Northumbrian | AMBLE HARBOUR PUMPING STA | 6NW800482 | 223/0933 | 223/0933 | | | | | | | | |
| Northumbrian | AMBLE WASTE WATER TREATME | 6NW800122 | 223/0931 | 223/0931 | | | | | | | | |
| Northumbrian | AMELIA CLOSE CSO - C49/102 | 6NW800294 | 235/1316 | 235/1316 | | | | | | | | |
| Northumbrian | ANDREWS HOUSE LA HACIENDA | 6NW800952 | 233/1265 | 233/1265 | | | | | | | | |
| Northumbrian | ANGATE STREET CSO | 6NW801629 | EPRBB3992AT | EPRBB3992AT | | | | | | | | |
| Northumbrian | ANICK CSO TD006 | 6NW800902 | 233/1242 | 233/1242 | | | | | | | | |
| Northumbrian | ANNFIELD PLAIN & STANLEY CS | 6NW800245 | EPRBB3491WR | EPRBB3491WR | | | | | | | | |
| Northumbrian | ANNITSFORD BRIDGE CSO | 6NW800335 | 226/1261 | 226/1261 | | | | | | | | |
| Northumbrian | ANNITSFORD BRIDGE CSO FER | 6NW800327 | 226/G/0058 | 226/G/0058 | | | | | | | | |
| Northumbrian | ARGYLE COURT CSO | 6NW801114 | EPRBP3427GC | EPRBP3427GC | | | | | | | | |
| Northumbrian | ARMONSIDE RD CONNOLLY TER | 6NW800981 | 234/1124 | 234/1124 | | | | | | | | |
| Northumbrian | ASH MEADOWS CSO CHESTER 1 | 6NW801312 | 245/E/0593 | 245/E/0593 | | | | | | | | |
| Northumbrian | ASH TREE LANE CSO | 6NW801000 | 234/1056 | 234/1056 | | SO on sewer network | NZ1425059540 | GB103023074790 | Derwent from Burnhope Burn to Riv | SPEN BURN | | |
| Northumbrian | ASHINGTON CSO PARK ROAD W | 6NW801261 | 225/1029 | 225/1029 | | SO on sewer network | NZ2708086616 | GB103022077062 | Wansbeck from Bothal Burn to Nori | BLACKCLOSE BURN (R.WANSBECK) | | |
| Northumbrian | ASHINGTON DRIVE CSO HLF MO | 6NW801259 | 225/0940 | 225/0940 | | SO on sewer network | NZ2690486086 | GB103022077062 | Wansbeck from Bothal Burn to Nori | WANSBECK ESTUARY | | |

Defra's Event Duration Monitoring webpage:
<https://environment.data.gov.uk/dataset/21e15f12-0df8-4bfc-b763-45226c16a8ac>

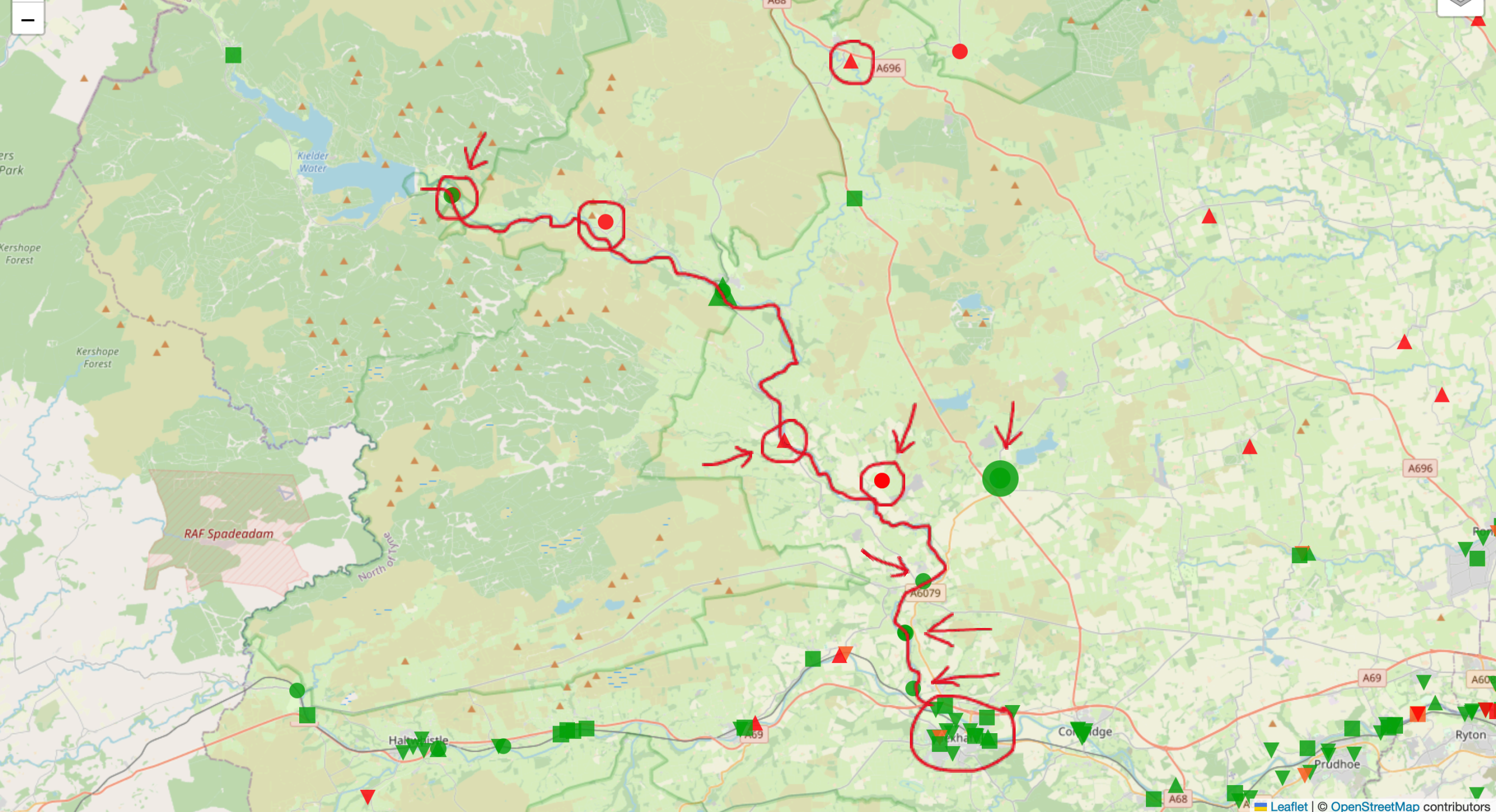
<https://theriverstrust.org/sewage-map>

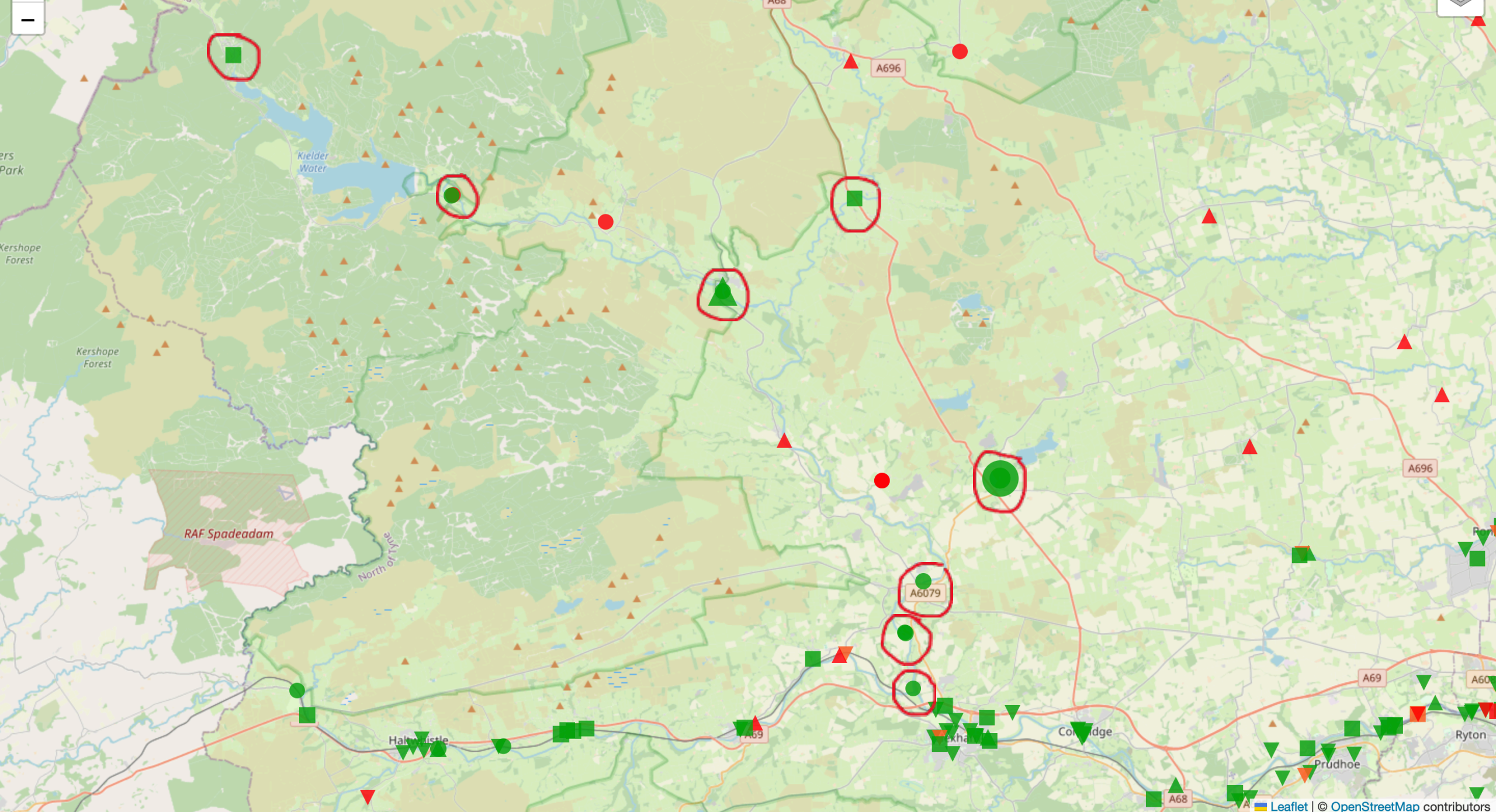


AA

theriverstrust.org





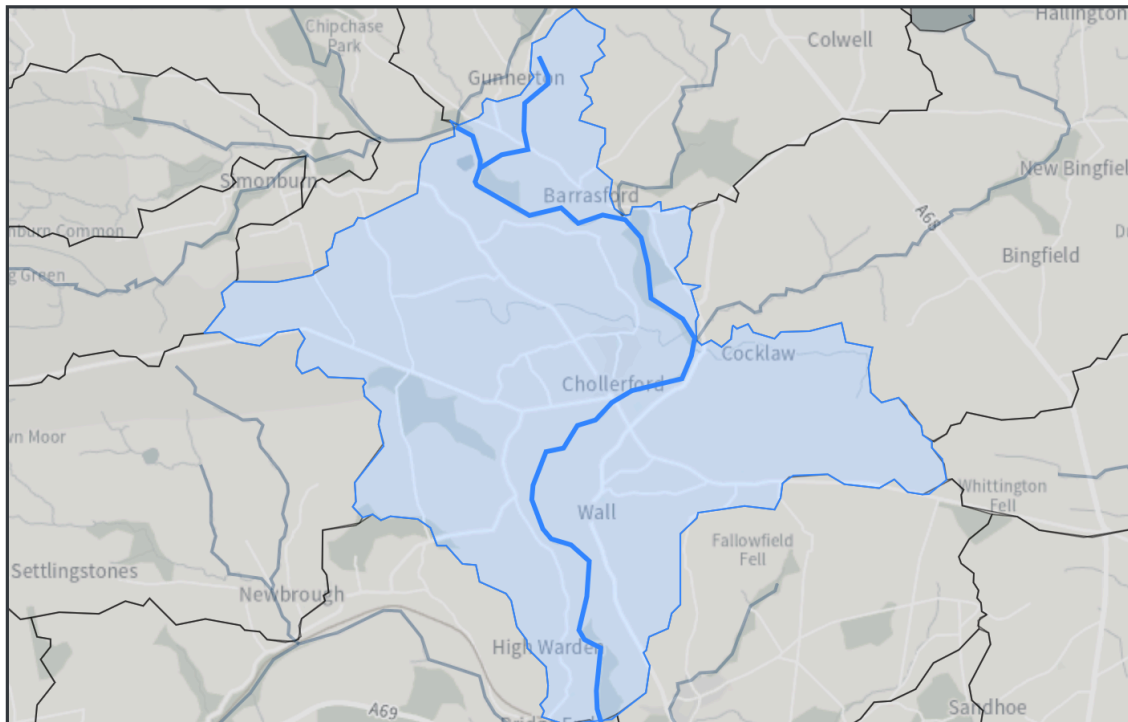


- ✓ **By 2022 were monitoring 98.6% of CSOs across NE (average = 91%)**
- ✓ **Every sewage asset in the Humshaugh ward is now monitored**
- ✓ **Average no. spills/monitored CSO in NE was 25.3 (2021), now 20.3 (2022)**
- ✓ **Total no. of spills in NE has fallen from 36,483 in 2021 to 29,697 in 2022**
- ✓ **Average spill duration in NE has fallen from 6.0 hrs in 2021 to 3.6 in 2022**
- ✓ **Total spill duration in NE was 220,560 hours in 2021, now 107,536 in 2022**
- ✓ **Total spill duration in county was 60,823 hrs in 2021, now 33,055 in 2022**
- ✓ **Last July's Environmental Performance Assessment gave NWL 4/4 overall**
- ✓ **The EPA also gave NWL green ratings for all aspects of pollution control**

- × **29,697 sewage spills across the NE in 2022**
- × **107,536 hours of sewage spillage across the NE in 2022**
- × **33,055 hours of sewage spillage across Northumberland in 2022**
- × **7,725 hours of sewage spillage upstream of Wall Station in 2022**
- × **The 2022 EPA gave NWL an amber rating for discharge permit compliance**
- × **Our bills have gone up by 43% since the water companies were privatised**
- × **Investment in the sewage system has been cut by almost a fifth in that time**
- × **Over £100 of our annual water bill is used to pay shareholder dividends**
- × **NWL is owned by CK Hutchinson Holdings Ltd – scored 3/15 for its ethics**
- × **NWL now has to publish near real-time pollution data, but hasn't yet**

[Home](#) / [Northumbria](#) / [Tyne](#) / [North Tyne Lower](#) / N Tyne from Barrasford to S Tyne confluence

N Tyne from Barrasford to S Tyne confluence Water Body



Moderate ecological status

Get N Tyne from Barrasford to S Tyne confluence data

- [Download water body \(Shapefile\)](#)
- [Download water body \(GeoJSON\)](#)
- [Download classifications \(CSV\)](#)
- [Download site classifications \(CSV\)](#)
- [Download investigations \(CSV\)](#)
- [Download challenges \(CSV\)](#)
- [Download objectives \(CSV\)](#)
- [Download protected areas \(CSV\)](#)

Related links

- [Plan maps on ArcGIS online](#)
- [Flood risk management plans](#)

Link to Rivers Trust's map showing the ecological health of every English rivers:
<https://storymaps.arcgis.com/collections/6730f10b64184200b171a57750890643?item=3>

| Classification Item | 2019 |
|--|-------------------------|
| Ecological | Moderate |
| Biological quality elements | Good |
| Invertebrates | Good |
| Macrophytes and Phytobenthos Combined | |
| Macrophytes Sub Element | Moderate |
| Physico-chemical quality elements | High |
| Acid Neutralising Capacity | High |
| Ammonia (Phys-Chem) | High |
| Dissolved oxygen | High |
| Phosphate | High |
| Temperature | High |
| pH | High |
| Supporting elements (Surface Water) | Moderate |
| Mitigation Measures Assessment | Moderate or less |
| Specific pollutants | High |
| 2,4-dichlorophenoxyacetic acid | High |
| Arsenic | High |
| Copper | High |
| Iron | High |
| Manganese | High |
| Zinc | High |

| Chemical | Fail |
|---------------------------------------|-------------|
| Priority hazardous substances | Fail |
| Benzo(a)pyrene | Good |
| Cadmium and Its Compounds | Good |
| Dioxins and dioxin-like compounds | Good |
| Heptachlor and cis-Heptachlor epoxide | Good |
| Hexabromocyclododecane (HBCDD) | Good |
| Hexachlorobenzene | Good |
| Hexachlorobutadiene | Good |
| Mercury and Its Compounds | Fail |
| Perfluorooctane sulphonate (PFOS) | Fail |
| Polybrominated diphenyl ethers (PBDE) | Fail |
| Priority substances | Good |
| Cypermethrin (Priority) | Good |
| Fluoranthene | Good |
| Lead and Its Compounds | Good |
| Nickel and Its Compounds | Good |
| Other Pollutants | Good |
| Aldrin, Dieldrin, Endrin & Isodrin | Good |
| para - para DDT | Good |

| | |
|------------------------------------|-----------------|
| Classification Item | 2019 |
| Ecological | Moderate |
| Biological quality elements | Good |
| Invertebrates | Good |

| | |
|------------------------------------|-------------|
| Other Pollutants | Good |
| Aldrin, Dieldrin, Endrin & Isodrin | Good |
| para - para DDT | Good |

Viewing latest data (Updated on 22 August 2022). [Switch to river basin management plan data](#)

Samples from 1 Dec 2021 to 1 Jun 2023

| Notation | Determinand | Units | 1 Dec 2021 10:11 | 7 Jan 2022 09:48 | 1 Feb 2022 11:07 | 2 Mar 2022 12:17 | 7 Apr 2022 09:37 | 9 May 2022 10:18 | 1 Mar 2023 09:39 | 20 Apr 2023 12:07 | 3 May 2023 11:06 | 1 Jun 2023 12:46 |
|----------|----------------------|-------|---------------------|---------------------|---------------------|---------------------|---------------------|---------------------|---------------------|----------------------|---------------------|---------------------|
| 0052 | Lead, Dissolved | µg/l | 0.73 | 0.51 | 0.5 | 0.52 | 0.78 | 0.3 | | 1.3 | 0.44 | 0.19 |
| 0061 | pH | | 7.57 | 7.8 | 7.86 | 7.57 | 7.62 | 8.07 | 7.66 | 7.7 | 7.8 | 8.11 |
| 0076 | Temperature of Water | °C | 6.3 | 3.2 | 4.6 | 4.5 | 8 | 13.2 | 5.6 | 9.3 | 11.1 | 15.7 |



Environment

Raw sewage floods UK rivers with faecal bacteria after heavy rainfall

Water samples from the river Ouseburn in Newcastle show high levels of faecal bacteria caused by raw sewage

By [Jason Arunn Murugesu](#)

9 June 2023



PRODUCTS ▾

WHAT'S NEW

SUPPORT ▾

VIDEOS

WHERE TO BUY

ABOUT US ▾

Home > Total Coliform Test Kit



Total Coliform Test Kit

SKU#: 5850

An easy-to-use, disposable tube method that indicates the presence of Total Coliform Bacteria in recreational water.

Price on Request

• Sign up to River Action UK's mailing list and sign their petition (<https://riveractionuk.com/>)

• Follow The Telegraph's Clean Rivers Campaign (<https://www.telegraph.co.uk/clean-rivers-campaign/>)

• Join Surfers Against Sewage, donate to them and sign up to their newsletter (<https://www.sas.org.uk/>)

• Donate to the Rivers Trust, explore the website and sign up to their newsletter (<https://theriverstrust.org/>)

• Tell your MP - that water companies should be required to disclose the volume of discharges as well as the duration

- that Northumbrian Water is obliged to publish near real-time spillage data, but isn't yet doing so
- that if Northumbrian Water published rainfall data alongside this it would show if spillages are legal
- that the Environment Agency needs to be far more generously funded
- that the regulator (Ofwat) needs to be given stronger powers over the water companies
- that the water companies must invest far more in infrastructure without passing the bill to customers

• **BUT.. In October 2021 your MP voted against an amendment to the Environment Bill that would have required water companies to "take all reasonable steps to ensure that untreated sewage isn't discharged from storm overflows"**

• Invite Northumbrian Water's Pollution Manager to a parish council meeting

• Help Tyne Rivers Trust with their water quality monitoring and/or their river fly monitoring

• Push for Bathing Water Status for the North Tyne at Chollerford